

Product datasheet

# Anti-Plasminogen antibody - C-terminal ab85234

1 Image

Overview

<b>Product name</b>	Anti-Plasminogen antibody - C-terminal
<b>Description</b>	Rabbit polyclonal to Plasminogen - C-terminal
<b>Host species</b>	Rabbit
<b>Tested applications</b>	<b>Suitable for:</b> WB, ELISA
<b>Species reactivity</b>	<b>Reacts with:</b> Human
<b>Immunogen</b>	Synthetic peptide selected from the C terminal region of Human Plasminogen, conjugated to KLH
<b>Positive control</b>	Lysate from K562 cells.

Properties

<b>Form</b>	Liquid
<b>Storage instructions</b>	Shipped at 4°C. Upon delivery aliquot and store at -20°C or -80°C. Avoid repeated freeze / thaw cycles.
<b>Storage buffer</b>	Preservative: 0.09% Sodium Azide Constituents: PBS
<b>Purity</b>	Ammonium Sulphate Precipitation
<b>Purification notes</b>	Prepared by Saturated Ammonium Sulphate (SAS) precipitation followed by dialysis against PBS.
<b>Clonality</b>	Polyclonal
<b>Isotype</b>	IgG

Applications

Our [Abpromise guarantee](#) covers the use of **ab85234** in the following tested applications.

The application notes include recommended starting dilutions; optimal dilutions/concentrations should be determined by the end user.

Application	Abreviews	Notes
WB		1/50 - 1/100. Predicted molecular weight: 91 kDa.

Application	Abreviews	Notes
ELISA		1/1000.

## Target

### Function

Plasmin dissolves the fibrin of blood clots and acts as a proteolytic factor in a variety of other processes including embryonic development, tissue remodeling, tumor invasion, and inflammation. In ovulation, weakens the walls of the Graafian follicle. It activates the urokinase-type plasminogen activator, collagenases and several complement zymogens, such as C1 and C5. Cleavage of fibronectin and laminin leads to cell detachment and apoptosis. Also cleaves fibrin, thrombospondin and von Willebrand factor. Its role in tissue remodeling and tumor invasion may be modulated by CSPG4. Binds to cells.

Angiostatin is an angiogenesis inhibitor that blocks neovascularization and growth of experimental primary and metastatic tumors in vivo.

### Tissue specificity

Present in plasma and many other extracellular fluids. It is synthesized in the liver.

### Involvement in disease

Defects in PLG are a cause of susceptibility to thrombosis (THR) [MIM:188050]. It is a multifactorial disorder of hemostasis characterized by abnormal platelet aggregation in response to various agents and recurrent thrombi formation.

Defects in PLG are the cause of plasminogen deficiency (PLGD) [MIM:217090]. PLGD is characterized by decreased serum plasminogen activity. Two forms of the disorder are distinguished: type 1 deficiency is additionally characterized by decreased plasminogen antigen levels and clinical symptoms, whereas type 2 deficiency, also known as dysplasminogenemia, is characterized by normal, or slightly reduced antigen levels, and absence of clinical manifestations. Plasminogen deficiency type 1 results in markedly impaired extracellular fibrinolysis and chronic mucosal pseudomembranous lesions due to subepithelial fibrin deposition and inflammation. The most common clinical manifestation of type 1 deficiency is ligneous conjunctivitis in which pseudomembranes formation on the palpebral surfaces of the eye progresses to white, yellow-white, or red thick masses with a wood-like consistency that replace the normal mucosa.

### Sequence similarities

Belongs to the peptidase S1 family. Plasminogen subfamily.

Contains 5 kringle domains.

Contains 1 PAN domain.

Contains 1 peptidase S1 domain.

### Domain

Kringle domains mediate interaction with CSPG4.

### Post-translational modifications

N-linked glycan contains N-acetylglucosamine and sialic acid. O-linked glycans consist of Gal-GalNAc disaccharide modified with up to 2 sialic acid residues (microheterogeneity).

In the presence of the inhibitor, the activation involves only cleavage after Arg-580, yielding two chains held together by two disulfide bonds. In the absence of the inhibitor, the activation involves additionally the removal of the activation peptide.

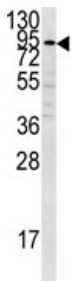
### Cellular localization

Secreted. Locates to the cell surface where it is proteolytically cleaved to produce the active plasmin. Interaction with HRG tethers it to the cell surface.

### Form

Cleaved into the following 5 chains: 1.Plasmin heavy chain A2.Activation peptide3.Angiostatin4.Plasmin heavy chain A, short form5. Plasmin light chain B

## Images



Anti-Plasminogen antibody - C-terminal  
(ab85234) at 1/50 dilution + K562 cell lysate  
at 35 µg

**Predicted band size:** 91 kDa

**Observed band size:** 91 kDa

Western blot - Anti-Plasminogen antibody - C-terminal (ab85234)

**Please note:** All products are "FOR RESEARCH USE ONLY AND ARE NOT INTENDED FOR DIAGNOSTIC OR THERAPEUTIC USE"

### Our Abpromise to you: Quality guaranteed and expert technical support

- Replacement or refund for products not performing as stated on the datasheet
- Valid for 12 months from date of delivery
- Response to your inquiry within 24 hours
- We provide support in Chinese, English, French, German, Japanese and Spanish
- Extensive multi-media technical resources to help you
- We investigate all quality concerns to ensure our products perform to the highest standards

If the product does not perform as described on this datasheet, we will offer a refund or replacement. For full details of the Abpromise, please visit <https://www.abcam.com/abpromise> or contact our technical team.

### Terms and conditions

- Guarantee only valid for products bought direct from Abcam or one of our authorized distributors