

Product datasheet

Anti-AFF2 antibody ab85450

1 Image

Overview

Product name	Anti-AFF2 antibody
Description	Rabbit polyclonal to AFF2
Host species	Rabbit
Tested applications	Suitable for: WB
Species reactivity	Reacts with: Human Predicted to work with: Mouse, Rat, Rabbit, Horse, Chicken, Guinea pig, Cow, Cat, Dog, Chimpanzee
Immunogen	Synthetic peptide corresponding to a region within the internal amino acids 1224-1273 (AMGNCNNGPV TIPQRIHHMA ASHVNITSNV LRGYEHWDMA DKLTRENKEF) of Human AFF2 (NP_002016). Run BLAST with ExPASy Run BLAST with NCBI
Positive control	Human fetal lung lysate.

Properties

Form	Liquid
Storage instructions	Shipped at 4°C. Upon delivery aliquot and store at -20°C. Avoid repeated freeze / thaw cycles.
Storage buffer	Preservative: 0.09% Sodium azide Constituents: PBS, 2% Sucrose
Purity	Immunogen affinity purified
Clonality	Polyclonal
Isotype	IgG

Applications

Our [Abpromise guarantee](#) covers the use of **ab85450** in the following tested applications.

The application notes include recommended starting dilutions; optimal dilutions/concentrations should be determined by the end user.

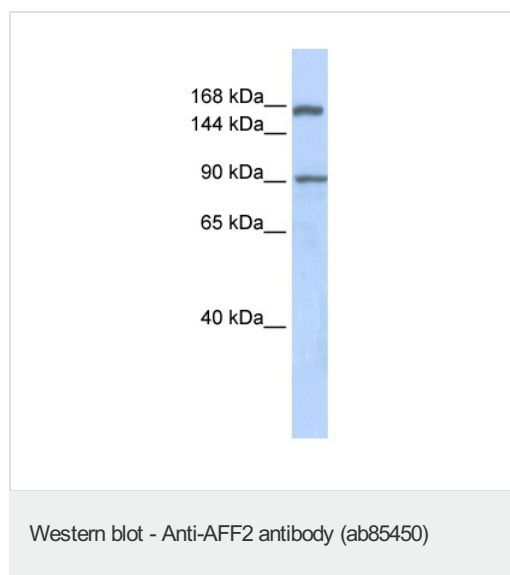
Application	Abreviews	Notes
-------------	-----------	-------

Application	Abreviews	Notes
WB		Use a concentration of 1 µg/ml. Detects a band of approximately 160 kDa (predicted molecular weight: 145 kDa). Good results were obtained when blocked with 5% non-fat dry milk in 0.05% PBS-T.

Target

Function	RNA-binding protein. Might be involved in alternative splicing regulation through an interaction with G-quartet RNA structure.
Tissue specificity	Brain (most abundant in hippocampus and amygdala), placenta and lung.
Involvement in disease	Mental retardation, X-linked, associated with fragile site FRAXE
Sequence similarities	Belongs to the AF4 family.
Cellular localization	Nucleus speckle. When splicing is inhibited, accumulates in enlarged speckles.

Images



Anti-AFF2 antibody (ab85450) at 1 µg/ml (in 5% skim milk / PBS buffer) + human fetal lung lysate at 10 µg

Secondary

HRP conjugated anti-Rabbit IgG at 1/50000 dilution

Predicted band size: 145 kDa

Observed band size: ~160 kDa

[why is the actual band size different from the predicted?](#)

Additional bands at: ~90 kDa. We are unsure as to the identity of these extra bands.

P6%-18% gel

Please note: All products are "FOR RESEARCH USE ONLY AND ARE NOT INTENDED FOR DIAGNOSTIC OR THERAPEUTIC USE"

Our Abpromise to you: Quality guaranteed and expert technical support

- Replacement or refund for products not performing as stated on the datasheet
- Valid for 12 months from date of delivery
- Response to your inquiry within 24 hours
- We provide support in Chinese, English, French, German, Japanese and Spanish
- Extensive multi-media technical resources to help you
- We investigate all quality concerns to ensure our products perform to the highest standards

If the product does not perform as described on this datasheet, we will offer a refund or replacement. For full details of the Abpromise, please visit <https://www.abcam.com/abpromise> or contact our technical team.

Terms and conditions

- Guarantee only valid for products bought direct from Abcam or one of our authorized distributors