

## Product datasheet

# Anti-DDX43 antibody ab86596

[1 References](#) [2 Images](#)

### Overview

<b>Product name</b>	Anti-DDX43 antibody
<b>Description</b>	Rabbit polyclonal to DDX43
<b>Host species</b>	Rabbit
<b>Tested applications</b>	<b>Suitable for:</b> WB, IP
<b>Species reactivity</b>	<b>Reacts with:</b> Human <b>Predicted to work with:</b> Chimpanzee, Gorilla, Orangutan
<b>Immunogen</b>	Synthetic peptide corresponding to a region within the amino acids 125-175 (KAVIDNFVKK LEENYNSECG IDTAFQPSVG KDGSTDNNVV AGDRPLIDWD Q) of Human DDX43, Swiss Prot Q9NXZ2. <a href="#">Run BLAST with ExPASy</a> <a href="#">Run BLAST with NCBI</a>
<b>Positive control</b>	Whole cell lysate from HeLa cells.

### Properties

<b>Form</b>	Liquid
<b>Storage instructions</b>	Shipped at 4°C. Upon delivery aliquot and store at -20°C. Avoid freeze / thaw cycles.
<b>Storage buffer</b>	Preservative: 0.09% Sodium Azide Constituents: Tris buffered saline, pH 7-8
<b>Purity</b>	Immunogen affinity purified
<b>Clonality</b>	Polyclonal
<b>Isotype</b>	IgG

### Applications

Our [Abpromise guarantee](#) covers the use of **ab86596** in the following tested applications.

The application notes include recommended starting dilutions; optimal dilutions/concentrations should be determined by the end user.

Application	Abreviews	Notes
WB		1/1000 - 1/5000. Detects a band of approximately 71 kDa (predicted molecular weight: 73 kDa).

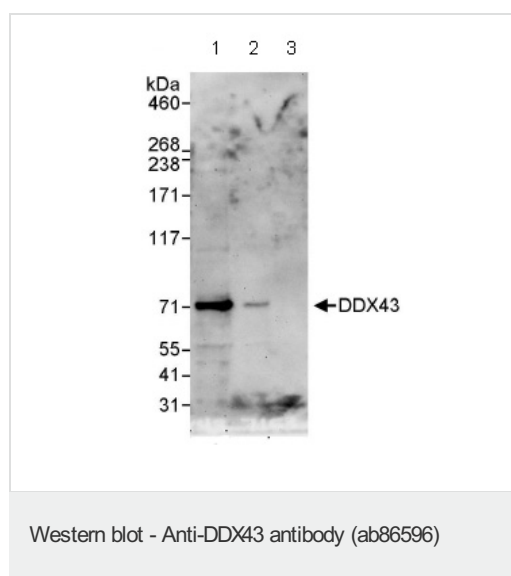
Application	Abreviews	Notes
IP		Use at 10 µg/mg of lysate.

## Target

**Tissue specificity** Expressed in testis. Expressed in many tumors of various histological types at a level that is 100-fold higher than the level observed in normal tissues except testis.

**Sequence similarities** Belongs to the DEAD box helicase family.  
Contains 1 helicase ATP-binding domain.  
Contains 1 helicase C-terminal domain.  
Contains 1 KH domain.

## Images



**All lanes :** Anti-DDX43 antibody (ab86596) at 0.4 µg/ml

**Lane 1 :** Whole cell lysate from HeLa cells at 50 µg

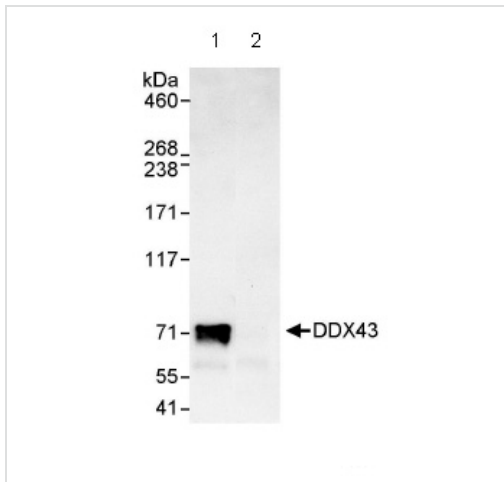
**Lane 2 :** Whole cell lysate from HeLa cells at 15 µg

**Lane 3 :** Whole cell lysate from HeLa cells at 5 µg

**Predicted band size:** 73 kDa

**Observed band size:** 71 kDa

**Exposure time:** 3 minutes



Immunoprecipitation - Anti-DDX43 antibody  
(ab86596)

Immunoprecipitation/ Western Blot of  
ab86596

Lane 1: ab86596 at 10µg/mg whole cell  
lysate.

Lane 2: Control IgG.

ab86596 at 1µg/ml for WB.

Whole cell lysate from HeLa cells at 1mg for IP,  
20% of IP loaded.

Chemiluminescence with an exposure time of  
30 seconds.

**Please note:** All products are "FOR RESEARCH USE ONLY AND ARE NOT INTENDED FOR DIAGNOSTIC OR THERAPEUTIC USE"

**Our Abpromise to you: Quality guaranteed and expert technical support**

- Replacement or refund for products not performing as stated on the datasheet
- Valid for 12 months from date of delivery
- Response to your inquiry within 24 hours
- We provide support in Chinese, English, French, German, Japanese and Spanish
- Extensive multi-media technical resources to help you
- We investigate all quality concerns to ensure our products perform to the highest standards

If the product does not perform as described on this datasheet, we will offer a refund or replacement. For full details of the Abpromise, please visit <https://www.abcam.com/abpromise> or contact our technical team.

**Terms and conditions**

- Guarantee only valid for products bought direct from Abcam or one of our authorized distributors