

Product datasheet

Anti-PANDER antibody ab88142

[3 Images](#)

Overview

Product name	Anti-PANDER antibody
Description	Mouse monoclonal to PANDER
Host species	Mouse
Tested applications	Suitable for: WB, ELISA
Species reactivity	Reacts with: Human
Immunogen	Recombinant full length Human protein (AAH57829), with a proprietary tag

Positive control

[Purchase matching WB positive control:
Recombinant Human PANDER protein >](#)

Human kidney tissue lysate; FAM3B-transfected 293T cell lysate.

Properties

Form	Liquid
Storage instructions	Shipped at 4°C. Upon delivery aliquot and store at -20°C or -80°C. Avoid repeated freeze / thaw cycles.
Storage buffer	Preservative: None Constituents: PBS, pH 7.2
Purity	Protein A purified
Clonality	Monoclonal
Isotype	IgG1
Light chain type	kappa

Applications

Our [Abpromise guarantee](#) covers the use of **ab88142** in the following tested applications.

The application notes include recommended starting dilutions; optimal dilutions/concentrations should be determined by the end user.

Application	Abreviews	Notes
WB		Use a concentration of 1 - 5 µg/ml. Predicted molecular weight: 26 kDa.

Application	Abreviews	Notes
ELISA		Use at an assay dependent dilution.

Target

Function Induces apoptosis of alpha and beta cells in a dose- and time-dependent manner. Present in insulin secretory granules and likely cosecreted with insulin.

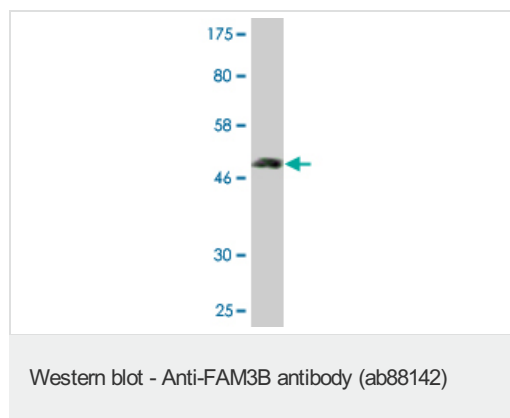
Tissue specificity Highly expressed in the pancreas. Also found in the colon, kidney, prostate, small intestine and testis.

Sequence similarities Belongs to the FAM3 family.

Post-translational modifications 2 N-termini have been observed in the mature protein: the first at Glu-30, resulting from signal peptide cleavage, the second at Ser-46.

Cellular localization Secreted. Localized in discrete vesicular and perinuclear structure.

Images

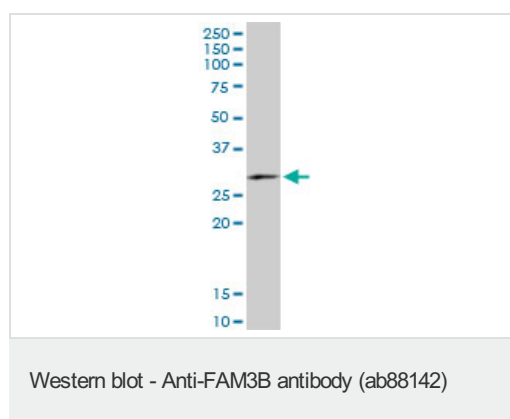


Anti-PANDER antibody (ab88142) at 1 µg/ml + immunogen (recombinant full length protein with proprietary tag of 26kDa) at 0.2 µg

Secondary

Goat anti-Mouse IgG at 1/5000 dilution

Predicted band size: 26 kDa

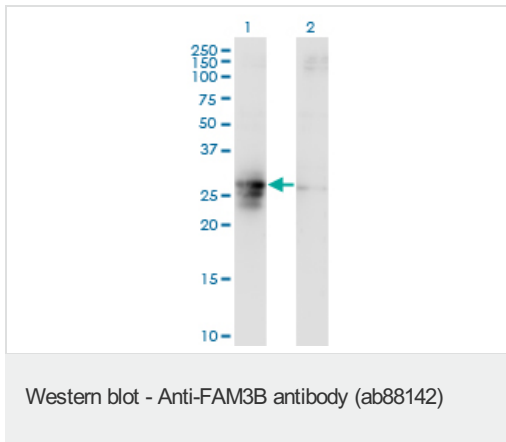


Anti-PANDER antibody (ab88142) at 5 µg/ml + Human kidney tissue lysate at 25 µg

Secondary

Goat anti-Mouse IgG at 1/2500 dilution

Predicted band size: 26 kDa



All lanes : Anti-PANDER antibody (ab88142) at 5 µg/ml

Lane 1 : FAM3B-transfected 293T cell lysate

Lane 2 : Non-transfected 293T cell lysate

Lysates/proteins at 25 µg per lane.

Secondary

Lane 1 : Goat anti-Mouse IgG at 1/2500 dilution

Lane 2 : Goat anti-Mouse IgG at 1/2500 dilution

Predicted band size: 26 kDa

Please note: All products are "FOR RESEARCH USE ONLY AND ARE NOT INTENDED FOR DIAGNOSTIC OR THERAPEUTIC USE"

Our Abpromise to you: Quality guaranteed and expert technical support

- Replacement or refund for products not performing as stated on the datasheet
- Valid for 12 months from date of delivery
- Response to your inquiry within 24 hours
- We provide support in Chinese, English, French, German, Japanese and Spanish
- Extensive multi-media technical resources to help you
- We investigate all quality concerns to ensure our products perform to the highest standards

If the product does not perform as described on this datasheet, we will offer a refund or replacement. For full details of the Abpromise, please visit <https://www.abcam.com/abpromise> or contact our technical team.

Terms and conditions

- Guarantee only valid for products bought direct from Abcam or one of our authorized distributors