

Product datasheet

Anti-NAP1L1 antibody ab88580

[3 Images](#)

Overview

Product name	Anti-NAP1L1 antibody
Description	Mouse polyclonal to NAP1L1
Host species	Mouse
Tested applications	Suitable for: WB, ICC/IF
Species reactivity	Reacts with: Human
Immunogen	Full length Human NAP1L1 (NP_004528.1, 1-391aa).
Positive control	NAP1L1 transfected 293T cell lysate, HeLa cells and cell lysate.

Properties

Form	Liquid
Storage instructions	Shipped at 4°C. Upon delivery aliquot and store at -20°C or -80°C. Avoid repeated freeze / thaw cycles.
Storage buffer	Preservative: None Constituents: 1X PBS, pH 7.2
Purity	Protein A purified
Clonality	Polyclonal
Isotype	IgG

Applications

Our [Abpromise guarantee](#) covers the use of **ab88580** in the following tested applications.

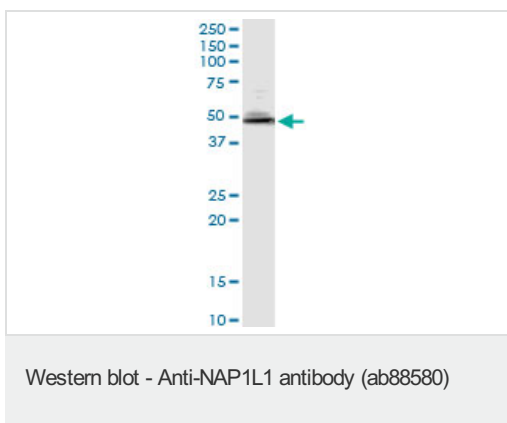
The application notes include recommended starting dilutions; optimal dilutions/concentrations should be determined by the end user.

Application	Abreviews	Notes
WB		Use a concentration of 1 µg/ml. Predicted molecular weight: 45 kDa.
ICC/IF		Use a concentration of 10 µg/ml.

Target

Function	May be involved in modulating chromatin formation and contribute to regulation of cell proliferation.
Tissue specificity	Ubiquitously expressed.
Sequence similarities	Belongs to the nucleosome assembly protein (NAP) family.
Domain	The acidic domains are probably involved in the interaction with histones.
Post-translational modifications	Polyglutamylated by TTL4, a modification that occurs exclusively on glutamate residues and results in polyglutamate chains on the gamma-carboxyl group. Some residues may also be monoglycylated but not polyglycylated due to the absence of functional TTL10 in human.
Cellular localization	Nucleus. Melanosome. Identified by mass spectrometry in melanosome fractions from stage I to stage IV.

Images

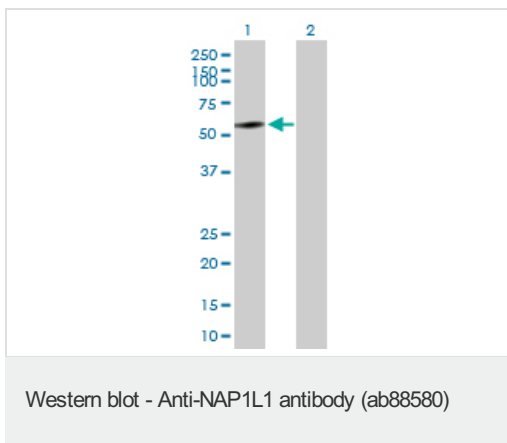


Anti-NAP1L1 antibody (ab88580) at 1 µg/ml + HeLa cell lysate at 50 µg

Predicted band size: 45 kDa

Observed band size: 48 kDa

[why is the actual band size different from the predicted?](#)



All lanes : Anti-NAP1L1 antibody (ab88580) at 1 µg/ml

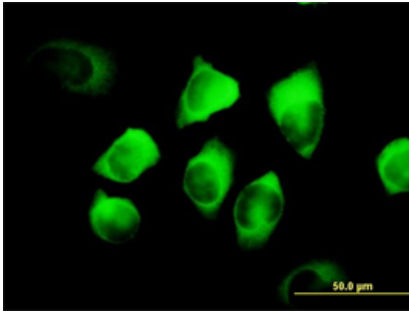
Lane 1 : NAP1L1 transfected 293T cell lysate

Lane 2 : Non-transfected 293T cell lysate

Lysates/proteins at 25 µg per lane.

Predicted band size: 45 kDa

Observed band size: 55 kDa [why is the actual band size different from the predicted?](#)



ab88580 at 10 μ g/ml staining NAP1L1 in HeLa cells by Immunofluorescence.

Immunocytochemistry/ Immunofluorescence - Anti-NAP1L1 antibody (ab88580)

Please note: All products are "FOR RESEARCH USE ONLY AND ARE NOT INTENDED FOR DIAGNOSTIC OR THERAPEUTIC USE"

Our Abpromise to you: Quality guaranteed and expert technical support

- Replacement or refund for products not performing as stated on the datasheet
- Valid for 12 months from date of delivery
- Response to your inquiry within 24 hours
- We provide support in Chinese, English, French, German, Japanese and Spanish
- Extensive multi-media technical resources to help you
- We investigate all quality concerns to ensure our products perform to the highest standards

If the product does not perform as described on this datasheet, we will offer a refund or replacement. For full details of the Abpromise, please visit <https://www.abcam.com/abpromise> or contact our technical team.

Terms and conditions

- Guarantee only valid for products bought direct from Abcam or one of our authorized distributors