

Product datasheet

Anti-Phosphoglucomutase 5 antibody ab88781

[2 Images](#)

Overview

Product name	Anti-Phosphoglucomutase 5 antibody
Description	Mouse polyclonal to Phosphoglucomutase 5
Host species	Mouse
Tested applications	Suitable for: WB
Species reactivity	Reacts with: Human
Immunogen	Full length Human protein (ENSP00000366540)
Positive control	Kidney lysate

Properties

Form	Liquid
Storage instructions	Shipped at 4°C. Upon delivery aliquot and store at -20°C or -80°C. Avoid repeated freeze / thaw cycles.
Storage buffer	Preservative: None Constituents: 1X PBS, pH 7.2
Purity	Protein A purified
Clonality	Polyclonal
Isotype	IgG

Applications

Our [Abpromise guarantee](#) covers the use of **ab88781** in the following tested applications.

The application notes include recommended starting dilutions; optimal dilutions/concentrations should be determined by the end user.

Application	Abreviews	Notes
WB		Use a concentration of 1 µg/ml. Predicted molecular weight: 62 kDa.

Target

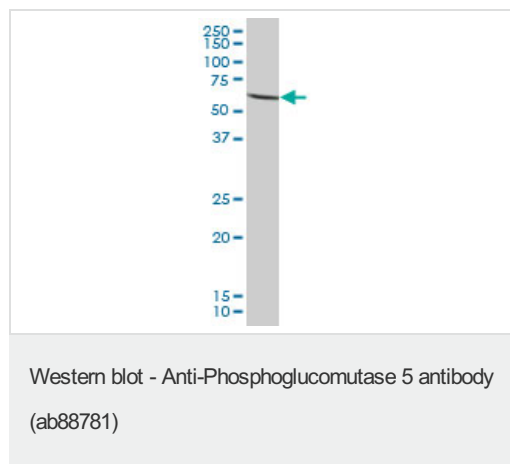
Relevance

Phosphoglucomutase 5 is a phosphotransferase involved in the interconversion of glucose 1 phosphate and glucose 6 phosphate. This activity is essential in formation of carbohydrates from glucose 6 phosphate and in formation of glucose 6 phosphate from galactose and glycogen.

Cellular localization

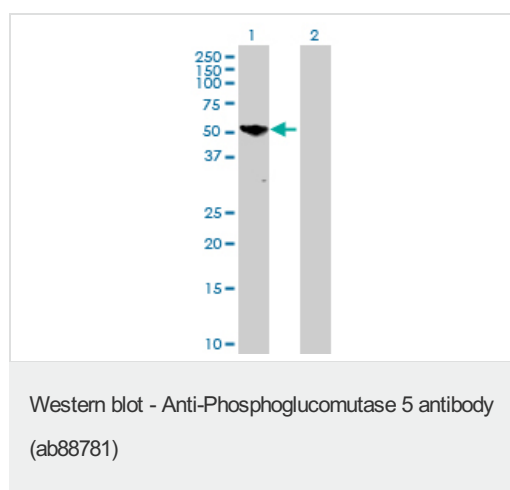
Cell junction, adherens junction.

Images



Anti-Phosphoglucomutase 5 antibody (ab88781) at 1 µg/ml + Human kidney lysate at 50 µg

Predicted band size: 62 kDa



All lanes : Anti-Phosphoglucomutase 5 antibody (ab88781) at 1 µg/ml

Lane 1 : Phosphoglucomutase 5 transfected 293T cell lysate

Lane 2 : untransfected lysate

Lysates/proteins at 25 µg per lane.

Predicted band size: 62 kDa

Observed band size: 55 kDa

Please note: All products are "FOR RESEARCH USE ONLY AND ARE NOT INTENDED FOR DIAGNOSTIC OR THERAPEUTIC USE"

Our Abpromise to you: Quality guaranteed and expert technical support

- Replacement or refund for products not performing as stated on the datasheet
- Valid for 12 months from date of delivery
- Response to your inquiry within 24 hours
- We provide support in Chinese, English, French, German, Japanese and Spanish
- Extensive multi-media technical resources to help you
- We investigate all quality concerns to ensure our products perform to the highest standards

If the product does not perform as described on this datasheet, we will offer a refund or replacement. For full details of the Abpromise,

please visit <https://www.abcam.com/abpromise> or contact our technical team.

Terms and conditions

- Guarantee only valid for products bought direct from Abcam or one of our authorized distributors