

Product datasheet

Anti-SLC27A5 / BAL antibody ab89008

[2 References](#) [2 Images](#)

Overview

Product name	Anti-SLC27A5 / BAL antibody
Description	Mouse polyclonal to SLC27A5 / BAL
Host species	Mouse
Tested applications	Suitable for: WB
Species reactivity	Reacts with: Human
Immunogen	Full length Human SLC27A5 (AA48808.1)
Positive control	Human liver tissue lysate and SLC27A5 transfected 293T cell lysate.

Properties

Form	Liquid
Storage instructions	Shipped at 4°C. Upon delivery aliquot and store at -20°C or -80°C. Avoid repeated freeze / thaw cycles.
Storage buffer	Preservative: None Constituents: PBS, pH 7.2
Purity	Protein A purified
Clonality	Polyclonal
Isotype	IgG

Applications

Our [Abpromise guarantee](#) covers the use of **ab89008** in the following tested applications.

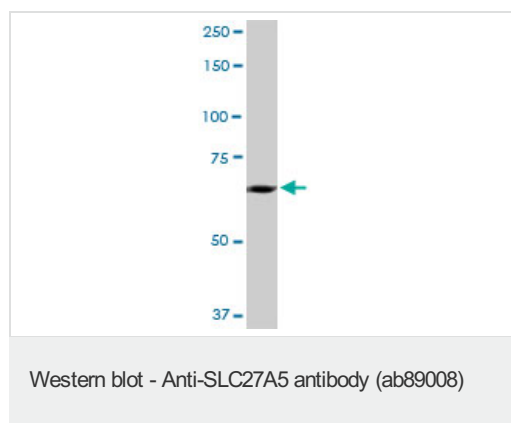
The application notes include recommended starting dilutions; optimal dilutions/concentrations should be determined by the end user.

Application	Abreviews	Notes
WB		1/500 - 1/1000. Predicted molecular weight: 75 kDa.

Target

Function	Acyl-CoA synthetase involved in bile acid metabolism. Proposed to catalyze the first step in the conjugation of C24 bile acids (choloneates) to glycine and taurine before excretion into bile canaliculi by activating them to their CoA thioesters. Seems to activate secondary bile acids entering the liver from the enterohepatic circulation. In vitro, also activates 3-alpha,7-alpha,12-alpha-trihydroxy-5-beta-cholestanate (THCA), the C27 precursor of cholic acid deriving from the de novo synthesis from cholesterol.
Tissue specificity	Predominantly expressed in liver.
Sequence similarities	Belongs to the ATP-dependent AMP-binding enzyme family.
Cellular localization	Endoplasmic reticulum membrane.

Images

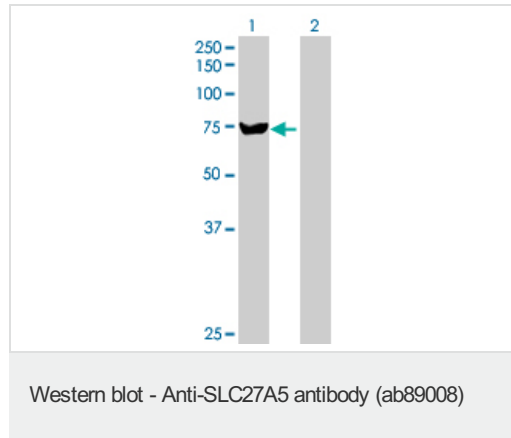


Anti-SLC27A5 / BAL antibody (ab89008) at 1/500 dilution + Human liver tissue lysate at 50 µg

Predicted band size: 75 kDa

Observed band size: 68 kDa

[why is the actual band size different from the predicted?](#)



All lanes : Anti-SLC27A5 / BAL antibody (ab89008) at 1/500 dilution

Lane 1 : SLC27A5 transfected 293T cell lysate

Lane 2 : Non-transfected 293T cell lysate

Lysates/proteins at 25 µg per lane.

Predicted band size: 75 kDa

Observed band size: 75 kDa

Please note: All products are "FOR RESEARCH USE ONLY AND ARE NOT INTENDED FOR DIAGNOSTIC OR THERAPEUTIC USE"

Our Abpromise to you: Quality guaranteed and expert technical support

- Replacement or refund for products not performing as stated on the datasheet
- Valid for 12 months from date of delivery
- Response to your inquiry within 24 hours
- We provide support in Chinese, English, French, German, Japanese and Spanish
- Extensive multi-media technical resources to help you

- We investigate all quality concerns to ensure our products perform to the highest standards

If the product does not perform as described on this datasheet, we will offer a refund or replacement. For full details of the Abpromise, please visit <https://www.abcam.com/abpromise> or contact our technical team.

Terms and conditions

- Guarantee only valid for products bought direct from Abcam or one of our authorized distributors