

Product datasheet

# Anti-S100 Calcium Binding Protein A13 antibody ab89074

[2 Images](#)

Overview

<b>Product name</b>	Anti-S100 Calcium Binding Protein A13 antibody
<b>Description</b>	Mouse polyclonal to S100 Calcium Binding Protein A13
<b>Host species</b>	Mouse
<b>Tested applications</b>	<b>Suitable for:</b> WB, ICC/IF
<b>Species reactivity</b>	<b>Reacts with:</b> Human
<b>Immunogen</b>	Full length Human S100 Calcium Binding Protein A13 protein, amino acids 1-98 (NP_001019381.1)
<b>Positive control</b>	HepG2 cell lysate, S100 Calcium Binding Protein A13 transfected 293T cell lysate and HeLa cells.

Properties

<b>Form</b>	Liquid
<b>Storage instructions</b>	Shipped at 4°C. Upon delivery aliquot and store at -20°C or -80°C. Avoid repeated freeze / thaw cycles.
<b>Storage buffer</b>	Preservative: None Constituents: Whole serum
<b>Purity</b>	Whole antiserum
<b>Clonality</b>	Polyclonal
<b>Isotype</b>	IgG

Applications

Our [Abpromise guarantee](#) covers the use of **ab89074** in the following tested applications.

The application notes include recommended starting dilutions; optimal dilutions/concentrations should be determined by the end user.

Application	Abreviews	Notes
WB		1/500 - 1/1000. Predicted molecular weight: 11 kDa.

Application	Abreviews	Notes
ICC/IF		Use at an assay dependent concentration.

## Target

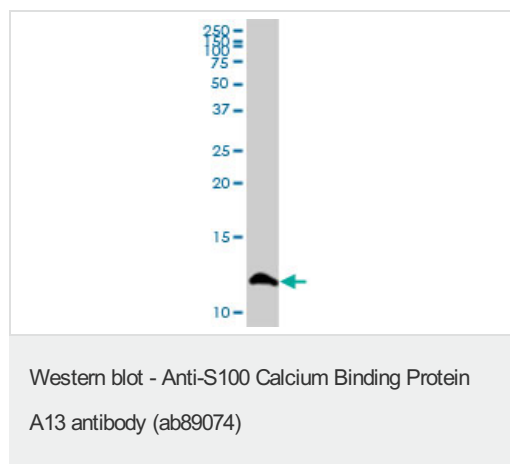
**Function** Plays a role in the export of proteins that lack a signal peptide and are secreted by an alternative pathway. Binds two calcium ions per subunit. Binds one copper ion. Binding of one copper ion does not interfere with calcium binding. Required for the copper-dependent stress-induced export of IL1A and FGF1. The calcium-free protein binds to lipid vesicles containing phosphatidylserine, but not to vesicles containing phosphatidylcholine.

**Tissue specificity** Expressed in heart and skeletal muscle.

**Sequence similarities** Belongs to the S-100 family.  
Contains 2 EF-hand domains.

**Cellular localization** Cytoplasm. Secreted. Secretion is mediated by exposure to stress and requires copper ions.

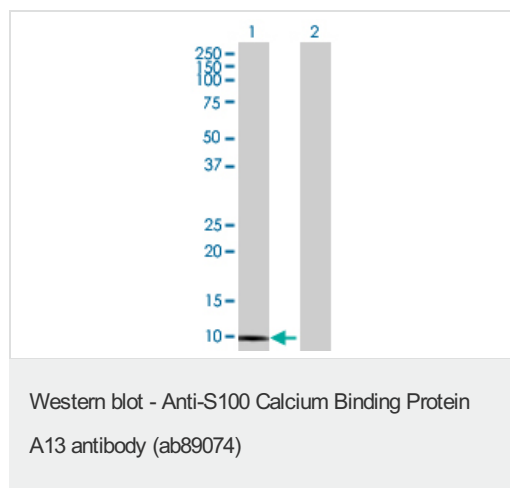
## Images



Anti-S100 Calcium Binding Protein A13 antibody (ab89074) at 1/500 dilution + HepG2 cell lysate at 50 µg

**Predicted band size:** 11 kDa

**Observed band size:** 11 kDa



**All lanes :** Anti-S100 Calcium Binding Protein A13 antibody (ab89074) at 1/500 dilution

**Lane 1 :** S100 Calcium Binding Protein A13 transfected 293T cell lysate

**Lane 2 :** Non-transfected lysate

Lysates/proteins at 25 µg per lane.

**Predicted band size:** 11 kDa

**Observed band size:** 11 kDa

### **Our Abpromise to you: Quality guaranteed and expert technical support**

---

- Replacement or refund for products not performing as stated on the datasheet
- Valid for 12 months from date of delivery
- Response to your inquiry within 24 hours
  
- We provide support in Chinese, English, French, German, Japanese and Spanish
- Extensive multi-media technical resources to help you
- We investigate all quality concerns to ensure our products perform to the highest standards

If the product does not perform as described on this datasheet, we will offer a refund or replacement. For full details of the Abpromise, please visit <https://www.abcam.com/abpromise> or contact our technical team.

### **Terms and conditions**

---

- Guarantee only valid for products bought direct from Abcam or one of our authorized distributors