


## Product datasheet

# Anti-VEGF Receptor 3 antibody ab89501

[1 References](#)   [3 Images](#)

### Overview

<b>Product name</b>	Anti-VEGF Receptor 3 antibody
<b>Description</b>	Mouse monoclonal to VEGF Receptor 3
<b>Host species</b>	Mouse
<b>Tested applications</b>	<b>Suitable for:</b> WB, ELISA
<b>Species reactivity</b>	<b>Reacts with:</b> Human <b>Predicted to work with:</b> Rhesus monkey 
<b>Immunogen</b>	Recombinant fragment: ITEESHVIDT GDSLSISCRG QHPLEWAWPG AQEAPATGDK DSEDTGIVRD CEGTDARPYC KVLLLHEVHA NDTGSYVCYYKYIKARIEGT TAASSYVFVR, corresponding to amino acids 34-133 of Human VEGF Receptor 3 (NP_002011) with a proprietary tag. <a href="#">Run BLAST with ExPASy</a> <a href="#">Run BLAST with NCBI</a>
<b>Positive control</b>	MES-SA/Dx5 cell lysate. Partial tagged recombinant Human VEGF Receptor 3 (Immunogen).

### Properties

<b>Form</b>	Liquid
<b>Storage instructions</b>	Shipped at 4°C. Upon delivery aliquot and store at -20°C or -80°C. Avoid repeated freeze / thaw cycles.
<b>Storage buffer</b>	Preservative: None Constituents: 1X PBS, pH 7.2
<b>Purity</b>	Protein A purified
<b>Clonality</b>	Monoclonal
<b>Isotype</b>	IgG2a
<b>Light chain type</b>	kappa

### Applications

Our [Abpromise guarantee](#) covers the use of **ab89501** in the following tested applications.

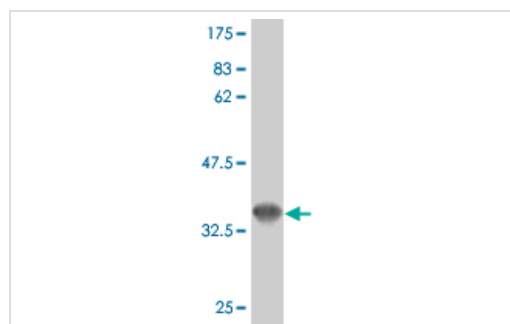
The application notes include recommended starting dilutions; optimal dilutions/concentrations should be determined by the end user.

Application	Abreviews	Notes
WB		Use a concentration of 1 - 5 µg/ml. Predicted molecular weight: 146 kDa.
ELISA		Use at an assay dependent dilution. Detection limit for recombinant tagged VEGF Receptor 3 is approximately 0.3ng/ml when used as a capture antibody.

## Target

<b>Function</b>	Receptor for VEGFC. Has a tyrosine-protein kinase activity.
<b>Tissue specificity</b>	Placenta, lung, heart, and kidney, does not seem to be expressed in pancreas and brain.
<b>Involvement in disease</b>	Defects in FLT4 are the cause of lymphedema hereditary type 1A (LMPH1A) [MIM:153100]; also known as Nonne-Milroy lymphedema or Milroy disease. Hereditary lymphedema is a chronic disabling condition which results in swelling of the extremities due to altered lymphatic flow. Patients with lymphedema suffer from recurrent local infections and physical impairment. Note=Defects in FLT4 are found in juvenile hemangioma. Juvenile hemangiomas are the most common tumors of infancy, occurring as many as 10% of all births. These benign vascular lesions enlarge rapidly during the first year of life by hyperplasia of endothelial cells and attendant pericytes, and then spontaneously involute over a period of years, leaving loose fibrofatty tissue.
<b>Sequence similarities</b>	Belongs to the protein kinase superfamily. Tyr protein kinase family. CSF-1/PDGF receptor subfamily. Contains 7 Ig-like C2-type (immunoglobulin-like) domains. Contains 1 protein kinase domain.
<b>Cellular localization</b>	Membrane.

## Images



Western blot - Anti-VEGF Receptor 3 antibody (ab89501)

Anti-VEGF Receptor 3 antibody (ab89501) at 5 µg/ml + Partial tagged recombinant Human VEGF Receptor 3 protein at 0.2 µg

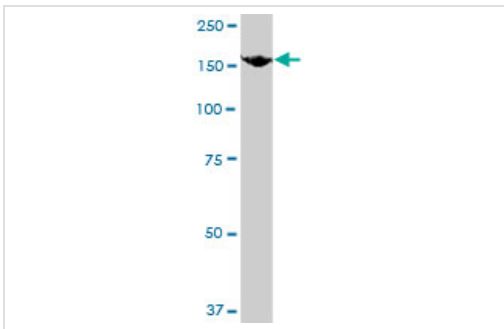
**Predicted band size:** 146 kDa

**Observed band size:** 37 kDa

[why is the actual band size different from the predicted?](#)

Western blot against tagged recombinant protein immunogen.

Predicted band size of immunogen is 37 kDa.

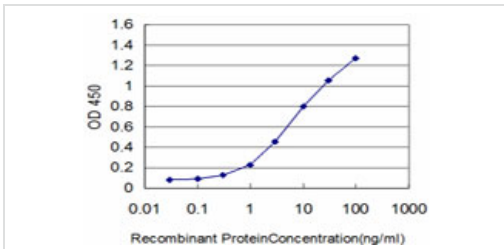


Western blot - Anti-VEGF Receptor 3 antibody (ab89501)

Anti-VEGF Receptor 3 antibody (ab89501) at 5 µg/ml + MES-SA/Dx5 cell lysate at 50 µg

**Predicted band size:** 146 kDa

**Observed band size:** 155 kDa *why is the actual band size different from the predicted?*



ELISA - Anti-VEGF Receptor 3 antibody (ab89501)

Detection limit for recombinant tagged VEGF Receptor 3 is approximately 0.3ng/ml as a capture antibody.

**Please note:** All products are "FOR RESEARCH USE ONLY AND ARE NOT INTENDED FOR DIAGNOSTIC OR THERAPEUTIC USE"

### Our Abpromise to you: Quality guaranteed and expert technical support

- Replacement or refund for products not performing as stated on the datasheet
- Valid for 12 months from date of delivery
- Response to your inquiry within 24 hours
- We provide support in Chinese, English, French, German, Japanese and Spanish
- Extensive multi-media technical resources to help you
- We investigate all quality concerns to ensure our products perform to the highest standards

If the product does not perform as described on this datasheet, we will offer a refund or replacement. For full details of the Abpromise, please visit <https://www.abcam.com/abpromise> or contact our technical team.

### Terms and conditions

- Guarantee only valid for products bought direct from Abcam or one of our authorized distributors