

Product datasheet

Anti-Procalcitonin antibody [13F2] ab90489

1 Image

Overview

Product name	Anti-Procalcitonin antibody [13F2]
Description	Mouse monoclonal [13F2] to Procalcitonin
Host species	Mouse
Specificity	It recognises calcitonin and procalcitonin
Tested applications	Suitable for: WB, ELISA, Sandwich ELISA
Species reactivity	Reacts with: Human
Immunogen	Human Calcitonin conjugated with carrier protein

Properties

Form	Liquid
Storage instructions	Shipped at 4°C. Store at +4°C.
Storage buffer	Preservative: 0.1% Sodium Azide Constituents: PBS, pH 7.4
Purity	Protein A purified
Purification notes	ab90489 was purified by Protein A chromatography from ascites and is >90% pure as assessed by SDS-PAGE
Clonality	Monoclonal
Clone number	13F2
Myeloma	Sp2/0
Isotype	IgG1

Applications

Our [Abpromise guarantee](#) covers the use of **ab90489** in the following tested applications.

The application notes include recommended starting dilutions; optimal dilutions/concentrations should be determined by the end user.

Application	Abreviews	Notes
WB		Use a concentration of 1 µg/ml. Predicted molecular weight: 13 kDa.

Application	Abreviews	Notes
ELISA		Use at an assay dependent dilution.
Sandwich ELISA		Use at an assay dependent dilution.

Target

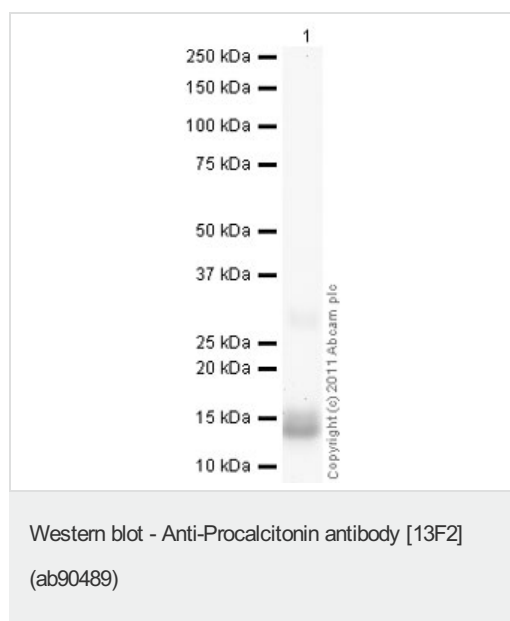
Relevance

Procalcitonin (PCT) is a 116 amino acid residue peptide with molecular weight of about 13 kDa. PCT itself has no known hormonal activity. PCT belongs to a group of related proteins including calcitonin gene-related peptides I and II, amylin, adrenomedullin and calcitonin (CAPA peptide family). PCT, like other peptides of CAPA family, appears from the common precursor pre-procalcitonin consisting of 141 amino acids by removal of 25 amino acids from the N-terminus. PCT undergoes successive cleavages to form three molecules: N-terminal fragment (55 a.a.), calcitonin (32 a.a.) and katalcacin (21 a.a.). Under normal metabolic conditions, PCT is only present in the C cells of the thyroid gland. In bacterial infection and sepsis, however, intact PCT is found in the blood and, more importantly, its level is related to the severity of bacterial sepsis. Today, PCT is considered to be one of the earliest and most specific markers of sepsis.

Cellular localization

Secreted

Images



Anti-Procalcitonin antibody [13F2] (ab90489)
 at 1 µg/ml + Recombinant human
 Procalcitonin protein (ab92843) at 0.1 µg

Secondary

Goat Anti-Mouse IgG H&L (HRP)
 preadsorbed (ab97040) at 1/5000 dilution

Developed using the ECL technique.

Performed under reducing conditions.

Predicted band size: 13 kDa

Exposure time: 3 minutes

Please note: All products are "FOR RESEARCH USE ONLY AND ARE NOT INTENDED FOR DIAGNOSTIC OR THERAPEUTIC USE"

Our Abpromise to you: Quality guaranteed and expert technical support

- Replacement or refund for products not performing as stated on the datasheet

- Valid for 12 months from date of delivery
- Response to your inquiry within 24 hours

- We provide support in Chinese, English, French, German, Japanese and Spanish
- Extensive multi-media technical resources to help you
- We investigate all quality concerns to ensure our products perform to the highest standards

If the product does not perform as described on this datasheet, we will offer a refund or replacement. For full details of the Abpromise, please visit <https://www.abcam.com/abpromise> or contact our technical team.

Terms and conditions

- Guarantee only valid for products bought direct from Abcam or one of our authorized distributors