


Product datasheet

Anti-EFTUD2 antibody ab92479

[2 Images](#)

Overview

Product name	Anti-EFTUD2 antibody
Description	Rabbit polyclonal to EFTUD2
Host species	Rabbit
Tested applications	Suitable for: WB, ELISA, IHC-P
Species reactivity	Reacts with: Human Predicted to work with: Mouse 
Immunogen	Synthetic peptide derived from internal region of human EFTUD2.
Positive control	HUVEC and 293 cells

Properties

Form	Liquid
Storage instructions	Shipped at 4°C. Upon delivery aliquot and store at -20°C. Avoid freeze / thaw cycles.
Storage buffer	Preservative: 0.02% Sodium Azide Constituents: 50% Glycerol, PBS, 150mM Sodium chloride, pH 7.4
Purity	Immunogen affinity purified
Clonality	Polyclonal
Isotype	IgG

Applications

Our [Abpromise guarantee](#) covers the use of **ab92479** in the following tested applications.

The application notes include recommended starting dilutions; optimal dilutions/concentrations should be determined by the end user.

Application	Abreviews	Notes
WB		
ELISA		
IHC-P		

Application notes

ELISA: 1/40,000.

IHC-P: 1/50 - 1/100.

WB: 1/500 - 1/1000. Predicted molecular weight: 109 kDa.

Not yet tested in other applications.

Optimal dilutions/concentrations should be determined by the end user.

Target

Function

Component of the U5 snRNP complex required for pre-mRNA splicing. Binds GTP.

Involvement in disease

Defects in EFTUD2 are the cause of mandibulofacial dysostosis with microcephaly (MFDM) [MIM:610536]. A rare syndrome characterized by progressive microcephaly, midface and malar hypoplasia, micrognathia, microtia, dysplastic ears, preauricular skin tags, significant developmental delay, and speech delay. Many patients have major sequelae, including choanal atresia that results in respiratory difficulties, conductive hearing loss, and cleft palate.

Sequence similarities

Belongs to the GTP-binding elongation factor family. EF-G/EF-2 subfamily.

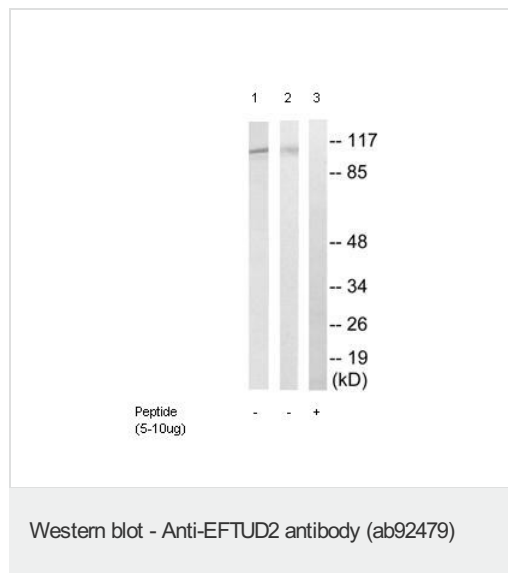
Post-translational modifications

Phosphorylated upon DNA damage, probably by ATM or ATR.

Cellular localization

Nucleus.

Images



All lanes : Anti-EFTUD2 antibody (ab92479) at 1/500 dilution

Lane 1 : HUVEC cells

(-peptide)

Lane 2 : 293 cells

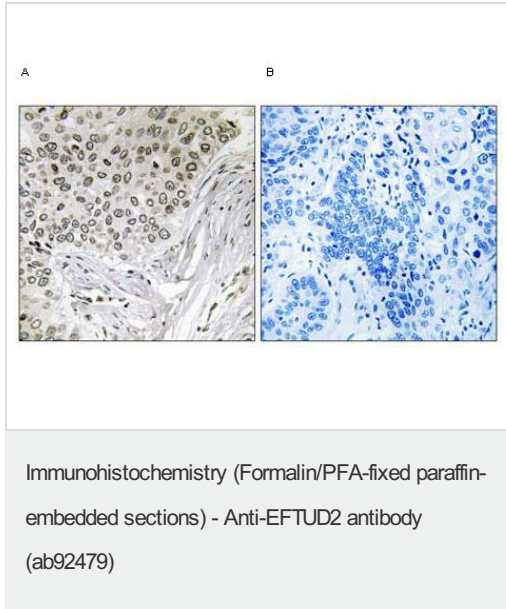
(-peptide)

Lane 3 : HUVEC cells

(+peptide)

Lysates/proteins at 30 µg per lane.

Predicted band size: 109 kDa



Immunohistochemistry analysis of paraffin-embedded human lung carcinoma tissue, using ab92479 A) - peptide B) + peptide

Please note: All products are "FOR RESEARCH USE ONLY AND ARE NOT INTENDED FOR DIAGNOSTIC OR THERAPEUTIC USE"

Our Abpromise to you: Quality guaranteed and expert technical support

- Replacement or refund for products not performing as stated on the datasheet
- Valid for 12 months from date of delivery
- Response to your inquiry within 24 hours
- We provide support in Chinese, English, French, German, Japanese and Spanish
- Extensive multi-media technical resources to help you
- We investigate all quality concerns to ensure our products perform to the highest standards

If the product does not perform as described on this datasheet, we will offer a refund or replacement. For full details of the Abpromise, please visit <https://www.abcam.com/abpromise> or contact our technical team.

Terms and conditions

- Guarantee only valid for products bought direct from Abcam or one of our authorized distributors