

## Product datasheet

# Anti-IKK alpha + IKK beta antibody ab92886

[1 Abreviews](#) [1 Image](#)

### Overview

<b>Product name</b>	Anti-IKK alpha + IKK beta antibody
<b>Description</b>	Rabbit polyclonal to IKK alpha + IKK beta
<b>Host species</b>	Rabbit
<b>Tested applications</b>	<b>Suitable for:</b> WB
<b>Species reactivity</b>	<b>Reacts with:</b> Mouse, Human
<b>Immunogen</b>	Synthetic peptide (Human)
<b>Positive control</b>	293 cell lysate

### Properties

<b>Form</b>	Liquid
<b>Storage instructions</b>	Store at -80°C.
<b>Storage buffer</b>	Preservative: 0.02% Sodium Azide Constituents: 50% Glycerol, PBS, pH 7.4
<b>Purity</b>	Protein A purified
<b>Clonality</b>	Polyclonal
<b>Isotype</b>	IgG

### Applications

Our [Abpromise guarantee](#) covers the use of **ab92886** in the following tested applications.

The application notes include recommended starting dilutions; optimal dilutions/concentrations should be determined by the end user.

Application	Abreviews	Notes
WB		

<b>Application notes</b>	WB: 1/1000. Predicted molecular weight: 85kDa (alpha) and 87kDa (beta).
	Not yet tested in other applications. Optimal dilutions/concentrations should be determined by the end user.

## Target

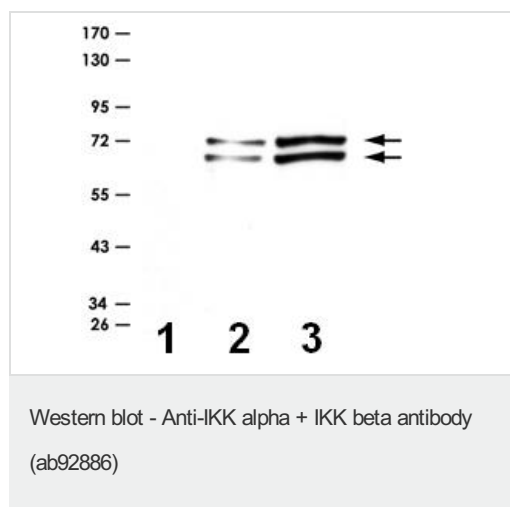
### Relevance

IKK is a serine protein kinase, and the IKK complex contains alpha and beta subunits (IKK alpha and IKK beta). IKK alpha and IKK beta interact with each other and both are essential for NFkB activation.

### Cellular localization

Cytoplasmic and Nuclear; Membrane raft. Note: IKK beta is colocalized with DPP4 in membrane rafts.

## Images



**All lanes :** Anti-IKK alpha + IKK beta antibody (ab92886) at 1/1000 dilution

**Lane 1 :** 293 cell lysate at 3 µg

**Lane 2 :** 293 cell lysate at 10 µg

**Lane 3 :** 293 cell lysate at 30 µg

**Predicted band size:** 85 , 87 kDa

**Please note:** All products are "FOR RESEARCH USE ONLY AND ARE NOT INTENDED FOR DIAGNOSTIC OR THERAPEUTIC USE"

## Our Abpromise to you: Quality guaranteed and expert technical support

- Replacement or refund for products not performing as stated on the datasheet
- Valid for 12 months from date of delivery
- Response to your inquiry within 24 hours
- We provide support in Chinese, English, French, German, Japanese and Spanish
- Extensive multi-media technical resources to help you
- We investigate all quality concerns to ensure our products perform to the highest standards

If the product does not perform as described on this datasheet, we will offer a refund or replacement. For full details of the Abpromise, please visit <https://www.abcam.com/abpromise> or contact our technical team.

## Terms and conditions

- Guarantee only valid for products bought direct from Abcam or one of our authorized distributors