


Product datasheet

Anti-Prostaglandin E Receptor EP1 antibody ab93479

1 References 1 Image

Overview

Product name	Anti-Prostaglandin E Receptor EP1 antibody
Description	Rabbit polyclonal to Prostaglandin E Receptor EP1
Host species	Rabbit
Tested applications	Suitable for: WB
Species reactivity	Reacts with: Mouse, Human Predicted to work with: Rat 
Immunogen	Synthetic peptide derived from Human Prostaglandin E Receptor EP1.
Positive control	IM-9 and THP1 cell lysates

Properties

Form	Liquid
Storage instructions	Shipped at 4°C. Store at -20°C. Stable for 12 months at -20°C.
Storage buffer	Preservative: 0.02% Sodium Azide Constituents: PBS, pH 7.4
Purity	Immunogen affinity purified
Clonality	Polyclonal
Isotype	IgG

Applications

Our [Abpromise guarantee](#) covers the use of **ab93479** in the following tested applications.

The application notes include recommended starting dilutions; optimal dilutions/concentrations should be determined by the end user.

Application	Abreviews	Notes
-------------	-----------	-------

WB

Application notes	WB: 1/1000 - 1/4000. Detects a band of approximately 38 kDa (predicted molecular weight: 42 kDa).
--------------------------	---

Not yet tested in other applications.

Optimal dilutions/concentrations should be determined by the end user.

Target

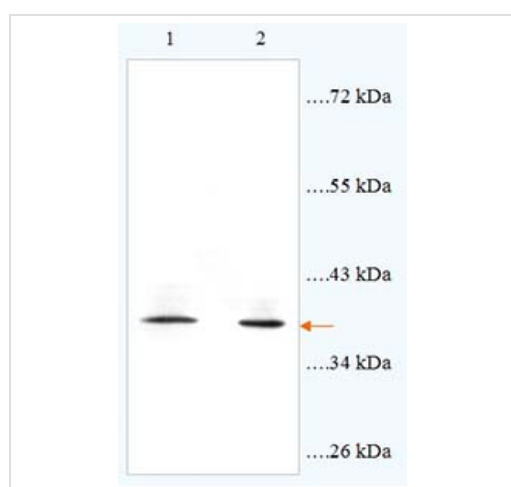
Relevance

PTGER1 is a subtype 1 receptor for prostaglandin E2 (PGE2). This receptor is coupled to the phosphatidylinositol-calcium second messenger system by G(q) proteins. PTGER1 may be an important modulator of renal function and is implicated in the smooth muscle contractile response to PGE2 in various tissues.

Cellular localization

Cell Membrane; multi-pass membrane protein.

Images



All lanes : Anti-Prostaglandin E Receptor EP1 antibody (ab93479) at 1/2000 dilution

Lane 1 : IM-9 cell lysate at 28 µg

Lane 2 : THP1 cell lysate at 52 µg

Predicted band size: 42 kDa

Observed band size: 38 kDa

Western blot - Anti-Prostaglandin E Receptor EP1 antibody (ab93479)

Please note: All products are "FOR RESEARCH USE ONLY AND ARE NOT INTENDED FOR DIAGNOSTIC OR THERAPEUTIC USE"

Our Abpromise to you: Quality guaranteed and expert technical support

- Replacement or refund for products not performing as stated on the datasheet
- Valid for 12 months from date of delivery
- Response to your inquiry within 24 hours
- We provide support in Chinese, English, French, German, Japanese and Spanish
- Extensive multi-media technical resources to help you
- We investigate all quality concerns to ensure our products perform to the highest standards

If the product does not perform as described on this datasheet, we will offer a refund or replacement. For full details of the Abpromise, please visit <https://www.abcam.com/abpromise> or contact our technical team.

Terms and conditions

- Guarantee only valid for products bought direct from Abcam or one of our authorized distributors