

## Product datasheet

# Anti-MTMR12 antibody ab94444

1 Image

### Overview

|                            |  |
|----------------------------|--|
| <b>Product name</b>        | Anti-MTMR12 antibody   |
| <b>Description</b>         | Rabbit polyclonal to MTMR12  |
| <b>Host species</b>        | Rabbit   |
| <b>Tested applications</b> | <b>Suitable for:</b> WB  |
| <b>Species reactivity</b>  | <b>Reacts with:</b> Human<br><b>Predicted to work with:</b> Mouse, Rat, Rabbit, Horse, Chicken, Guinea pig, Cow, Cat, Dog, Zebrafish   |
| <b>Immunogen</b>           | Synthetic peptide corresponding to a region within internal sequence amino acids 540 - 589 (LYVEKPKLDKQGQRKGMRFKHQRQLSLPLTQSKSSPKRGFFREEDHLIK N) of Human MTMR12 (NP_001035536)<br><a href="#">Run BLAST with</a> <a href="#">Run BLAST with</a> |
| <b>Positive control</b>    | COLO205 cell lysate  |

### Properties

|                             |  |
|-----------------------------|--|
| <b>Form</b>                 | Liquid   |
| <b>Storage instructions</b> | Shipped at 4°C. Upon delivery aliquot and store at -20°C. Avoid repeated freeze / thaw cycles. |
| <b>Storage buffer</b>       | Preservative: None<br>Constituents: 2% Sucrose, PBS  |
| <b>Purity</b>               | Immunogen affinity purified  |
| <b>Clonality</b>            | Polyclonal   |
| <b>Isotype</b>              | IgG  |

### Applications

Our [Abpromise guarantee](#) covers the use of **ab94444** in the following tested applications.

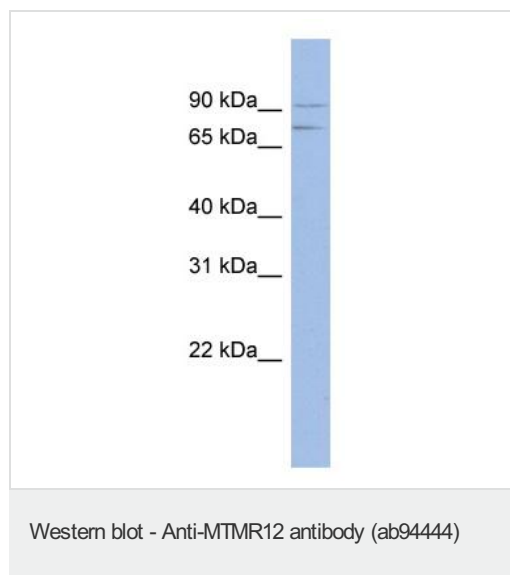
The application notes include recommended starting dilutions; optimal dilutions/concentrations should be determined by the end user.

| Application | Abreviews | Notes  |
|-------------|-----------|--|
| WB          |           | Use a concentration of 1 µg/ml. Predicted molecular weight: 86 kDa. Good results were obtained when blocked with 5% non-fat dry milk in 0.05% PBS-T. |

## Target

|                              |  |
|------------------------------|--|
| <b>Function</b>              | Catalytically inactive phosphatase that plays a role as an adapter for the phosphatase myotubularin to regulate myotubularin intracellular location. |
| <b>Tissue specificity</b>    | Ubiquitous with prominent expression in brain, heart, kidney, placenta, and lung.  |
| <b>Sequence similarities</b> | Belongs to the protein-tyrosine phosphatase family. Non-receptor class myotubularin subfamily. Contains 1 myotubularin phosphatase domain.           |
| <b>Cellular localization</b> | Cytoplasm. Localizes to punctate vesicles when associated with MTM1.   |

## Images



Anti-MTMR12 antibody (ab94444) at 1 µg/ml  
(in 5% skim milk / PBS buffer) + COLO205  
cell lysate at 10 µg

### Secondary

HRP conjugated anti-Rabbit IgG at 1/50000  
dilution

**Predicted band size:** 86 kDa

Gel concentration: 12%

**Please note:** All products are "FOR RESEARCH USE ONLY AND ARE NOT INTENDED FOR DIAGNOSTIC OR THERAPEUTIC USE"

## Our Abpromise to you: Quality guaranteed and expert technical support

- Replacement or refund for products not performing as stated on the datasheet
- Valid for 12 months from date of delivery
- Response to your inquiry within 24 hours
- We provide support in Chinese, English, French, German, Japanese and Spanish
- Extensive multi-media technical resources to help you
- We investigate all quality concerns to ensure our products perform to the highest standards

If the product does not perform as described on this datasheet, we will offer a refund or replacement. For full details of the Abpromise, please visit <https://www.abcam.com/abpromise> or contact our technical team.

## Terms and conditions

---

- Guarantee only valid for products bought direct from Abcam or one of our authorized distributors