

Product datasheet

Anti-PGM1 antibody ab94601

[1 References](#) [2 Images](#)

Overview

Product name	Anti-PGM1 antibody
Description	Rabbit polyclonal to PGM1
Host species	Rabbit
Tested applications	Suitable for: ICC/IF, WB
Species reactivity	Reacts with: Human Predicted to work with: Mouse, Rat, Rabbit, Horse, Chicken, Guinea pig, Cow, Cat, Dog, Pig, Zebrafish
Immunogen	Synthetic peptide corresponding to a region within internal sequence amino acids 513-562 (TIRLYDSYE KDVAKINQDP QVMLAPLISI ALKVSQLQER TGRTAPTIVIT) of Human PGM1 (NP_002624). Run BLAST with ExPASy Run BLAST with NCBI
Positive control	Hela cell lysate

Properties

Form	Liquid
Storage instructions	Shipped at 4°C. Upon delivery aliquot and store at -20°C. Avoid repeated freeze / thaw cycles.
Storage buffer	Preservative: 0.09% Sodium azide Constituents: 2% Sucrose, PBS
Purity	Immunogen affinity purified
Clonality	Polyclonal
Isotype	IgG

Applications

Our [Abpromise guarantee](#) covers the use of **ab94601** in the following tested applications.

The application notes include recommended starting dilutions; optimal dilutions/concentrations should be determined by the end user.

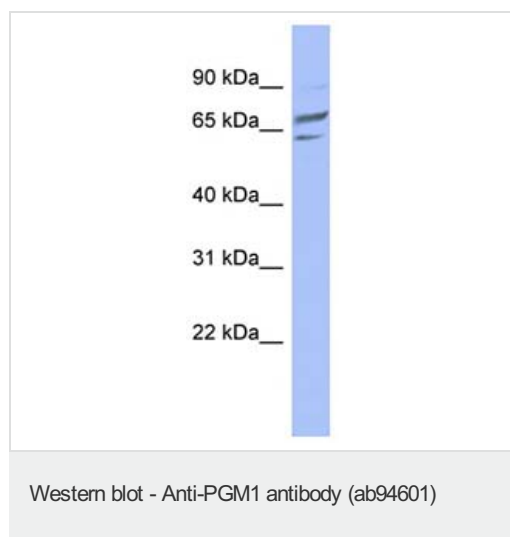
Application	Abreviews	Notes
ICC/IF		Use a concentration of 5 µg/ml.

Application	Abreviews	Notes
WB		Use a concentration of 1 µg/ml. Predicted molecular weight: 61 kDa. Good results were obtained when blocked with 5% non-fat dry milk in 0.05% PBS-T.

Target

Function	This enzyme participates in both the breakdown and synthesis of glucose.
Involvement in disease	Defects in PGM1 are the cause of glycogen storage disease type 14 (GSD14) [MIM:612934]. A metabolic disorder resulting in a myopathy characterized by exercise-induced intolerance with episodes of rhabdomyolysis, normal elevation of lactate, and hyperammonemia on a forearm-exercise test.
Sequence similarities	Belongs to the phosphohexose mutase family.
Cellular localization	Cytoplasm.

Images



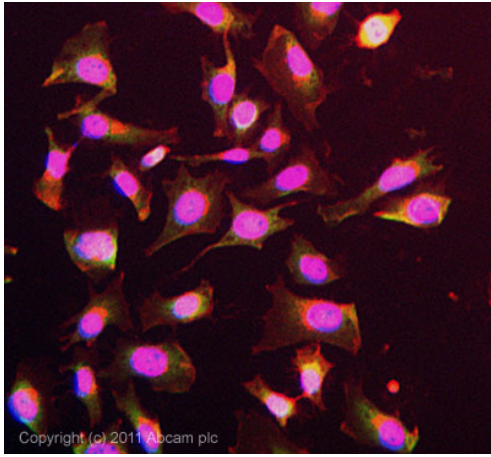
Anti-PGM1 antibody (ab94601) at 1 µg/ml (in 5% skim milk / PBS buffer) + Hela cell lysate at 10 µg

Secondary

HRP conjugated anti-Rabbit IgG at 1/50000 dilution

Predicted band size: 61 kDa

Gel concentration: 12%



Copyright (c) 2011 Abcam plc

Immunocytochemistry/ Immunofluorescence - Anti-PGM1 antibody (ab94601)

ICC/IF image of ab94601 stained HeLa cells. The cells were 4% formaldehyde fixed (10 min) and then incubated in 1%BSA / 10% normal goat serum / 0.3M glycine in 0.1% PBS-Tween for 1h to permeabilise the cells and block non-specific protein-protein interactions. The cells were then incubated with the antibody (ab94601, 5µg/ml) overnight at +4°C. The secondary antibody (green) was ab96899, DyLight® 488 goat anti-rabbit IgG (H+L) used at a 1/250 dilution for 1h. Alexa Fluor® 594 WGA was used to label plasma membranes (red) at a 1/200 dilution for 1h. DAPI was used to stain the cell nuclei (blue) at a concentration of 1.43µM.

Please note: All products are "FOR RESEARCH USE ONLY AND ARE NOT INTENDED FOR DIAGNOSTIC OR THERAPEUTIC USE"

Our Abpromise to you: Quality guaranteed and expert technical support

- Replacement or refund for products not performing as stated on the datasheet
- Valid for 12 months from date of delivery
- Response to your inquiry within 24 hours
- We provide support in Chinese, English, French, German, Japanese and Spanish
- Extensive multi-media technical resources to help you
- We investigate all quality concerns to ensure our products perform to the highest standards

If the product does not perform as described on this datasheet, we will offer a refund or replacement. For full details of the Abpromise, please visit <https://www.abcam.com/abpromise> or contact our technical team.

Terms and conditions

- Guarantee only valid for products bought direct from Abcam or one of our authorized distributors