




Product datasheet

Anti-ERK1 antibody ab95149

1 Image

Overview

Product name	Anti-ERK1 antibody
Description	Rabbit polyclonal to ERK1
Host species	Rabbit
Tested applications	Suitable for: IHC-P
Species reactivity	Reacts with: Human Predicted to work with: Horse, Dog, Chimpanzee, Gorilla, Orangutan 
Immunogen	Synthetic peptide corresponding to Human ERK1 aa 329-379. Sequence: YLEQYYDPTDEPVAEEPFTFAMELDDLPKERLKERLIFQETARFQPGVLEA P Database link: P27361  Run BLAST with  Run BLAST with
Positive control	Human Breast Carcinoma, Colon Carcinoma and Ovarian Carcinoma

Properties

Form	Liquid
Storage instructions	Shipped at 4°C. Upon delivery aliquot and store at -20°C. Avoid freeze / thaw cycles.
Storage buffer	Preservative: 0.09% Sodium Azide Constituents: 0.1% BSA, Tris buffered saline
Purity	Immunogen affinity purified
Clonality	Polyclonal
Isotype	IgG

Applications

Our [Abpromise guarantee](#) covers the use of **ab95149** in the following tested applications.

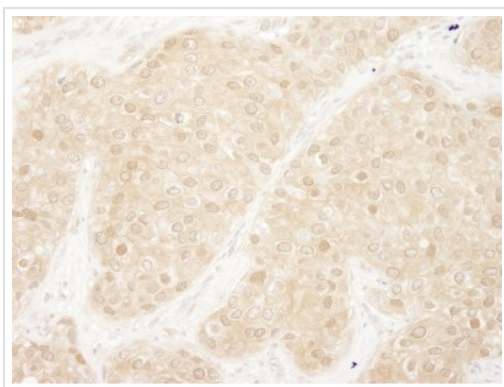
The application notes include recommended starting dilutions; optimal dilutions/concentrations should be determined by the end user.

Application	Abreviews	Notes
IHC-P		1/100 - 1/500. Epitope exposure is recommended. Epitope exposure with citrate buffer will enhance staining.

Target

Function	Involved in both the initiation and regulation of meiosis, mitosis, and postmitotic functions in differentiated cells by phosphorylating a number of transcription factors such as ELK-1. Phosphorylates EIF4EBP1; required for initiation of translation. Phosphorylates microtubule-associated protein 2 (MAP2). Phosphorylates SPZ1 (By similarity). Phosphorylates heat shock factor protein 4 (HSF4).
Sequence similarities	Belongs to the protein kinase superfamily. CMGC Ser/Thr protein kinase family. MAP kinase subfamily. Contains 1 protein kinase domain.
Domain	The TXY motif contains the threonine and tyrosine residues whose phosphorylation activates the MAP kinases.
Post-translational modifications	Dually phosphorylated on Thr-202 and Tyr-204, which activates the enzyme. Dephosphorylated by PTPRJ at Tyr-204.

Images



ab95149, at 1/250 dilution, staining ERK1 in formalin-fixed, paraffin-embedded Human breast carcinoma tissue by Immunohistochemistry using DAB staining.

Immunohistochemistry (Formalin/PFA-fixed paraffin-embedded sections) - Anti-ERK1 antibody (ab95149)

Please note: All products are "FOR RESEARCH USE ONLY AND ARE NOT INTENDED FOR DIAGNOSTIC OR THERAPEUTIC USE"

Our Abpromise to you: Quality guaranteed and expert technical support

- Replacement or refund for products not performing as stated on the datasheet
- Valid for 12 months from date of delivery
- Response to your inquiry within 24 hours
- We provide support in Chinese, English, French, German, Japanese and Spanish

- Extensive multi-media technical resources to help you
- We investigate all quality concerns to ensure our products perform to the highest standards

If the product does not perform as described on this datasheet, we will offer a refund or replacement. For full details of the Abpromise, please visit <https://www.abcam.com/abpromise> or contact our technical team.

Terms and conditions

- Guarantee only valid for products bought direct from Abcam or one of our authorized distributors