


Product datasheet

Anti-SEPT7 antibody ab96127

1 Image

Overview

| | |
|----------------------------|--|
| Product name | Anti-SEPT7 antibody |
| Description | Rabbit polyclonal to SEPT7 |
| Host species | Rabbit |
| Tested applications | Suitable for: WB |
| Species reactivity | Reacts with: Human Predicted to work with: Mouse, Rat, Cow, Zebrafish  |
| Immunogen | Recombinant fragment, corresponding to a region within N-terminal amino acids 1 - 248 of Human SEPT7. |
| Positive control | 293T, H1299, HeLaS3, HepG2, MOLT4 or Raji cell lysate. |

Properties

| | |
|-----------------------------|---|
| Form | Liquid |
| Storage instructions | Shipped at 4°C. Upon delivery aliquot and store at -20°C. Avoid repeated freeze / thaw cycles. |
| Storage buffer | Preservative: 0.01% Thimerosal (merthiolate) Constituents: 10% Glycerol, 0.1M Tris, 0.1M Glycine, pH 7.0 |
| Purity | Immunogen affinity purified |
| Clonality | Polyclonal |
| Isotype | IgG |

Applications

Our [Abpromise guarantee](#) covers the use of **ab96127** in the following tested applications.

The application notes include recommended starting dilutions; optimal dilutions/concentrations should be determined by the end user.

| Application | Abreviews | Notes |
|-------------|-----------|---|
| WB | | 1/500 - 1/3000. Predicted molecular weight: 51 kDa. |

Target

Function

Filament-forming cytoskeletal GTPase. Required for normal organization of the actin cytoskeleton. Required for normal progress through mitosis. Involved in cytokinesis. Required for normal association of CENPE with the kinetochore. Plays a role in ciliogenesis and collective cell movements.

Tissue specificity

Widely expressed.

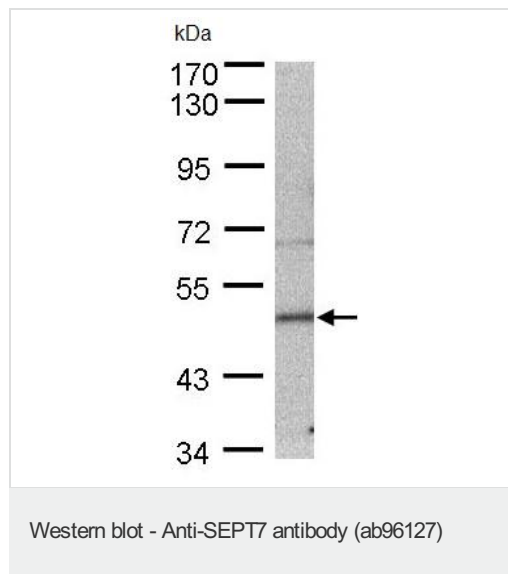
Sequence similarities

Belongs to the septin family.

Cellular localization

Cytoplasm. Chromosome > centromere > kinetochore. Cytoplasm > cytoskeleton > spindle. Cleavage furrow. Midbody. Cytoplasm > cytoskeleton > cilium axoneme. Distributed throughout the cytoplasm in prometaphase cells. Associated with the spindle during metaphase. Associated with the central spindle and at the cleavage furrow in anaphase cells. Detected at the midbody in telophase. Associated with actin stress fibers.

Images



Anti-SEPT7 antibody (ab96127) at 1/500 dilution + MOLT4 whole cell lysate at 30 µg

Predicted band size: 51 kDa

7.5% SDS PAGE

Please note: All products are "FOR RESEARCH USE ONLY AND ARE NOT INTENDED FOR DIAGNOSTIC OR THERAPEUTIC USE"

Our Abpromise to you: Quality guaranteed and expert technical support

- Replacement or refund for products not performing as stated on the datasheet
- Valid for 12 months from date of delivery
- Response to your inquiry within 24 hours
- We provide support in Chinese, English, French, German, Japanese and Spanish
- Extensive multi-media technical resources to help you
- We investigate all quality concerns to ensure our products perform to the highest standards

If the product does not perform as described on this datasheet, we will offer a refund or replacement. For full details of the Abpromise, please visit <https://www.abcam.com/abpromise> or contact our technical team.

Terms and conditions

- Guarantee only valid for products bought direct from Abcam or one of our authorized distributors