


Product datasheet

Anti-NIT1 antibody ab98066

1 Image

Overview

| | |
|----------------------------|---|
| Product name | Anti-NIT1 antibody |
| Description | Rabbit polyclonal to NIT1 |
| Host species | Rabbit |
| Tested applications | Suitable for: WB |
| Species reactivity | Reacts with: Human Predicted to work with: Cow, Cat, Dog, Pig  |
| Immunogen | Synthetic peptide corresponding to a region within N-terminal amino acids 71-120 (VREAARLGACLAFLPEAFDFIARDPAETLHLSEPLGGKLLLEEYQLAREC) of Human NIT1 (NP_005591). Run BLAST with Run BLAST with |
| Positive control | 293T cell lysate. |

Properties

| | |
|-----------------------------|---|
| Form | Liquid |
| Storage instructions | Shipped at 4°C. Upon delivery aliquot and store at -20°C. Avoid freeze / thaw cycles. |
| Storage buffer | Preservative: None Constituents: 2% Sucrose, PBS |
| Purity | Immunogen affinity purified |
| Clonality | Polyclonal |
| Isotype | IgG |

Applications

Our [Abpromise guarantee](#) covers the use of **ab98066** in the following tested applications.

The application notes include recommended starting dilutions; optimal dilutions/concentrations should be determined by the end user.

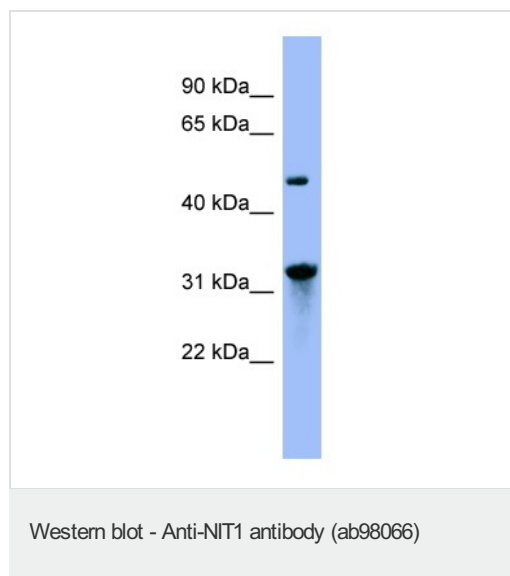
| Application | Abreviews | Notes |
|-------------|-----------|-------|
|-------------|-----------|-------|

| Application | Abreviews | Notes |
|-------------|-----------|--|
| WB | | Use a concentration of 1 µg/ml. Predicted molecular weight: 36 kDa. Good results were obtained when blocked with 5% non-fat dry milk in 0.05% PBS-T. |

Target

| | |
|------------------------------|--|
| Function | Plays a role in cell growth and apoptosis: loss of expression promotes cell growth and resistance to DNA damage stress. Has tumor suppressor properties that enhances the apoptotic responsiveness in cancer cells; this effect is additive to the tumor suppressor activity of FHIT. It is also a negative regulator of primary T-cells. Has apparently no omega-amidase activity such as NIT2. |
| Tissue specificity | Detected in heart, brain, placenta, liver, skeletal muscle, kidney and pancreas. |
| Sequence similarities | Belongs to the carbon-nitrogen hydrolase superfamily. NIT1/NIT2 family. Contains 1 CN hydrolase domain. |
| Cellular localization | Cytoplasm. Mitochondrion. |

Images



Anti-NIT1 antibody (ab98066) at 1 µg/ml (in 5% skim milk / PBS buffer) + 293T Cell Lysate at 10 µg

Secondary

HRP conjugated anti-Rabbit IgG at 1/50000 dilution

Predicted band size: 36 kDa

12% SDS PAGE

Please note: All products are "FOR RESEARCH USE ONLY AND ARE NOT INTENDED FOR DIAGNOSTIC OR THERAPEUTIC USE"

Our Abpromise to you: Quality guaranteed and expert technical support

- Replacement or refund for products not performing as stated on the datasheet
- Valid for 12 months from date of delivery
- Response to your inquiry within 24 hours
- We provide support in Chinese, English, French, German, Japanese and Spanish
- Extensive multi-media technical resources to help you

- We investigate all quality concerns to ensure our products perform to the highest standards

If the product does not perform as described on this datasheet, we will offer a refund or replacement. For full details of the Abpromise, please visit <https://www.abcam.com/abpromise> or contact our technical team.

Terms and conditions

- Guarantee only valid for products bought direct from Abcam or one of our authorized distributors