

Product datasheet

Anti-C22orf28 antibody ab98138

1 Image

Overview

Product name	Anti-C22orf28 antibody
Description	Rabbit polyclonal to C22orf28
Host species	Rabbit
Tested applications	Suitable for: WB
Species reactivity	Reacts with: Human Predicted to work with: Mouse, Rat, Rabbit, Horse, Chicken, Guinea pig, Cow, Cat, Dog, Drosophila melanogaster, Zebrafish
Immunogen	Synthetic peptide corresponding to a region within internal sequence amino acids 359-408 of Human C22orf28 (NP_055121). Run BLAST with ExPASy Run BLAST with NCBI
Positive control	MCF7 cell lysate

Properties

Form	Liquid
Storage instructions	Shipped at 4°C. Upon delivery aliquot and store at -20°C. Avoid repeated freeze / thaw cycles.
Storage buffer	Preservative: None Constituents: 2% Sucrose, PBS
Purity	Immunogen affinity purified
Clonality	Polyclonal
Isotype	IgG

Applications

Our [Abpromise guarantee](#) covers the use of **ab98138** in the following tested applications.

The application notes include recommended starting dilutions; optimal dilutions/concentrations should be determined by the end user.

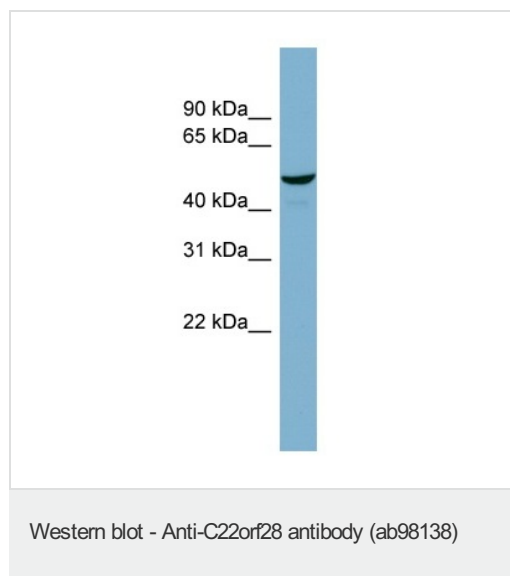
Application	Abreviews	Notes
-------------	-----------	-------

Application	Abreviews	Notes
WB		Use a concentration of 1 µg/ml. Predicted molecular weight: 55 kDa. Optimal concentration of antibody depends the protein level in a given sample. Our recommended concentrations are the starting point for general use. Customers are advised have to do a series of titration tests to determine optimal concentration. Good results were obtained when blocked with 5% non-fat dry milk in 0.05% PBS-T.

Target

Function	Catalytic subunit of the tRNA-splicing ligase complex that acts by directly joining spliced tRNA halves to mature-sized tRNAs by incorporating the precursor-derived splice junction phosphate into the mature tRNA as a canonical 3',5'-phosphodiester. May act as an RNA ligase with broad substrate specificity, and may function toward other RNAs.
Sequence similarities	Belongs to the RtcB family.
Cellular localization	Nucleus. Cytoplasm. Enters into the nucleus in case of active transcription while it accumulates in cytosol when transcription level is low.

Images



Anti-C22orf28 antibody (ab98138) at 1 µg/ml
(in 5% skim milk / PBS buffer) + MCF7 cell
lysate at 10 µg

Secondary

HRP conjugated anti-Rabbit IgG at 1/50000
dilution

Predicted band size: 55 kDa

12% Gel

Please note: All products are "FOR RESEARCH USE ONLY AND ARE NOT INTENDED FOR DIAGNOSTIC OR THERAPEUTIC USE"

Our Abpromise to you: Quality guaranteed and expert technical support

- Replacement or refund for products not performing as stated on the datasheet
- Valid for 12 months from date of delivery
- Response to your inquiry within 24 hours
- We provide support in Chinese, English, French, German, Japanese and Spanish
- Extensive multi-media technical resources to help you
- We investigate all quality concerns to ensure our products perform to the highest standards

If the product does not perform as described on this datasheet, we will offer a refund or replacement. For full details of the Abpromise, please visit <https://www.abcam.com/abpromise> or contact our technical team.

Terms and conditions

- Guarantee only valid for products bought direct from Abcam or one of our authorized distributors