

## Product datasheet

# Anti-RAB27A antibody ab98339

1 Image

### Overview

<b>Product name</b>	Anti-RAB27A antibody
<b>Description</b>	Rabbit polyclonal to RAB27A
<b>Host species</b>	Rabbit
<b>Tested applications</b>	<b>Suitable for:</b> WB
<b>Species reactivity</b>	<b>Reacts with:</b> Human <b>Predicted to work with:</b> Mouse, Rat
<b>Immunogen</b>	Synthetic peptide corresponding to a region within internal sequence amino acids 171-220 (SQAIEMLLDL IMKRMERCVD KSWIPEGVVR SNGHASTDQL SEEKEKGACG) of Human RAB27A (NP_004571). <a href="#">Run BLAST with ExPASy</a> <a href="#">Run BLAST with NCBI</a>
<b>Positive control</b>	Human fetal stomach lysate

### Properties

<b>Form</b>	Liquid
<b>Storage instructions</b>	Shipped at 4°C. Upon delivery aliquot and store at -20°C. Avoid repeated freeze / thaw cycles.
<b>Storage buffer</b>	Preservative: None Constituents: 2% Sucrose, PBS
<b>Purity</b>	Immunogen affinity purified
<b>Clonality</b>	Polyclonal
<b>Isotype</b>	IgG

### Applications

Our [Abpromise guarantee](#) covers the use of **ab98339** in the following tested applications.

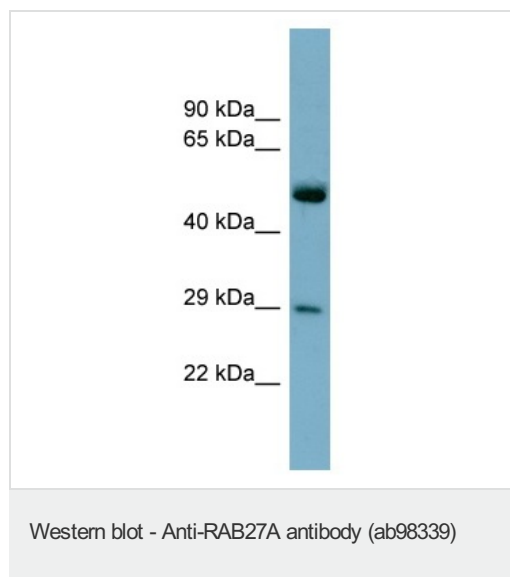
The application notes include recommended starting dilutions; optimal dilutions/concentrations should be determined by the end user.

Application	Abreviews	Notes
WB		Use a concentration of 1 µg/ml. Predicted molecular weight: 25 kDa. Good results were obtained when blocked with 5% non-fat dry milk in 0.05% PBS-T.

## Target

<b>Function</b>	Plays a role in cytotoxic granule exocytosis in lymphocytes. Required for both granule maturation and granule docking and priming at the immunologic synapse.
<b>Tissue specificity</b>	Found in all the examined tissues except in brain. Low expression was found in thymus, kidney, muscle and placenta. Detected in melanocytes, and in most tumor cell lines examined. Expressed in cytotoxic T-lymphocytes (CTL) and mast cells.
<b>Involvement in disease</b>	Defects in RAB27A are a cause of Griscelli syndrome type 2 (GS2) [MIM:607624]. Griscelli syndrome is a rare autosomal recessive disorder that results in pigmentary dilution of the skin and hair, the presence of large clumps of pigment in hair shafts, and an accumulation of melanosomes in melanocytes. GS2 patients also develop an uncontrolled T-lymphocyte and macrophage activation syndrome, known as hemophagocytic syndrome, leading to death in the absence of bone marrow transplantation. Neurological impairment is present in some patients, likely as a result of hemophagocytic syndrome.
<b>Sequence similarities</b>	Belongs to the small GTPase superfamily. Rab family.
<b>Cellular localization</b>	Membrane. Melanosome. Late endosome. Lysosome. Identified by mass spectrometry in melanosome fractions from stage I to stage IV. Localizes to endosomal exocytic vesicles.

## Images



Anti-RAB27A antibody (ab98339) at 1  $\mu$ g/ml +  
Human fetal stomach lysate at 10  $\mu$ g

**Predicted band size:** 25 kDa

Gel concentration: 12%

**Please note:** All products are "FOR RESEARCH USE ONLY AND ARE NOT INTENDED FOR DIAGNOSTIC OR THERAPEUTIC USE"

## Our Abpromise to you: Quality guaranteed and expert technical support

- Replacement or refund for products not performing as stated on the datasheet
- Valid for 12 months from date of delivery
- Response to your inquiry within 24 hours
- We provide support in Chinese, English, French, German, Japanese and Spanish
- Extensive multi-media technical resources to help you

- We investigate all quality concerns to ensure our products perform to the highest standards

If the product does not perform as described on this datasheet, we will offer a refund or replacement. For full details of the Abpromise, please visit <https://www.abcam.com/abpromise> or contact our technical team.

### **Terms and conditions**

---

- Guarantee only valid for products bought direct from Abcam or one of our authorized distributors