

Product datasheet

Anti-EVA1 antibody ab98877

1 Image

Overview

Product name	Anti-EVA1 antibody
Description	Rabbit polyclonal to EVA1
Host species	Rabbit
Tested applications	Suitable for: WB
Species reactivity	Reacts with: Human Predicted to work with: Mouse, Rat, Rabbit, Horse, Guinea pig, Cow, Cat, Dog, Pig
Immunogen	synthetic peptide corresponding to a region within N terminal amino acids 35-84 (LEAVNGTDARLKCTFSSFAPVGDALVTWNFRPLDGGPEQFVFYHIDP F) of Human EVA1 (NP_005788) Run BLAST with ExPASy Run BLAST with NCBI
Positive control	OVCAR-3 cell lysate.

Properties

Form	Liquid
Storage instructions	Shipped at 4°C. Upon delivery aliquot and store at -20°C. Avoid freeze / thaw cycles.
Storage buffer	Preservative: 0.09% Sodium azide Constituents: 2% Sucrose, PBS
Purity	Immunogen affinity purified
Clonality	Polyclonal
Isotype	IgG

Applications

Our [Abpromise guarantee](#) covers the use of **ab98877** in the following tested applications.

The application notes include recommended starting dilutions; optimal dilutions/concentrations should be determined by the end user.

Application	Abreviews	Notes
WB		Use a concentration of 1 µg/ml. Predicted molecular weight: 24 kDa. Good results were obtained when blocked with 5% non-fat dry milk in 0.05% PBS-T.

Target

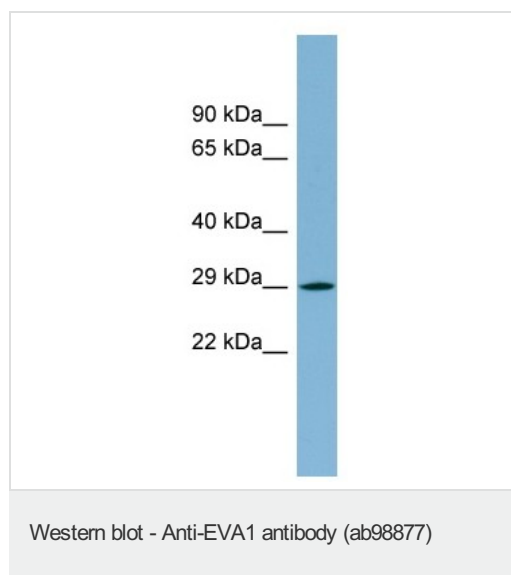
Relevance

Epithelial V-like antigen (EVA) is expressed in thymus epithelium and strongly downregulated by thymocyte developmental progression. EVA1 is expressed in the thymus and in several epithelial structures early in embryogenesis. It is highly homologous to the myelin protein zero and is poorly soluble in nonionic detergents, strongly suggesting an association to the cytoskeleton. Its capacity to mediate cell adhesion through a homophilic interaction and its selective regulation by T cell maturation might imply the participation of EVA in the earliest phases of thymus organogenesis. The protein bears a characteristic V-type domain and two potential N-glycosylation sites in the extracellular domain; a putative serine phosphorylation site for casein kinase 2 is also present in the cytoplasmic tail. EVA1 expression is elevated in some T-cell leukemias. There are two isoforms.

Cellular localization

Cell Membrane; Single-pass type I membrane protein, cytoskeleton

Images



Anti-EVA1 antibody (ab98877) at 1 µg/ml + OVCAR-3 cell lysate at 10 µg

Predicted band size: 24 kDa

12% SDS-PAGE

Please note: All products are "FOR RESEARCH USE ONLY AND ARE NOT INTENDED FOR DIAGNOSTIC OR THERAPEUTIC USE"

Our Abpromise to you: Quality guaranteed and expert technical support

- Replacement or refund for products not performing as stated on the datasheet
- Valid for 12 months from date of delivery
- Response to your inquiry within 24 hours
- We provide support in Chinese, English, French, German, Japanese and Spanish
- Extensive multi-media technical resources to help you
- We investigate all quality concerns to ensure our products perform to the highest standards

If the product does not perform as described on this datasheet, we will offer a refund or replacement. For full details of the Abpromise, please visit <https://www.abcam.com/abpromise> or contact our technical team.

Terms and conditions

- Guarantee only valid for products bought direct from Abcam or one of our authorized distributors