

Product datasheet

Anti-NEURL2 antibody ab99125

1 Image

Overview

Product name	Anti-NEURL2 antibody
Description	Rabbit polyclonal to NEURL2
Host species	Rabbit
Tested applications	Suitable for: WB
Species reactivity	Reacts with: Human Predicted to work with: Mouse, Rat, Rabbit, Horse, Chicken, Guinea pig, Cow, Cat, Dog
Immunogen	Synthetic peptide corresponding to a region within internal amino acids 143-192 (VEPYLRIEQFRIPRDRLVGRSRPGLYSHLLDQLYELNVLPPPTARRSRLGV) of Human NEURL2 (NP_542787). Run BLAST with Run BLAST with
Positive control	Human Placenta Lysate

Properties

Form	Liquid
Storage instructions	Shipped at 4°C. Upon delivery aliquot and store at -20°C. Avoid freeze / thaw cycles.
Storage buffer	Preservative: None Constituents: 2% Sucrose, PBS
Purity	Immunogen affinity purified
Clonality	Polyclonal
Isotype	IgG

Applications

Our [Abpromise guarantee](#) covers the use of **ab99125** in the following tested applications.

The application notes include recommended starting dilutions; optimal dilutions/concentrations should be determined by the end user.

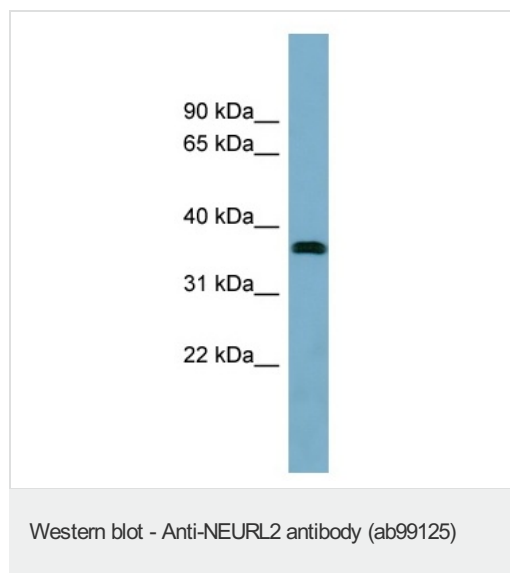
Application	Abreviews	Notes
-------------	-----------	-------

Application	Abreviews	Notes
WB		Use a concentration of 1 µg/ml. Predicted molecular weight: 32 kDa. Good results were obtained when blocked with 5% non-fat dry milk in 0.05% PBS-T.

Target

Function	Plays an important role in the process of myofiber differentiation and maturation. Probable substrate-recognition component of a SCF-like ECS (Elongin BC-CUL2/5-SOCS-box protein) E3 ubiquitin-protein ligase complex, which mediates the ubiquitination of proteins. Probably contributes to catalysis through recognition and positioning of the substrate and the ubiquitin-conjugating enzyme. During myogenesis, controls the ubiquitination and degradation of the specific pool of CTNNB1/beta-catenin located at the sarcolemma.
Tissue specificity	Expressed specifically in skeletal and cardiac muscles.
Pathway	Protein modification; protein ubiquitination.
Sequence similarities	Contains 1 NHR (neuralized homology repeat) domain. Contains 1 SOCS box domain.
Domain	The SOCS domain mediates the interaction with TCEB1 and TCEB2, while the NHR domain may be involved in ubiquitination substrate binding.
Cellular localization	Cytoplasm.

Images



Anti-NEURL2 antibody (ab99125) at 1 µg/ml +
Human Placenta Lysate at 10 µg

Predicted band size: 32 kDa

12% SDS PAGE

Please note: All products are "FOR RESEARCH USE ONLY AND ARE NOT INTENDED FOR DIAGNOSTIC OR THERAPEUTIC USE"

Our Abpromise to you: Quality guaranteed and expert technical support

- Replacement or refund for products not performing as stated on the datasheet
- Valid for 12 months from date of delivery

- Response to your inquiry within 24 hours
- We provide support in Chinese, English, French, German, Japanese and Spanish
- Extensive multi-media technical resources to help you
- We investigate all quality concerns to ensure our products perform to the highest standards

If the product does not perform as described on this datasheet, we will offer a refund or replacement. For full details of the Abpromise, please visit <https://www.abcam.com/abpromise> or contact our technical team.

Terms and conditions

- Guarantee only valid for products bought direct from Abcam or one of our authorized distributors