


Product datasheet

Anti-TOM1 antibody ab99355

1 Image

Overview

Product name	Anti-TOM1 antibody
Description	Rabbit polyclonal to TOM1
Host species	Rabbit
Tested applications	Suitable for: IP Unsuitable for: WB
Species reactivity	Reacts with: Human Predicted to work with: Horse, Dog, Chimpanzee, Ferret, Rhesus monkey, Orangutan 
Immunogen	Synthetic peptide, corresponding to a region amino acids 400-450 of Human TOM1 (NP_005479.1).
Positive control	HeLa whole cell lysate.

Properties

Form	Liquid
Storage instructions	Shipped at 4°C. Upon delivery aliquot and store at -20°C. Avoid freeze / thaw cycles.
Storage buffer	Preservative: 0.09% Sodium Azide Constituents: Tris citrate/phosphate, pH 7-8
Purity	Immunogen affinity purified
Clonality	Polyclonal
Isotype	IgG

Applications

Our [Abpromise guarantee](#) covers the use of **ab99355** in the following tested applications.

The application notes include recommended starting dilutions; optimal dilutions/concentrations should be determined by the end user.

Application	Abreviews	Notes
IP		Use at 2-5 µg/mg of lysate.

Application notes Is unsuitable for WB.

Target

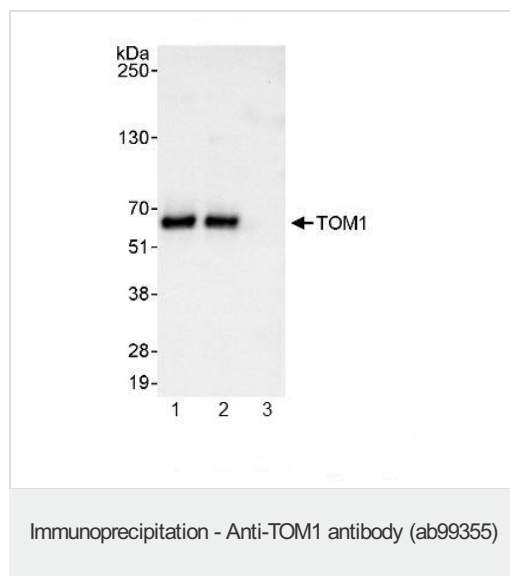
Relevance

Function: May be involved in intracellular trafficking. Probable association with membranes.
Tissue specificity: Widely expressed. Highly expressed in skeletal muscle, heart, placenta and liver. Similarity: Belongs to the TOM1 family. Contains 1 GAT domain. Contains 1 VHS domain.

Cellular localization

Cytoplasm. Membrane; Peripheral membrane protein

Images



[ab99356](#) (a rabbit anti-TOM1 antibody which recognizes a downstream epitope) at 1 μ g/ml detecting TOM1 in HeLa whole cell lysate by western blot analysis following immunoprecipitation. Detection utilised ECL with a 3 second exposure.

For immunoprecipitation, ab99355 was used at at 3 μ g/mg lysate; 1 mg of lysate was used for IP and 20% of IP was loaded.

Lane 1; IP using ab99355.

Lane 2; IP using [ab99356](#).

Lane 3; IP using control IgG.

Please note: All products are "FOR RESEARCH USE ONLY AND ARE NOT INTENDED FOR DIAGNOSTIC OR THERAPEUTIC USE"

Our Abpromise to you: Quality guaranteed and expert technical support

- Replacement or refund for products not performing as stated on the datasheet
- Valid for 12 months from date of delivery
- Response to your inquiry within 24 hours
- We provide support in Chinese, English, French, German, Japanese and Spanish
- Extensive multi-media technical resources to help you
- We investigate all quality concerns to ensure our products perform to the highest standards

If the product does not perform as described on this datasheet, we will offer a refund or replacement. For full details of the Abpromise, please visit <https://www.abcam.com/abpromise> or contact our technical team.

Terms and conditions

- Guarantee only valid for products bought direct from Abcam or one of our authorized distributors