

## Product datasheet

# Rat monoclonal [187.1] Anti-Mouse kappa light chain (Biotin) ab99618

[2 Images](#)

### Overview

---

<b>Product name</b>	Rat monoclonal [187.1] Anti-Mouse kappa light chain (Biotin)
<b>Host species</b>	Rat
<b>Target species</b>	Mouse
<b>Specificity</b>	ab99618 reacts with mouse kappa light chains. Does not react with other immunoglobulin isotypes or lambda light chains.
<b>Tested applications</b>	<b>Suitable for:</b> ELISA, Flow Cyt, ICC/IF
<b>Immunogen</b>	Other Immunogen Type corresponding to Kappa light chain.
<b>Conjugation</b>	Biotin

### Properties

---

<b>Form</b>	Liquid
<b>Storage instructions</b>	Shipped at 4°C. Store at +4°C short term (1-2 weeks). Upon delivery aliquot. Store at -20°C or -80°C. Avoid freeze / thaw cycle.
<b>Storage buffer</b>	Preservative: 0.1% Sodium Azide Constituents: PBS
<b>Purity</b>	Protein A purified
<b>Clonality</b>	Monoclonal
<b>Clone number</b>	187.1
<b>Isotype</b>	IgG1
<b>Light chain type</b>	kappa

### Applications

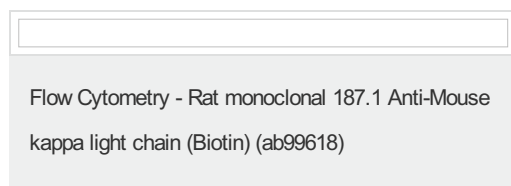
---

Our [Abpromise guarantee](#) covers the use of **ab99618** in the following tested applications.

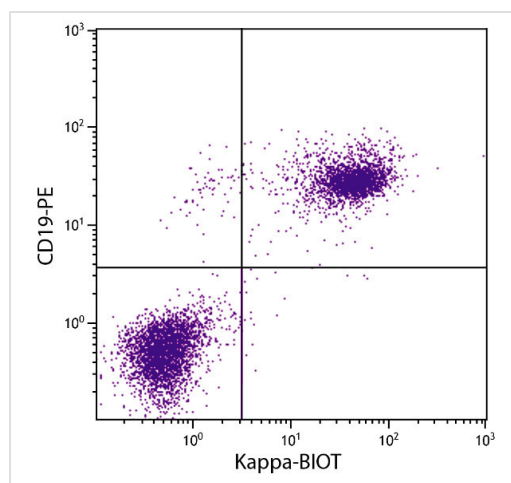
The application notes include recommended starting dilutions; optimal dilutions/concentrations should be determined by the end user.

Application	Abreviews	Notes
ELISA		Use at an assay dependent concentration.
Flow Cyt		Use 1µg for 10 <sup>6</sup> cells. <a href="#">ab18403</a> - Rat monoclonal IgG1, is suitable for use as an isotype control with this antibody.
ICC/IF		Use at an assay dependent concentration.

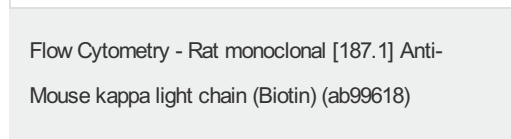
## Images



Flow Cytometry analysis of BALB/c mouse splenocytes stained with Rat monoclonal 187.1 Anti-Mouse kappa light chain (Biotin) ab99618 (1 µg/10<sup>6</sup> cells), and Rat Anti-Mouse CD19-PE followed by Streptavidin-FITC.



Flow Cytometry analysis of BALB/c mouse splenocytes stained with Rat monoclonal 187.1 Anti-Mouse kappa light chain (Biotin) ab99618 (1 µg/10<sup>6</sup> cells), and Rat Anti-Mouse CD19-PE followed by Streptavidin-FITC.



**Please note:** All products are "FOR RESEARCH USE ONLY AND ARE NOT INTENDED FOR DIAGNOSTIC OR THERAPEUTIC USE"

## Our Abpromise to you: Quality guaranteed and expert technical support

- Replacement or refund for products not performing as stated on the datasheet
- Valid for 12 months from date of delivery
- Response to your inquiry within 24 hours
- We provide support in Chinese, English, French, German, Japanese and Spanish
- Extensive multi-media technical resources to help you
- We investigate all quality concerns to ensure our products perform to the highest standards

If the product does not perform as described on this datasheet, we will offer a refund or replacement. For full details of the Abpromise, please visit <https://www.abcam.com/abpromise> or contact our technical team.

### **Terms and conditions**

---

- Guarantee only valid for products bought direct from Abcam or one of our authorized distributors