



Product datasheet

Anti-ABCB5 antibody ab203120

★★★★★ 1 Abreviews 1 Image

Overview

Product name	Anti-ABCB5 antibody
Description	Rabbit polyclonal to ABCB5
Host species	Rabbit
Tested applications	Suitable for: IHC-P, WB
Species reactivity	Reacts with: Mouse, Rat, Human
Immunogen	<p>Synthetic peptide within Human ABCB5 aa 1200-1250 conjugated to Keyhole Limpet Haemocyanin (KLH). The exact sequence is proprietary.</p> <p>Sequence:</p> <p>KARTGRTCLVVTHRLSAIQNADLMVVLHNGKIKEQGTHQ ELLRNRDIYFK L</p> <p>Database link: Q2M3G0</p> <p style="text-align: right;">   </p>
Positive control	Mouse melanoma tissue.

Properties

Form	Liquid
Storage instructions	Shipped at 4°C. Store at +4°C short term (1-2 weeks). Upon delivery aliquot. Store at -20°C long term. Avoid freeze / thaw cycle.
Storage buffer	<p>Preservative: 0.09% Sodium azide</p> <p>Constituents: 50% Glycerol, 0.01% BSA</p>
Purity	Protein A purified
Clonality	Polyclonal
Isotype	IgG

Applications

Our [Abpromise guarantee](#) covers the use of **ab203120** in the following tested applications.

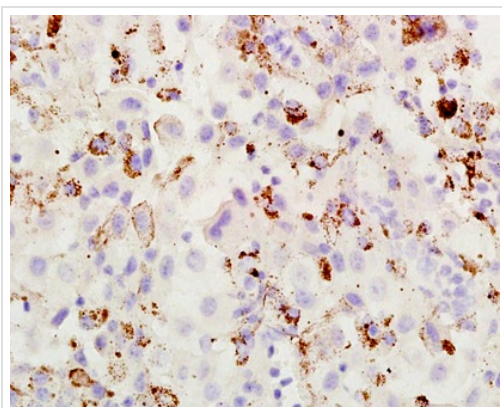
The application notes include recommended starting dilutions; optimal dilutions/concentrations should be determined by the end user.

Application	Abreviews	Notes
IHC-P		1/100 - 1/500. Perform heat mediated antigen retrieval with citrate buffer pH 6 before commencing with IHC staining protocol.
WB		1/100 - 1/1000. Predicted molecular weight: 139 kDa.

Target

Function	Plasma membrane transporter able to mediate efflux from cells of the rhodamine dye and of the therapeutic drug doxorubicin. Responsible for the resistance to doxorubicin of a subset of malignant melanomas.
Tissue specificity	Expressed by CD133-expressing progenitor cells among epidermal melanocytes (at protein level). Widely expressed with specific expression in pigment cells. Also expressed in several malignant tissues.
Sequence similarities	Belongs to the ABC transporter superfamily. ABCB family. Multidrug resistance exporter (TC 3.A.1.201) subfamily. Contains 1 ABC transmembrane type-1 domain. Contains 2 ABC transporter domains.
Cellular localization	Cell membrane.

Images



Immunohistochemical analysis of formalin/PFA-fixed paraffin-embedded mouse melanoma tissue sections labeling ABCB5 with ab203120 at a 1/200 dilution, followed by conjugation to the secondary antibody and DAB staining.

Immunohistochemistry (Formalin/PFA-fixed paraffin-embedded sections) - Anti-ABCB5 antibody (ab203120)

Please note: All products are "FOR RESEARCH USE ONLY. NOT FOR USE IN DIAGNOSTIC PROCEDURES"

Our Abpromise to you: Quality guaranteed and expert technical support

- Replacement or refund for products not performing as stated on the datasheet
- Valid for 12 months from date of delivery

- Response to your inquiry within 24 hours
- We provide support in Chinese, English, French, German, Japanese and Spanish
- Extensive multi-media technical resources to help you
- We investigate all quality concerns to ensure our products perform to the highest standards

If the product does not perform as described on this datasheet, we will offer a refund or replacement. For full details of the Abpromise, please visit <https://www.abcam.com/abpromise> or contact our technical team.

Terms and conditions

- Guarantee only valid for products bought direct from Abcam or one of our authorized distributors