


Product datasheet

Anti-ABCB6/PRP antibody ab47837

1 Image

Overview

<b>Product name</b>	Anti-ABCB6/PRP antibody
<b>Description</b>	Rabbit polyclonal to ABCB6/PRP
<b>Host species</b>	Rabbit
<b>Tested applications</b>	<b>Suitable for:</b> WB
<b>Species reactivity</b>	<b>Reacts with:</b> Human <b>Predicted to work with:</b> Mouse, Rat 
<b>Immunogen</b>	Synthetic peptide corresponding to Human ABCB6/PRP aa 440-455 (internal sequence). Sequence: RAMNTQENATRRAVD  <a href="#">Run BLAST with</a> <a href="#">Run BLAST with</a>
<b>Positive control</b>	KB cells transfected with the ABCB6/PRP protein.
<b>General notes</b>	The Life Science industry has been in the grips of a reproducibility crisis for a number of years. Abcam is leading the way in addressing this with our range of recombinant monoclonal antibodies and knockout edited cell lines for gold-standard validation. Please check that this product meets your needs before purchasing.  If you have any questions, special requirements or concerns, please send us an inquiry and/or contact our Support team ahead of purchase. Recommended alternatives for this product can be found below, along with publications, customer reviews and Q&As

Properties

<b>Form</b>	Liquid
<b>Storage instructions</b>	Shipped at 4°C. Upon delivery aliquot and store at -20°C or -80°C. Avoid repeated freeze / thaw cycles.
<b>Storage buffer</b>	Preservative: 0.01% Sodium azide Constituents: 0.42% Potassium phosphate, 0.87% Sodium chloride
<b>Purity</b>	Immunogen affinity purified
<b>Clonality</b>	Polyclonal
<b>Isotype</b>	IgG

## Applications

### The Abpromise guarantee

Our [Abpromise guarantee](#) covers the use of ab47837 in the following tested applications.

The application notes include recommended starting dilutions; optimal dilutions/concentrations should be determined by the end user.

Application	Abreviews	Notes
WB		

### Application notes

ELISA: 1/40000 - 1/200000.

IF (microscopy): Use at an assay dependent dilution.

WB: 1/1000 - 1/5000. Predicted molecular weight: 93 kDa.

Not yet tested in other applications.

Optimal dilutions/concentrations should be determined by the end user.

## Target

### Function

Binds heme and porphyrins and functions in their ATP-dependent uptake into the mitochondria. Plays a crucial role in heme synthesis.

### Tissue specificity

Widely expressed. Highest expression in heart and skeletal muscles.

### Sequence similarities

Belongs to the ABC transporter superfamily. ABCB family. Heavy Metal importer (TC 3.A.1.210) subfamily.

Contains 1 ABC transmembrane type-1 domain.

Contains 1 ABC transporter domain.

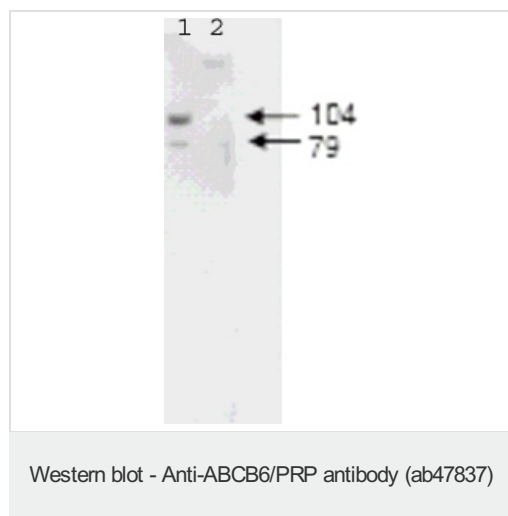
### Developmental stage

Highly expressed in fetal liver.

### Cellular localization

Mitochondrion outer membrane.

## Images



**All lanes :** Anti-ABCB6/PRP antibody (ab47837) at 1/1400 dilution

**Lane 1 :** KB cell lysate expressing Flag™-tagged human ABCB6/PRP protein

**Lane 2 :** KB cell lysate without a vector insert

**Predicted band size:** 93 kDa

**Observed band size:** 104 kDa

**Additional bands at:** 79 kDa (possible truncated form)

**Please note:** All products are "FOR RESEARCH USE ONLY. NOT FOR USE IN DIAGNOSTIC PROCEDURES"

## **Our Abpromise to you: Quality guaranteed and expert technical support**

---

- Replacement or refund for products not performing as stated on the datasheet
- Valid for 12 months from date of delivery
- Response to your inquiry within 24 hours
  
- We provide support in Chinese, English, French, German, Japanese and Spanish
- Extensive multi-media technical resources to help you
- We investigate all quality concerns to ensure our products perform to the highest standards

If the product does not perform as described on this datasheet, we will offer a refund or replacement. For full details of the Abpromise, please visit <https://www.abcam.com/abpromise> or contact our technical team.

## **Terms and conditions**

---

- Guarantee only valid for products bought direct from Abcam or one of our authorized distributors