



Product datasheet

Anti-ABCB6/PRP antibody - C-terminal ab194409

1 References 4 Images

Overview

Product name	Anti-ABCB6/PRP antibody - C-terminal
Description	Mouse polyclonal to ABCB6/PRP - C-terminal
Host species	Mouse
Tested applications	Suitable for: WB
Species reactivity	Reacts with: Mouse, Rat, Human
Immunogen	<p>Recombinant fragment (GST-tag) corresponding to Human ABCB6/PRP aa 743-842 (C terminal). NP_005680</p> <p>Sequence:</p> <p>KAPGILLDEATSALDTSNERAIQASLAKVCANRTTIVVAHR LSTVVNAD QILVIKDGCIVERGRHEALLSRGGVYADMWQLQQQEETS EDTKPQTMER</p> <p>Database link: Q9NP58</p> <p style="text-align: right;">  Run BLAST with  Run BLAST with </p>
Positive control	HeLa, RAW264.7, PC-12 and NIH3T3 cell lysate.
General notes	This product was previously labelled as ABCB6

Reproducibility is key to advancing scientific discovery and accelerating scientists' next breakthrough.

Abcam is leading the way with our range of recombinant antibodies, knockout-validated antibodies and knockout cell lines, all of which support improved reproducibility.

We are also planning to innovate the way in which we present recommended applications and species on our product datasheets, so that only applications & species that have been tested in our own labs, our suppliers or by selected trusted collaborators are covered by our Abpromise™ guarantee.

In preparation for this, we have started to update the applications & species that this product is Abpromise guaranteed for.

We are also updating the applications & species that this product has been “predicted to work with,” however this information is not covered by our Abpromise guarantee.

Applications & species from publications and Abreviews that have not been tested in our own labs or in those of our suppliers are not covered by the Abpromise guarantee.

Please check that this product meets your needs before purchasing. If you have any questions, special requirements or concerns, please send us an inquiry and/or contact our Support team ahead of purchase. Recommended alternatives for this product can be found below, as well as customer reviews and Q&As.

Properties

Form	Liquid
Storage instructions	Shipped at 4°C. Store at +4°C short term (1-2 weeks). Upon delivery aliquot. Store at -20°C long term. Avoid freeze / thaw cycle.
Storage buffer	Constituent: 50% Glycerol (glycerin, glycerine)
Purity	Whole antiserum
Clonality	Polyclonal
Isotype	IgG

Applications

Our [Abpromise guarantee](#) covers the use of **ab194409** in the following tested applications.

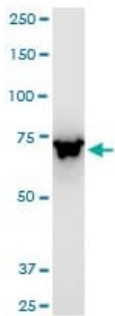
The application notes include recommended starting dilutions; optimal dilutions/concentrations should be determined by the end user.

Application	Abreviews	Notes
WB		1/500 - 1/2500. Predicted molecular weight: 94 kDa.

Target

Function	Binds heme and porphyrins and functions in their ATP-dependent uptake into the mitochondria. Plays a crucial role in heme synthesis.
Tissue specificity	Widely expressed. Highest expression in heart and skeletal muscles.
Sequence similarities	Belongs to the ABC transporter superfamily. ABCB family. Heavy Metal importer (TC 3.A.1.210) subfamily. Contains 1 ABC transmembrane type-1 domain. Contains 1 ABC transporter domain.
Developmental stage	Highly expressed in fetal liver.
Cellular localization	Mitochondrion outer membrane.

Images



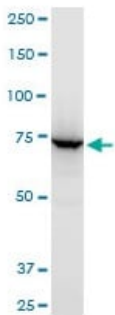
Western blot - Anti-ABCB6/PRP antibody - C-terminal (ab194409)

Anti-ABCB6/PRP antibody - C-terminal (ab194409) at 1/500 dilution + NIH3T3 cell lysate at 50 μ g

Secondary

Goat Anti-Mouse IgG at 1/2500 dilution

Predicted band size: 94 kDa



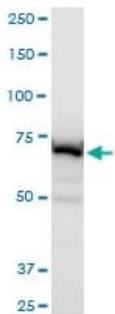
Western blot - Anti-ABCB6/PRP antibody - C-terminal (ab194409)

Anti-ABCB6/PRP antibody - C-terminal (ab194409) at 1/500 dilution + RAW264.7 cell lysate at 50 μ g

Secondary

Goat Anti-Mouse IgG at 1/2500 dilution

Predicted band size: 94 kDa



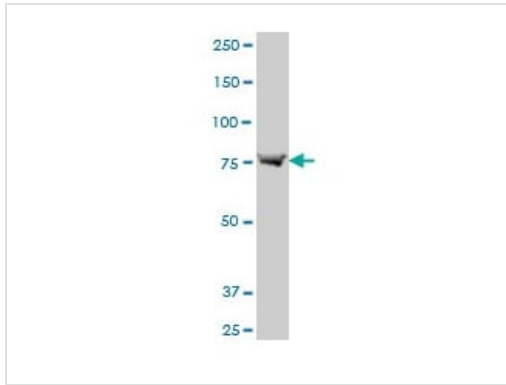
Western blot - Anti-ABCB6/PRP antibody - C-terminal (ab194409)

Anti-ABCB6/PRP antibody - C-terminal (ab194409) at 1/500 dilution + PC-12 cell lysate at 50 μ g

Secondary

Goat Anti-Mouse IgG at 1/2500 dilution

Predicted band size: 94 kDa



Western blot - Anti-ABCB6/PRP antibody - C-terminal (ab194409)

Anti-ABCB6/PRP antibody - C-terminal (ab194409) at 1/500 dilution + HeLa cell lysate at 50 µg

Secondary

Goat Anti-Mouse IgG at 1/2500 dilution

Predicted band size: 94 kDa

Please note: All products are "FOR RESEARCH USE ONLY. NOT FOR USE IN DIAGNOSTIC PROCEDURES"

Our Abpromise to you: Quality guaranteed and expert technical support

- Replacement or refund for products not performing as stated on the datasheet
- Valid for 12 months from date of delivery
- Response to your inquiry within 24 hours
- We provide support in Chinese, English, French, German, Japanese and Spanish
- Extensive multi-media technical resources to help you
- We investigate all quality concerns to ensure our products perform to the highest standards

If the product does not perform as described on this datasheet, we will offer a refund or replacement. For full details of the Abpromise, please visit <https://www.abcam.com/abpromise> or contact our technical team.

Terms and conditions

- Guarantee only valid for products bought direct from Abcam or one of our authorized distributors