

Product datasheet

Anti-ABCE1 antibody [EPR15373(B)] - C-terminal ab185548

Recombinant RabMAb

5 References 7 Images

Overview

Product name	Anti-ABCE1 antibody [EPR15373(B)] - C-terminal
Description	Rabbit monoclonal [EPR15373(B)] to ABCE1 - C-terminal
Host species	Rabbit
Tested applications	Suitable for: ICC/IF, IP, WB, IHC-P, Flow Cyt
Species reactivity	Reacts with: Mouse, Rat, Human
Immunogen	Synthetic peptide (the amino acid sequence is considered to be commercially sensitive) within Human ABCE1 aa 550 to the C-terminus. The exact sequence is proprietary. Database link: P61221
Positive control	293, K562 and HeLa cell lysate. Human breast carcinoma. Mouse liver. HeLa and 293 cells.
General notes	

This product is a recombinant monoclonal antibody, which offers several advantages including:

- High batch-to-batch consistency and reproducibility
- Improved sensitivity and specificity
- Long-term security of supply
- Animal-free production

For more information [see here](#).

Our RabMAb[®] technology is a patented hybridoma-based technology for making rabbit monoclonal antibodies. For details on our patents, please refer to [RabMAb[®] patents](#).

Properties

Form	Liquid
Storage instructions	Shipped at 4°C. Store at +4°C short term (1-2 weeks). Upon delivery aliquot. Store at -20°C long term. Avoid freeze / thaw cycle.
Storage buffer	Preservative: 0.01% Sodium azide Constituents: 40% Glycerol, 59% PBS, 0.05% BSA
Purity	Protein A purified

Clonality	Monoclonal
Clone number	EPR15373(B)
Isotype	IgG

Applications

Our [Abpromise guarantee](#) covers the use of **ab185548** in the following tested applications.

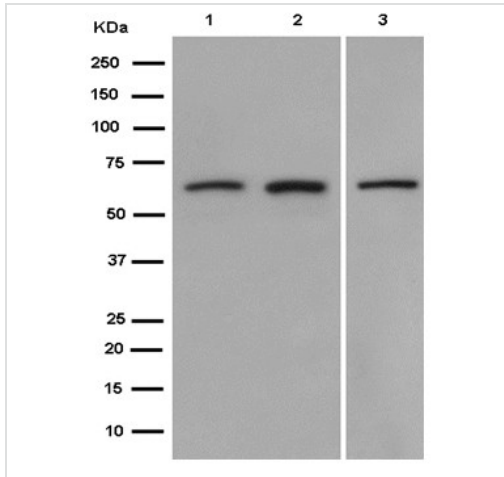
The application notes include recommended starting dilutions; optimal dilutions/concentrations should be determined by the end user.

Application	Abreviews	Notes
ICC/IF		1/100 - 1/250.
IP		1/30 - 1/50.
WB		1/1000 - 1/10000. Detects a band of approximately 67 kDa (predicted molecular weight: 67 kDa).
IHC-P		1/100. Perform heat mediated antigen retrieval with Tris/EDTA buffer pH 9.0 before commencing with IHC staining protocol.
Flow Cyt		1/220. ab172730 - Rabbit monoclonal IgG, is suitable for use as an isotype control with this antibody.

Target

Function	Antagonizes the binding of 2-5A (5'-phosphorylated 2',5'-linked oligoadenylates) by RNase L through direct interaction with RNase L and therefore inhibits its endoribonuclease activity. May play a central role in the regulation of mRNA turnover. Antagonizes the anti-viral effect of the interferon-regulated 2-5A/RNase L pathway. May act as a chaperone for post-translational events during HIV-1 capsid assembly.
Sequence similarities	Belongs to the ABC transporter superfamily. ABCE family. Contains 2 4Fe-4S ferredoxin-type domains. Contains 2 ABC transporter domains.
Cellular localization	Cytoplasm. Mitochondrion. Localized to clusters of virus formation at the plasma membrane.

Images



Western blot - Anti-ABCE1 antibody [EPR15373(B)] - C-terminal (ab185548)

All lanes : Anti-ABCE1 antibody [EPR15373(B)] - C-terminal (ab185548) at 1/5000 dilution

Lane 1 : 293 cell lysate

Lane 2 : K562 cell lysate

Lane 3 : HeLa cell lysate

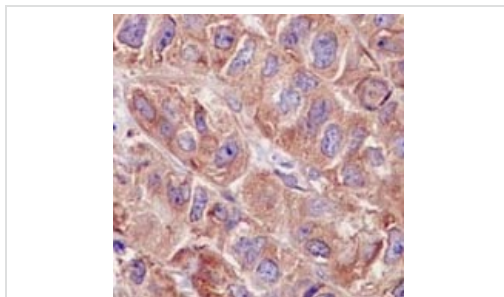
Lysates/proteins at 20 µg per lane.

Secondary

All lanes : Goat Anti-Rabbit IgG, (H+L), Peroxidase conjugated at 1/1000 dilution

Predicted band size: 67 kDa

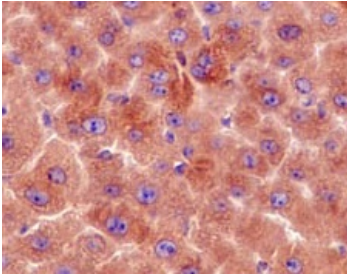
Observed band size: 67 kDa



Immunohistochemistry (Formalin/PFA-fixed paraffin-embedded sections) - Anti-ABCE1 antibody [EPR15373(B)] - C-terminal (ab185548)

Immunohistochemical analysis of paraffin embedded Human breast carcinoma tissue sections labeling ABCE1 using ab185548 at a 1/100 dilution. A ready to use HRP Polymer for Rabbit IgG was used as the secondary. Hematoxylin counterstain.

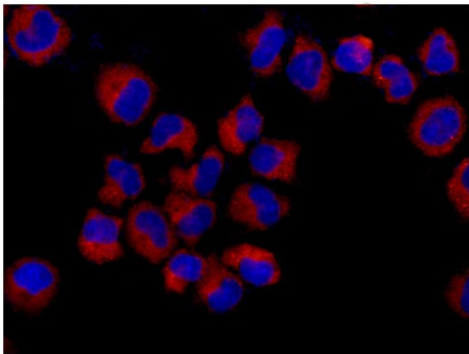
Perform heat mediated antigen retrieval with EDTA buffer pH 9 before commencing with IHC staining protocol.



Immunohistochemistry (Formalin/PFA-fixed paraffin-embedded sections) - Anti-ABCE1 antibody [EPR15373(B)] - C-terminal (ab185548)

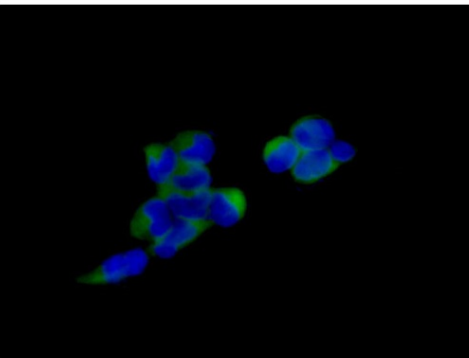
Immunohistochemical analysis of paraffin embedded mouse liver tissue sections labeling ABCE1 using ab185548 at a 1/100 dilution. A ready to use HRP Polymer for Rabbit IgG was used as the secondary. Hematoxylin counterstain.

Perform heat mediated antigen retrieval with EDTA buffer pH 9 before commencing with IHC staining protocol.



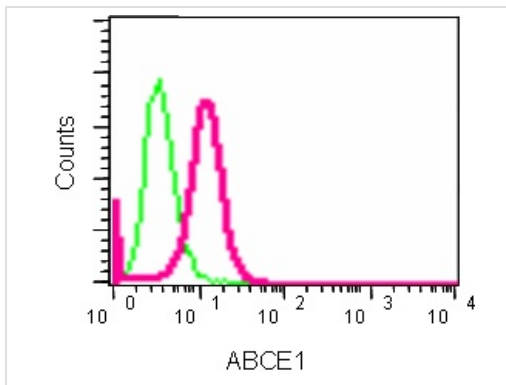
Immunocytochemistry/ Immunofluorescence - Anti-ABCE1 antibody [EPR15373(B)] - C-terminal (ab185548)

Immunofluorescent analysis of formaldehyde fixed HeLa cells labeling ABCE1 using ab185548 at a 1/250 dilution. A Goat anti rabbit IgG (Alexa Fluor®555) was used as the secondary at a 1/200 dilution.



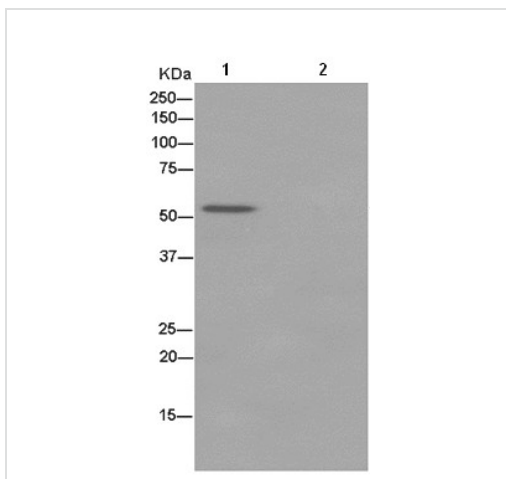
Immunocytochemistry/ Immunofluorescence - Anti-ABCE1 antibody [EPR15373(B)] - C-terminal (ab185548)

Immunofluorescent analysis of formaldehyde fixed 293 cells labeling ABCE1 using ab185548 at a 1/100 dilution. A Goat anti rabbit IgG (Alexa Fluor®488) was used as the secondary at a 1/200 dilution.



Flow Cytometry - Anti-ABCE1 antibody
[EPR15373(B)] - C-terminal (ab185548)

Flow Cytometry analysis of K562 cells labeling ABCE1 using ab185548 at a 1/220 dilution (pink). Goat anti rabbit IgG (FITC) used as the secondary at a 1/150 dilution. Isotype control Rabbit monoclonal IgG (green). Cells were fixed in 2% paraformaldehyde.



Immunoprecipitation - Anti-ABCE1 antibody
[EPR15373(B)] - C-terminal (ab185548)

Western blot analysis of ABCE1 in immunoprecipitation pellets from 293 lysate (Lane 1) or 1XPBS (negative control) (Lane 2) using ab185548 at 1/50 dilution. Secondary antibody, Anti-Rabbit IgG (HRP), specific to the non-reduced form of IgG at a 1/1500 dilution.

Please note: All products are "FOR RESEARCH USE ONLY. NOT FOR USE IN DIAGNOSTIC PROCEDURES"

Our Abpromise to you: Quality guaranteed and expert technical support

- Replacement or refund for products not performing as stated on the datasheet
- Valid for 12 months from date of delivery
- Response to your inquiry within 24 hours
- We provide support in Chinese, English, French, German, Japanese and Spanish
- Extensive multi-media technical resources to help you
- We investigate all quality concerns to ensure our products perform to the highest standards

If the product does not perform as described on this datasheet, we will offer a refund or replacement. For full details of the Abpromise, please visit <https://www.abcam.com/abpromise> or contact our technical team.

Terms and conditions

- Guarantee only valid for products bought direct from Abcam or one of our authorized distributors