


Product datasheet

Anti-ABLIM2 antibody ab100926

2 Images

Overview

<b>Product name</b>	Anti-ABLIM2 antibody
<b>Description</b>	Rabbit polyclonal to ABLIM2
<b>Host species</b>	Rabbit
<b>Tested applications</b>	<b>Suitable for:</b> WB, IHC-P
<b>Species reactivity</b>	<b>Reacts with:</b> Human <b>Predicted to work with:</b> Mouse, Rat 
<b>Immunogen</b>	Recombinant fragment, corresponding to amino acids 74-309 of Human ABLIM2 (BC122567).
<b>Positive control</b>	Human Fetal Heart, Human Fetal Brain, Human Fetal Muscle, Human Fetal Skeletal Muscle

Properties

<b>Form</b>	Lyophilised:Reconstitute with 200ul distilled sterile water. Please note that if you receive this product in liquid form it has already been reconstituted as described and no further reconstitution is necessary.
<b>Storage instructions</b>	Shipped at 4°C. Upon delivery aliquot and store at -20°C. Avoid freeze / thaw cycles.
<b>Storage buffer</b>	Preservative: 0.02% Sodium azide
<b>Purity</b>	Protein A purified
<b>Clonality</b>	Polyclonal
<b>Isotype</b>	IgG

Applications

Our [Abpromise guarantee](#) covers the use of **ab100926** in the following tested applications.

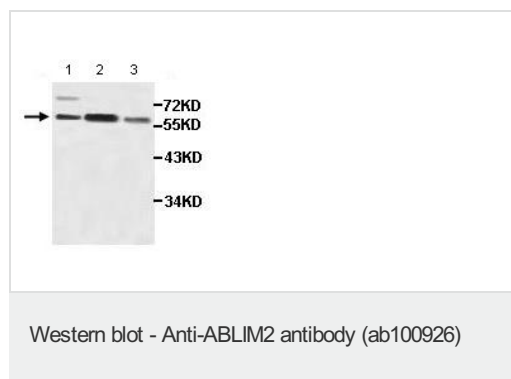
The application notes include recommended starting dilutions; optimal dilutions/concentrations should be determined by the end user.

Application	Abreviews	Notes
WB		1/500 - 1/1000. Predicted molecular weight: 68 kDa.
IHC-P		1/100 - 1/500.

## Target

<b>Function</b>	May act as scaffold protein. May stimulate ABRA activity and ABRA-dependent SRF transcriptional activity.
<b>Tissue specificity</b>	Highly expressed in skeletal muscle.
<b>Sequence similarities</b>	Contains 1 HP (headpiece) domain. Contains 4 LIM zinc-binding domains.
<b>Cellular localization</b>	Cytoplasm. In skeletal muscle, sarcomeric or cosarcomeric localization.

## Images



**All lanes :** Anti-ABLIM2 antibody (ab100926) at 1/500 dilution

**Lane 1 :** Human fetal heart lysate

**Lane 2 :** Human fetal brain lysate

**Lane 3 :** Human fetal muscle lysate

**Predicted band size:** 68 kDa



Cytoplasmic staining of ABLIM2 in a Formalin/PFA-fixed paraffin-embedded section of Human Fetal Skeletal Muscle using ab100926 at a dilution of 1/100.

**Please note:** All products are "FOR RESEARCH USE ONLY. NOT FOR USE IN DIAGNOSTIC PROCEDURES"

## Our Abpromise to you: Quality guaranteed and expert technical support

- Replacement or refund for products not performing as stated on the datasheet
- Valid for 12 months from date of delivery
- Response to your inquiry within 24 hours
- We provide support in Chinese, English, French, German, Japanese and Spanish
- Extensive multi-media technical resources to help you
- We investigate all quality concerns to ensure our products perform to the highest standards

If the product does not perform as described on this datasheet, we will offer a refund or replacement. For full details of the Abpromise, please visit <https://www.abcam.com/abpromise> or contact our technical team.

## Terms and conditions

---

- Guarantee only valid for products bought direct from Abcam or one of our authorized distributors