

Product datasheet

Anti-ACAA1/Beta-ketothiolase antibody ab224235

7 Images

Overview

<b>Product name</b>	Anti-ACAA1/Beta-ketothiolase antibody
<b>Description</b>	Rabbit polyclonal to ACAA1/Beta-ketothiolase
<b>Host species</b>	Rabbit
<b>Tested applications</b>	<b>Suitable for:</b> ICC/IF, WB, IHC-P
<b>Species reactivity</b>	<b>Reacts with:</b> Mouse, Rat, Human
<b>Immunogen</b>	Recombinant fragment corresponding to Human ACAA1/Beta-ketothiolase aa 72-199. Sequence:  VLKDVNLRPEQLGDICVGNVLQPGAGAIMARIAQFLSDI PETVPLSTVNR QCSSGLQAVASIAGGIRNGSYDIGMACGVESMSLADR GNPGNITSRLMEK EKARDCLIPMGITSENAERFGISREKQ  Database link: <a href="#">P09110</a>  <a href="#">Run BLAST with</a> <a href="#">Run BLAST with</a>
<b>Positive control</b>	WB: RT4 and U-251 cell lysates; plasma, liver and tonsil tissue lysates IHC-P: Human colon, kidney, liver and pancreas tissue. ICC/IF: U-251 MG cells.
<b>General notes</b>	This product was previously labelled as ACAA1

Properties

<b>Form</b>	Liquid
<b>Storage instructions</b>	Shipped at 4°C. Store at +4°C short term (1-2 weeks). Upon delivery aliquot. Store at -20°C long term. Avoid freeze / thaw cycle.
<b>Storage buffer</b>	pH: 7.20 Preservative: 0.02% Sodium azide Constituents: 40% Glycerol, PBS
<b>Purity</b>	Immunogen affinity purified
<b>Clonality</b>	Polyclonal
<b>Isotype</b>	IgG

## Applications

Our [Abpromise guarantee](#) covers the use of **ab224235** in the following tested applications.

The application notes include recommended starting dilutions; optimal dilutions/concentrations should be determined by the end user.

Application	Abreviews	Notes
ICC/IF		Use a concentration of 1 - 4 µg/ml. Fixation/Permeabilization: PFA/Triton X-100
WB		1/100 - 1/250. Predicted molecular weight: 44 kDa.
IHC-P		1/50 - 1/200. Perform heat mediated antigen retrieval with citrate buffer pH 6 before commencing with IHC staining protocol.

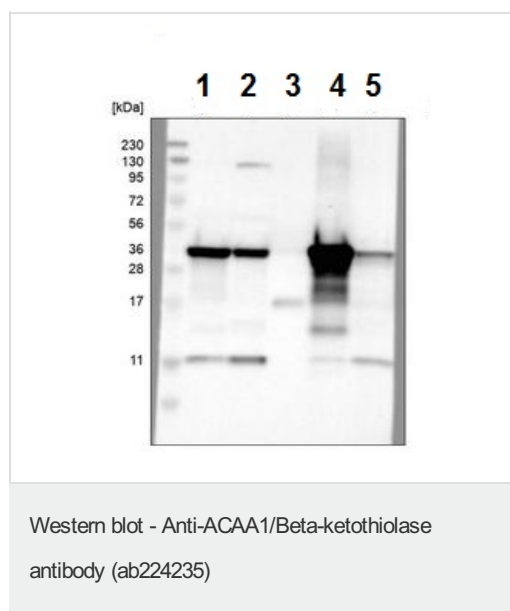
## Target

**Pathway** Lipid metabolism; fatty acid metabolism.

**Sequence similarities** Belongs to the thiolase family.

**Cellular localization** Peroxisome.

## Images



**All lanes** : Anti-ACAA1/Beta-ketothiolase antibody (ab224235) at 0.4 µg/ml

**Lane 1** : RT-4 cell lysate

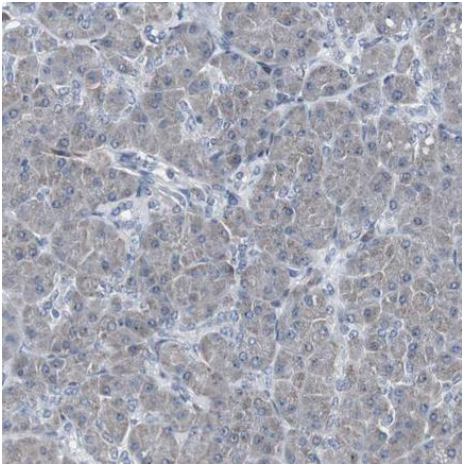
**Lane 2** : U-251 MG cell lysate

**Lane 3** : Human plasma

**Lane 4** : Human liver tissue lysate

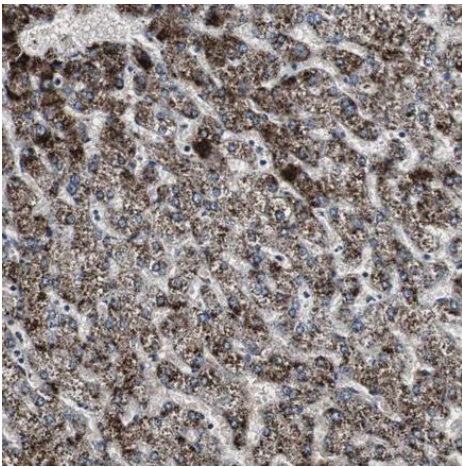
**Lane 5** : Human tonsil tissue lysate

**Predicted band size:** 44 kDa



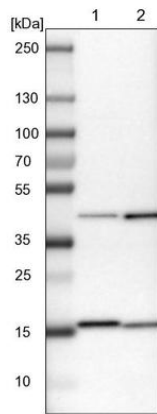
Immunohistochemical analysis of human pancreas labeling ACAA1/Beta-ketothiolase with ab224235 at 1/50.

Immunohistochemistry (Formalin/PFA-fixed paraffin-embedded sections) - Anti-ACAA1/Beta-ketothiolase antibody (ab224235)



Immunohistochemical analysis of human liver labeling ACAA1/Beta-ketothiolase with ab224235 at 1/50.

Immunohistochemistry (Formalin/PFA-fixed paraffin-embedded sections) - Anti-ACAA1/Beta-ketothiolase antibody (ab224235)



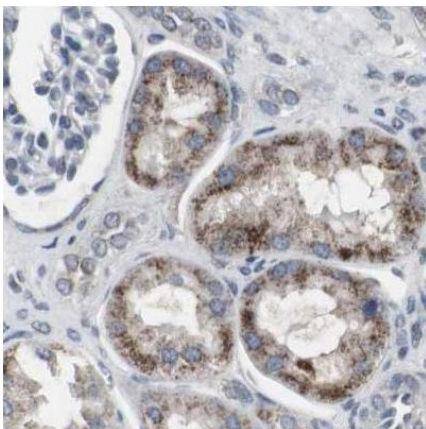
Western blot - Anti-ACAA1/Beta-ketothiolase antibody (ab224235)

**All lanes :** Anti-ACAA1/Beta-ketothiolase antibody (ab224235) at 1/100 dilution

**Lane 1 :** NIH/3T3 (mouse embryo fibroblast cell line) cell lysate

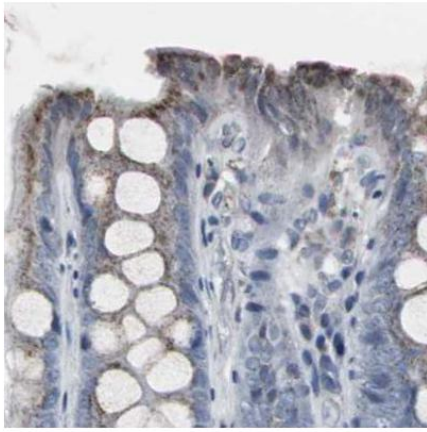
**Lane 2 :** NBT-II (rat Wistar bladder tumor cell line) cell lysate

**Predicted band size:** 44 kDa



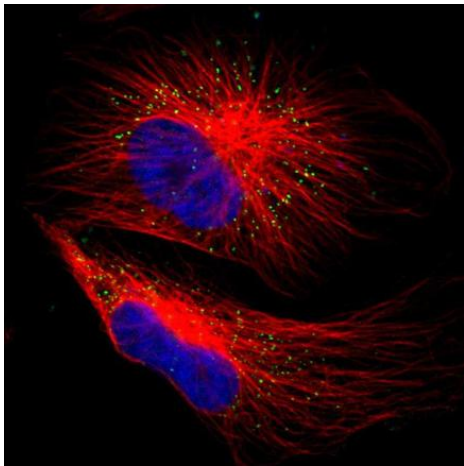
Immunohistochemistry (Formalin/PFA-fixed paraffin-embedded sections) - Anti-ACAA1/Beta-ketothiolase antibody (ab224235)

Immunohistochemical analysis of human kidney labeling ACAA1/Beta-ketothiolase with ab224235 at 1/50.



Immunohistochemical analysis of human colon labeling ACAA1/Beta-ketothiolase with ab224235 at 1/50.

Immunohistochemistry (Formalin/PFA-fixed paraffin-embedded sections) - Anti-ACAA1/Beta-ketothiolase antibody (ab224235)



PFA-fixed, Triton X-100 permeabilized U-251 MG (human brain glioma cell line) cells stained for ACAA1/Beta-ketothiolase (green) using ab224235 (4 µg/ml) in ICC/IF.

Immunocytochemistry/ Immunofluorescence - Anti-ACAA1/Beta-ketothiolase antibody (ab224235)

**Please note:** All products are "FOR RESEARCH USE ONLY AND ARE NOT INTENDED FOR DIAGNOSTIC OR THERAPEUTIC USE"

#### **Our Promise to you: Quality guaranteed and expert technical support**

- Replacement or refund for products not performing as stated on the datasheet
- Valid for 12 months from date of delivery

- Response to your inquiry within 24 hours
- We provide support in Chinese, English, French, German, Japanese and Spanish
- Extensive multi-media technical resources to help you
- We investigate all quality concerns to ensure our products perform to the highest standards

If the product does not perform as described on this datasheet, we will offer a refund or replacement. For full details of the Abpromise, please visit <https://www.abcam.com/abpromise> or contact our technical team.

### **Terms and conditions**

---

- Guarantee only valid for products bought direct from Abcam or one of our authorized distributors