




## Product datasheet

# Anti-ACSS1 antibody ab224176

5 Images

### Overview

<b>Product name</b>	Anti-ACSS1 antibody
<b>Description</b>	Rabbit polyclonal to ACSS1
<b>Host species</b>	Rabbit
<b>Tested applications</b>	<b>Suitable for:</b> IHC-P, WB
<b>Species reactivity</b>	<b>Reacts with:</b> Human <b>Predicted to work with:</b> Mouse 
<b>Immunogen</b>	Recombinant fragment corresponding to Human ACSS1 aa 53-150. Sequence: AQPGSYPALSAQAAREPAAFWGPLARDTLVWDTPTYHTV WDCDFSTGKIGW FLGGQLNVSVNCLDQHVRKSPESVALIWERDEPGTEVRIT YRELLETT  Database link: <a href="#">Q9NUB1</a>   <a href="#">Run BLAST with</a>  <a href="#">Run BLAST with</a>
<b>Positive control</b>	WB: Human cell line RPMI-8226 IHC-P: Human placenta tissue.
<b>General notes</b>	<p>Reproducibility is key to advancing scientific discovery and accelerating scientists' next breakthrough.</p> <p>Abcam is leading the way with our range of recombinant antibodies, knockout-validated antibodies and knockout cell lines, all of which support improved reproducibility.</p> <p>We are also planning to innovate the way in which we present recommended applications and species on our product datasheets, so that only applications &amp; species that have been tested in our own labs, our suppliers or by selected trusted collaborators are covered by our Abpromise™ guarantee.</p> <p>In preparation for this, we have started to update the applications &amp; species that this product is Abpromise guaranteed for.</p> <p>We are also updating the applications &amp; species that this product has been “predicted to work with,” however this information is not covered by our Abpromise guarantee.</p> <p>Applications &amp; species from publications and Abreviews that have not been tested in our own labs or in those of our suppliers are not covered by the Abpromise guarantee.</p> <p>Please check that this product meets your needs before purchasing. If you have any questions, special requirements or concerns, please send us an inquiry and/or contact our Support team</p>

ahead of purchase. Recommended alternatives for this product can be found below, as well as customer reviews and Q&As.

## Properties

---

<b>Form</b>	Liquid
<b>Storage instructions</b>	Shipped at 4°C. Store at +4°C short term (1-2 weeks). Upon delivery aliquot. Store at -20°C long term. Avoid freeze / thaw cycle.
<b>Storage buffer</b>	pH: 7.20 Preservative: 0.02% Sodium azide Constituents: 40% Glycerol (glycerin, glycerine), PBS
<b>Purity</b>	Immunogen affinity purified
<b>Clonality</b>	Polyclonal
<b>Isotype</b>	IgG

## Applications

---

Our [Abpromise guarantee](#) covers the use of **ab224176** in the following tested applications.

The application notes include recommended starting dilutions; optimal dilutions/concentrations should be determined by the end user.

Application	Abreviews	Notes
IHC-P		1/50 - 1/200. Perform heat mediated antigen retrieval with citrate buffer pH 6 before commencing with IHC staining protocol.
WB		Use a concentration of 0.04 - 0.4 µg/ml. Predicted molecular weight: 74 kDa.

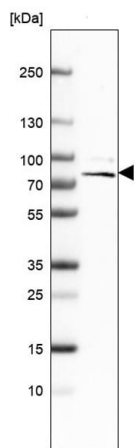
## Target

---

<b>Function</b>	Important for maintaining normal body temperature during fasting and for energy homeostasis. Essential for energy expenditure under ketogenic conditions (By similarity). Converts acetate to acetyl-CoA so that it can be used for oxidation through the tricarboxylic cycle to produce ATP and CO <sub>2</sub> .
<b>Sequence similarities</b>	Belongs to the ATP-dependent AMP-binding enzyme family.
<b>Post-translational modifications</b>	Reversibly acetylated on Lys-642. The acetyl-CoA synthase activity is inhibited by acetylation and activated by deacetylation.
<b>Cellular localization</b>	Mitochondrion matrix.

## Images

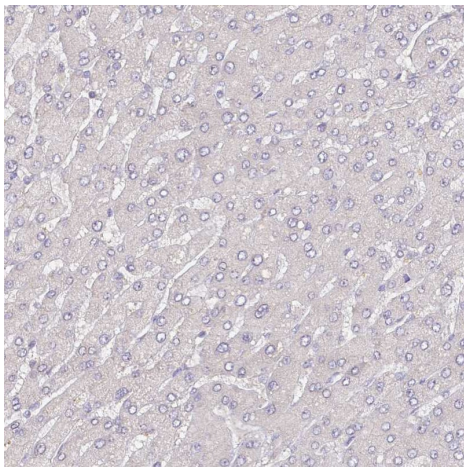
---



Western blot - Anti-ACSS1 antibody (ab224176)

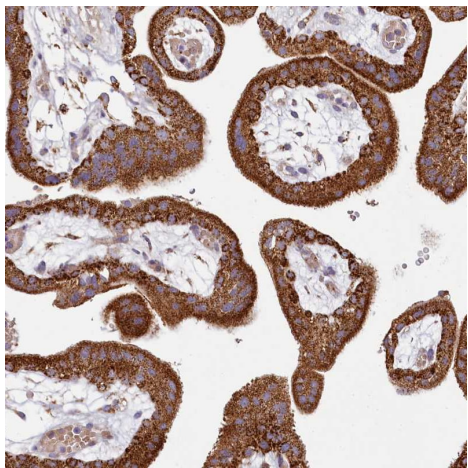
Anti-ACSS1 antibody (ab224176) at 1/250 dilution + Human cell line RPMI-8226

**Predicted band size:** 74 kDa



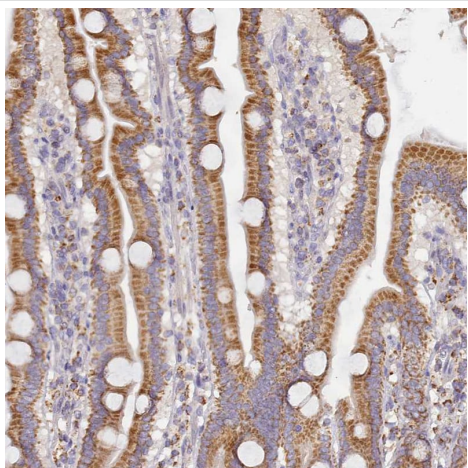
Immunohistochemistry (Formalin/PFA-fixed paraffin-embedded sections) - Anti-ACSS1 antibody (ab224176)

ab224176 staining ACSS1 of human paraffin-embedded liver tissue by immunohistochemical analysis shows no positivity in hepatocytes as expected.



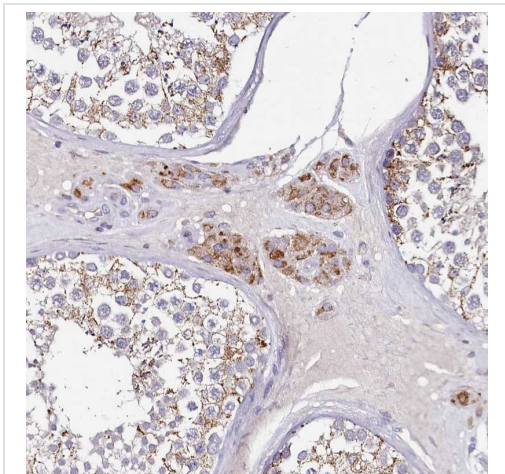
ab224176 staining ACSS1 of human paraffin-embedded placenta tissue by immunohistochemical analysis shows strong granular cytoplasmic positivity in trophoblastic cells.

Immunohistochemistry (Formalin/PFA-fixed paraffin-embedded sections) - Anti-ACSS1 antibody (ab224176)



ab224176 staining ACSS1 of human paraffin-embedded upper duodenum tissue by immunohistochemical analysis shows moderate granular cytoplasmic positivity in glandular cells.

Immunohistochemistry (Formalin/PFA-fixed paraffin-embedded sections) - Anti-ACSS1 antibody (ab224176)



ab224176 staining ACSS1 of human paraffin-embedded testis tissue by immunohistochemical analysis shows moderate granular cytoplasmic positivity in Leydig cells.

Immunohistochemistry (Formalin/PFA-fixed paraffin-embedded sections) - Anti-ACSS1 antibody (ab224176)

**Please note:** All products are "FOR RESEARCH USE ONLY. NOT FOR USE IN DIAGNOSTIC PROCEDURES"

#### **Our Abpromise to you: Quality guaranteed and expert technical support**

---

- Replacement or refund for products not performing as stated on the datasheet
- Valid for 12 months from date of delivery
- Response to your inquiry within 24 hours
- We provide support in Chinese, English, French, German, Japanese and Spanish
- Extensive multi-media technical resources to help you
- We investigate all quality concerns to ensure our products perform to the highest standards

If the product does not perform as described on this datasheet, we will offer a refund or replacement. For full details of the Abpromise, please visit <https://www.abcam.com/abpromise> or contact our technical team.

#### **Terms and conditions**

---

- Guarantee only valid for products bought direct from Abcam or one of our authorized distributors