




Product datasheet

Anti-ACTC1 antibody [C3] ab239475

2 Images

Overview

Product name	Anti-ACTC1 antibody [C3]
Description	Mouse monoclonal [C3] to ACTC1
Host species	Mouse
Tested applications	Suitable for: WB
Species reactivity	Reacts with: Mouse Predicted to work with: Rat, Chicken, Cow, Human, Xenopus tropicalis 
Immunogen	Recombinant fragment (His-T7-tag) corresponding to Human ACTC1 aa 156-368. N-terminal tags. Expressed in E.coli. Sequence: DSGDGVTHNVPIYEGYALPHAIMRLDLAGRDLTDYLMKI LTERGYSFVTT AEREIMRDIKEKLCYVALDFENEMATAASSSSLEKSYE LPDGQVITIGNE RFRCPETLFQPSFIGMESAGIHETTYNSIMKCDIDIRKDL YANNVLSGGT TMYPGIADRMQKEITALAPSTMKIKIAPPERKYSVWIGG SILASLSTFQ QMWISKQEYDEAG Database link: P68032  Run BLAST with  Run BLAST with
Positive control	WB: Recombinant human ACTC1 protein; Mouse heart, skeletal muscle and skin lysates.

Properties

Form	Liquid
Storage instructions	Shipped at 4°C. Store at +4°C short term (1-2 weeks). Upon delivery aliquot. Store at -20°C long term. Avoid freeze / thaw cycle.
Storage buffer	pH: 7.40 Preservative: 0.02% Sodium azide Constituents: PBS, 50% Glycerol
Purity	Protein A/G purified
Purification notes	Purified from TCS.

Clonality	Monoclonal
Clone number	C3
Isotype	IgG2b
Light chain type	kappa

Applications

Our [Abpromise guarantee](#) covers the use of **ab239475** in the following tested applications.

The application notes include recommended starting dilutions; optimal dilutions/concentrations should be determined by the end user.

Application	Abreviews	Notes
WB		Use a concentration of 0.5 - 5 µg/ml. Predicted molecular weight: 42 kDa.

Target

Function Actins are highly conserved proteins that are involved in various types of cell motility and are ubiquitously expressed in all eukaryotic cells.

Involvement in disease Defects in ACTC1 are the cause of cardiomyopathy dilated type 1R (CMD1R) [MIM:613424]. Dilated cardiomyopathy is a disorder characterized by ventricular dilation and impaired systolic function, resulting in congestive heart failure and arrhythmia. Patients are at risk of premature death.

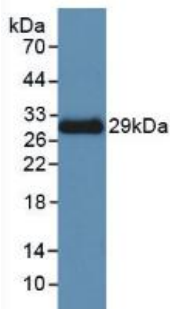
Defects in ACTC1 are the cause of cardiomyopathy familial hypertrophic type 11 (CMH11) [MIM:612098]. Familial hypertrophic cardiomyopathy is a hereditary heart disorder characterized by ventricular hypertrophy, which is usually asymmetric and often involves the interventricular septum. The symptoms include dyspnea, syncope, collapse, palpitations, and chest pain. They can be readily provoked by exercise. The disorder has inter- and intrafamilial variability ranging from benign to malignant forms with high risk of cardiac failure and sudden cardiac death.

Defects in ACTC1 are the cause of atrial septal defect type 5 (ASD5) [MIM:612794]. A congenital heart malformation characterized by incomplete closure of the wall between the atria resulting in blood flow from the left to the right atria.

Sequence similarities Belongs to the actin family.

Cellular localization Cytoplasm > cytoskeleton.

Images



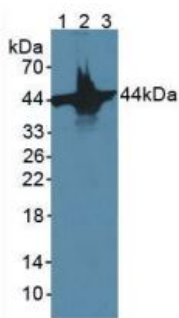
Western blot - Anti-ACTC1 antibody [C3] (ab239475)

Anti-ACTC1 antibody [C3] (ab239475) at 3 µg/ml + Recombinant human ACTC1 protein

Secondary

HRP-Linked Rabbit Anti-Mouse IgG at 1/5000 dilution

Predicted band size: 42 kDa



Western blot - Anti-ACTC1 antibody [C3] (ab239475)

All lanes : Anti-ACTC1 antibody [C3] (ab239475) at 3 µg/ml

Lane 1 : Mouse heart lysate

Lane 2 : Mouse skeletal muscle lysate

Lane 3 : Mouse skin lysate

Secondary

All lanes : HRP-Linked Rabbit Anti-Mouse IgG at 1/5000 dilution

Predicted band size: 42 kDa

Please note: All products are "FOR RESEARCH USE ONLY. NOT FOR USE IN DIAGNOSTIC PROCEDURES"

Our Abpromise to you: Quality guaranteed and expert technical support

- Replacement or refund for products not performing as stated on the datasheet
- Valid for 12 months from date of delivery
- Response to your inquiry within 24 hours
- We provide support in Chinese, English, French, German, Japanese and Spanish
- Extensive multi-media technical resources to help you
- We investigate all quality concerns to ensure our products perform to the highest standards

If the product does not perform as described on this datasheet, we will offer a refund or replacement. For full details of the Abpromise,

please visit <https://www.abcam.com/abpromise> or contact our technical team.

Terms and conditions

- Guarantee only valid for products bought direct from Abcam or one of our authorized distributors