


Product datasheet

Anti-ACTG2 antibody ab133871

1 Image

Overview

Product name	Anti-ACTG2 antibody
Description	Rabbit polyclonal to ACTG2
Host species	Rabbit
Tested applications	Suitable for: WB
Species reactivity	Reacts with: Human Predicted to work with: Mouse, Rat, Rabbit, Goat, Horse, Chicken, Guinea pig, Cow, Cat, Dog, Saccharomyces cerevisiae, Zebrafish 
Immunogen	Synthetic peptide corresponding to a region within C terminal amino acids 325-374 (TMKIKIAPP ERKYSVWIGG SILASLSTFQ QMWISKPEYD EAGPSVHRK) of Human ACTG2 (NP_001606). Run BLAST with ExPASy Run BLAST with NCBI
Positive control	Human fetal lung lysate

Properties

Form	Liquid
Storage instructions	Shipped at 4°C. Upon delivery aliquot and store at -20°C. Avoid repeated freeze / thaw cycles.
Storage buffer	Preservative: 0.09% Sodium azide Constituents: 2% Sucrose, PBS
Purity	Immunogen affinity purified
Clonality	Polyclonal
Isotype	IgG

Applications

Our [Abpromise guarantee](#) covers the use of **ab133871** in the following tested applications.

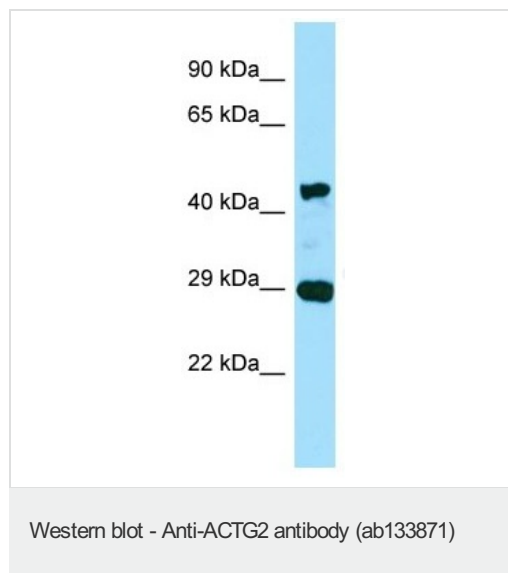
The application notes include recommended starting dilutions; optimal dilutions/concentrations should be determined by the end user.

Application	Abreviews	Notes
WB		Use a concentration of 0.25 µg/ml. Predicted molecular weight: 42 kDa.

Target

Function	Actins are highly conserved proteins that are involved in various types of cell motility and are ubiquitously expressed in all eukaryotic cells.
Sequence similarities	Belongs to the actin family.
Post-translational modifications	Oxidation of Met-45 and Met-48 by MICALs (MICAL1, MICAL2 or MICAL3) to form methionine sulfoxide promotes actin filament depolymerization. MICAL1 and MICAL2 produce the (R)-S-oxide form. The (R)-S-oxide form is reverted by MSRB1 and MSRB2, which promote actin repolymerization. Monomethylation at Lys-85 (K84me1) regulates actin-myosin interaction and actomyosin-dependent processes. Demethylation by ALKBH4 is required for maintaining actomyosin dynamics supporting normal cleavage furrow ingression during cytokinesis and cell migration.
Cellular localization	Cytoplasm > cytoskeleton.

Images



Anti-ACTG2 antibody (ab133871) at 0.25 µg/ml + Fetal lung lysate at 10 µg

Predicted band size: 42 kDa

Please note: All products are "FOR RESEARCH USE ONLY. NOT FOR USE IN DIAGNOSTIC PROCEDURES"

Our Abpromise to you: Quality guaranteed and expert technical support

- Replacement or refund for products not performing as stated on the datasheet
- Valid for 12 months from date of delivery
- Response to your inquiry within 24 hours
- We provide support in Chinese, English, French, German, Japanese and Spanish
- Extensive multi-media technical resources to help you
- We investigate all quality concerns to ensure our products perform to the highest standards

If the product does not perform as described on this datasheet, we will offer a refund or replacement. For full details of the Abpromise, please visit <https://www.abcam.com/abpromise> or contact our technical team.

Terms and conditions

- Guarantee only valid for products bought direct from Abcam or one of our authorized distributors