

Product datasheet

Anti-ACTH antibody [AH26] ab233953

1 Image

Overview

|                            |   |
|----------------------------|---|
| <b>Product name</b>        | Anti-ACTH antibody [AH26]   |
| <b>Description</b>         | Mouse monoclonal [AH26] to ACTH   |
| <b>Host species</b>        | Mouse   |
| <b>Specificity</b>         | ACTH (same as Corticotropin) is a 39 amino acid active peptide produced by the anterior pituitary. This antibody is specific to Synacthen (aa 1-24 of ACTH); does not react with CLIP (aa 17-39 of ACTH).   |
| <b>Tested applications</b> | <b>Suitable for:</b> IHC-P  |
| <b>Species reactivity</b>  | <b>Reacts with:</b> Human   |
| <b>Immunogen</b>           | Synthetic peptide corresponding to Human ACTH aa 1-24.<br>Database link: <a href="#">P01189</a>   |
| <b>Positive control</b>    | IHC-P: Human pituitary gland tissue.  |
| <b>General notes</b>       | <p>Reproducibility is key to advancing scientific discovery and accelerating scientists' next breakthrough.</p> <p>Abcam is leading the way with our range of recombinant antibodies, knockout-validated antibodies and knockout cell lines, all of which support improved reproducibility.</p> <p>We are also planning to innovate the way in which we present recommended applications and species on our product datasheets, so that only applications &amp; species that have been tested in our own labs, our suppliers or by selected trusted collaborators are covered by our Abpromise™ guarantee.</p> <p>In preparation for this, we have started to update the applications &amp; species that this product is Abpromise guaranteed for.</p> <p>We are also updating the applications &amp; species that this product has been “predicted to work with,” however this information is not covered by our Abpromise guarantee.</p> <p>Applications &amp; species from publications and Abreviews that have not been tested in our own labs or in those of our suppliers are not covered by the Abpromise guarantee.</p> <p>Please check that this product meets your needs before purchasing. If you have any questions, special requirements or concerns, please send us an inquiry and/or contact our Support team ahead of purchase. Recommended alternatives for this product can be found below, as well as customer reviews and Q&amp;As.</p> |

Properties

## Properties

---

|                             |   |
|-----------------------------|---|
| <b>Form</b>                 | Liquid  |
| <b>Storage instructions</b> | Shipped at 4°C. Store at +4°C short term (1-2 weeks). Upon delivery aliquot. Store at -20°C long term. Avoid freeze / thaw cycle. |
| <b>Storage buffer</b>       | Preservative: 0.05% Sodium azide<br>Constituents: PBS, 0.05% BSA  |
| <b>Purity</b>               | Protein A/G purified  |
| <b>Purification notes</b>   | Purified from bioreactor concentrate by Protein A/G.  |
| <b>Clonality</b>            | Monoclonal  |
| <b>Clone number</b>         | AH26  |
| <b>Isotype</b>              | IgG1  |
| <b>Light chain type</b>     | kappa   |

## Applications

---

Our [Abpromise guarantee](#) covers the use of **ab233953** in the following tested applications.

The application notes include recommended starting dilutions; optimal dilutions/concentrations should be determined by the end user.

| Application | Abreviews | Notes  |
|-------------|-----------|--|
| IHC-P       |           | Use a concentration of 0.5 - 1 µg/ml. Perform heat mediated antigen retrieval with citrate buffer pH 6 before commencing with IHC staining protocol.<br>Primary incubation for 30 minutes at RT. |

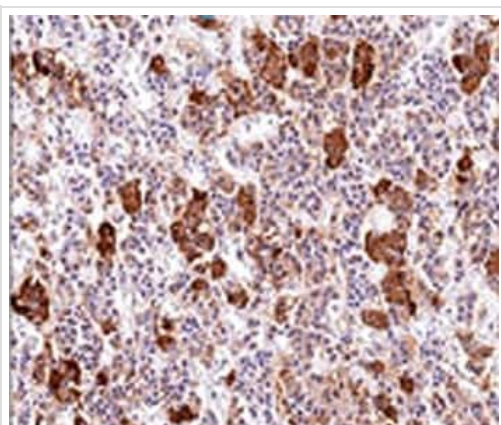
## Target

---

|                              |   |
|------------------------------|---|
| <b>Relevance</b>             | ACTH occurs in cells of the anterior pituitary and in neurons in brain. It regulates the corticosteroid production in the adrenal cortex. Beta endorphin and Met enkephalin are endogenous opiates.<br>MSH (melanocyte stimulating hormone) increases the pigmentation of skin by increasing melanin production in melanocytes. |
| <b>Cellular localization</b> | Secreted  |

## Images

---



Formalin-fixed, paraffin-embedded human pituitary gland tissue stained for ACTH using ab233953 at 1 µg/ml in immunohistochemical analysis.

Immunohistochemistry (Formalin/PFA-fixed paraffin-embedded sections) - Anti-ACTH antibody [AH26] (ab233953)

**Please note:** All products are "FOR RESEARCH USE ONLY. NOT FOR USE IN DIAGNOSTIC PROCEDURES"

### **Our Abpromise to you: Quality guaranteed and expert technical support**

---

- Replacement or refund for products not performing as stated on the datasheet
- Valid for 12 months from date of delivery
- Response to your inquiry within 24 hours
- We provide support in Chinese, English, French, German, Japanese and Spanish
- Extensive multi-media technical resources to help you
- We investigate all quality concerns to ensure our products perform to the highest standards

If the product does not perform as described on this datasheet, we will offer a refund or replacement. For full details of the Abpromise, please visit <https://www.abcam.com/abpromise> or contact our technical team.

### **Terms and conditions**

---

- Guarantee only valid for products bought direct from Abcam or one of our authorized distributors