


Product datasheet

# Anti-Actin Regulatory Protein CAPG/MCP antibody ab90873

1 Image

Overview

---

<b>Product name</b>	Anti-Actin Regulatory Protein CAPG/MCP antibody
<b>Description</b>	Rabbit polyclonal to Actin Regulatory Protein CAPG/MCP
<b>Host species</b>	Rabbit
<b>Tested applications</b>	<b>Suitable for:</b> WB
<b>Species reactivity</b>	<b>Reacts with:</b> Mouse, Human <b>Predicted to work with:</b> Rat, Cow 
<b>Immunogen</b>	Synthetic peptide corresponding to Human Actin Regulatory Protein CAPG/MCP aa 100-200 conjugated to keyhole limpet haemocyanin. (Peptide available as <a href="#">ab101225</a> )
<b>Positive control</b>	Recombinant Human Actin Regulatory Protein CAPG/MCP ( <a href="#">ab95385</a> ) can be used as a positive control in WB. This antibody gave a positive signal in the following whole cell lysates: HL60; U937; THP1; RAW 264.7.
<b>General notes</b>	This product was previously labelled as Actin Regulatory Protein CAPG

Reproducibility is key to advancing scientific discovery and accelerating scientists' next breakthrough.

Abcam is leading the way with our range of recombinant antibodies, knockout-validated antibodies and knockout cell lines, all of which support improved reproducibility.

We are also planning to innovate the way in which we present recommended applications and species on our product datasheets, so that only applications & species that have been tested in our own labs, our suppliers or by selected trusted collaborators are covered by our Abpromise™ guarantee.

In preparation for this, we have started to update the applications & species that this product is Abpromise guaranteed for.

We are also updating the applications & species that this product has been “predicted to work with,” however this information is not covered by our Abpromise guarantee.

Applications & species from publications and Abreviews that have not been tested in our own labs or in those of our suppliers are not covered by the Abpromise guarantee.

Please check that this product meets your needs before purchasing. If you have any questions,

special requirements or concerns, please send us an inquiry and/or contact our Support team ahead of purchase. Recommended alternatives for this product can be found below, as well as customer reviews and Q&As.

## Properties

---

<b>Form</b>	Liquid
<b>Storage instructions</b>	Shipped at 4°C. Store at +4°C short term (1-2 weeks). Upon delivery aliquot. Store at -20°C or -80°C. Avoid freeze / thaw cycle.
<b>Storage buffer</b>	pH: 7.40 Preservative: 0.02% Sodium azide Constituent: PBS  Batches of this product that have a concentration < 1mg/ml may have BSA added as a stabilising agent. If you would like information about the formulation of a specific lot, please contact our scientific support team who will be happy to help.
<b>Purity</b>	Immunogen affinity purified
<b>Clonality</b>	Polyclonal
<b>Isotype</b>	IgG

## Applications

---

Our [Abpromise guarantee](#) covers the use of **ab90873** in the following tested applications.

The application notes include recommended starting dilutions; optimal dilutions/concentrations should be determined by the end user.

Application	Abreviews	Notes
WB		Use a concentration of 1 µg/ml. Detects a band of approximately 39 kDa (predicted molecular weight: 39 kDa).

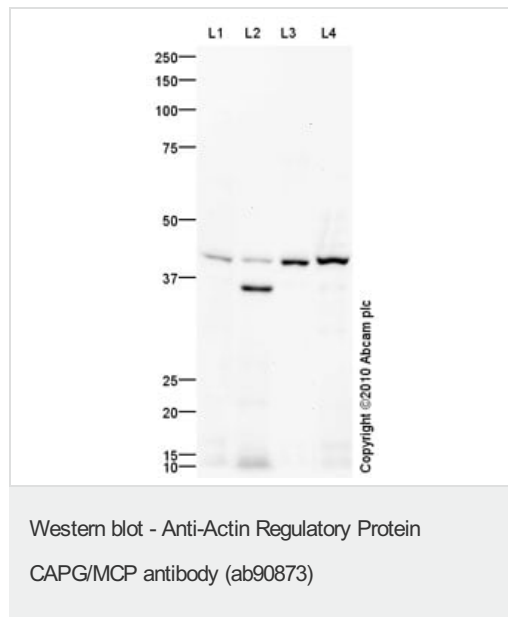
---

## Target

---

<b>Function</b>	Calcium-sensitive protein which reversibly blocks the barbed ends of actin filaments but does not sever preformed actin filaments. May play an important role in macrophage function. May play a role in regulating cytoplasmic and/or nuclear structures through potential interactions with actin. May bind DNA.
<b>Tissue specificity</b>	Macrophages and macrophage-like cells.
<b>Sequence similarities</b>	Belongs to the villin/gelsolin family. Contains 3 gelsolin-like repeats.
<b>Post-translational modifications</b>	The N-terminus is blocked.
<b>Cellular localization</b>	Cytoplasm. Nucleus. Melanosome. Identified by mass spectrometry in melanosome fractions from stage I to stage IV.

---



**All lanes :** Anti-Actin Regulatory Protein CAPG/MCP antibody (ab90873) at 1 µg/ml

**Lane 1 :** HL60 (Human promyelocytic leukemia cell line) Whole Cell Lysate

**Lane 2 :** U937 (Human leukemic monocyte lymphoma cell line) Whole Cell Lysate

**Lane 3 :** THP1 (Human acute monocytic leukemia cell line) Whole Cell Lysate

**Lane 4 :** RAW 264.7 (Mouse leukaemic monocyte macrophage cell line) Whole Cell Lysate

Lysates/proteins at 10 µg/ml per lane.

### Secondary

**All lanes :** Goat Anti-Rabbit IgG H&L (HRP) preadsorbed (ab97080) at 1/5000 dilution

Developed using the ECL technique.

Performed under reducing conditions.

**Predicted band size:** 39 kDa

**Observed band size:** 39 kDa

**Additional bands at:** 36 kDa. We are unsure as to the identity of these extra bands.

**Exposure time:** 8 minutes

**Please note:** All products are "FOR RESEARCH USE ONLY. NOT FOR USE IN DIAGNOSTIC PROCEDURES"

### Our Abpromise to you: Quality guaranteed and expert technical support

- Replacement or refund for products not performing as stated on the datasheet
- Valid for 12 months from date of delivery
- Response to your inquiry within 24 hours
- We provide support in Chinese, English, French, German, Japanese and Spanish
- Extensive multi-media technical resources to help you
- We investigate all quality concerns to ensure our products perform to the highest standards

If the product does not perform as described on this datasheet, we will offer a refund or replacement. For full details of the Abpromise,

please visit <https://www.abcam.com/abpromise> or contact our technical team.

## **Terms and conditions**

---

- Guarantee only valid for products bought direct from Abcam or one of our authorized distributors