




Product datasheet

Anti-Activin Receptor Type IIA/ACVR2A antibody ab231057

3 Images

Overview

Product name	Anti-Activin Receptor Type IIA/ACVR2A antibody
Description	Rabbit polyclonal to Activin Receptor Type IIA/ACVR2A
Host species	Rabbit
Tested applications	Suitable for: WB
Species reactivity	Reacts with: Cow, Human Predicted to work with: Mouse, Rat, Chicken 
Immunogen	Recombinant fragment (His-tag) corresponding to Cow Activin Receptor Type IIA/ACVR2A aa 192-325. (Expressed in E.coli). Sequence: LQLEVKARGRFGCVWKAQLLNEYVAVKIFPIQDKQS WQNEYEVYSLPGM KHENILQFIGAEKRGTSVDVDLWLITAFHEKGSLSDFLK ANVVSWNELCH IAETMARGLAYLHEDIPGLKDGHKPAISHRDIKS Database link: Q28043  Run BLAST with  Run BLAST with
Positive control	WB: Cow skeletal muscle lysate; HepG2 cell lysate; Recombinant cow Activin Receptor Type IIA/ACVR2A protein.
General notes	This product was previously labelled as Activin Receptor Type IIA

Properties

Form	Liquid
Storage instructions	Shipped at 4°C. Store at +4°C short term (1-2 weeks). Upon delivery aliquot. Store at -20°C long term. Avoid freeze / thaw cycle.
Storage buffer	pH: 7.40 Preservative: 0.02% Sodium azide Constituents: PBS, 50% Glycerol

Purity	Immunogen affinity purified
Purification notes	ab231057 was purified by antigen-specific affinity chromatography followed by Protein A affinity chromatography.
Clonality	Polyclonal
Isotype	IgG

Applications

Our [Abpromise guarantee](#) covers the use of **ab231057** in the following tested applications.

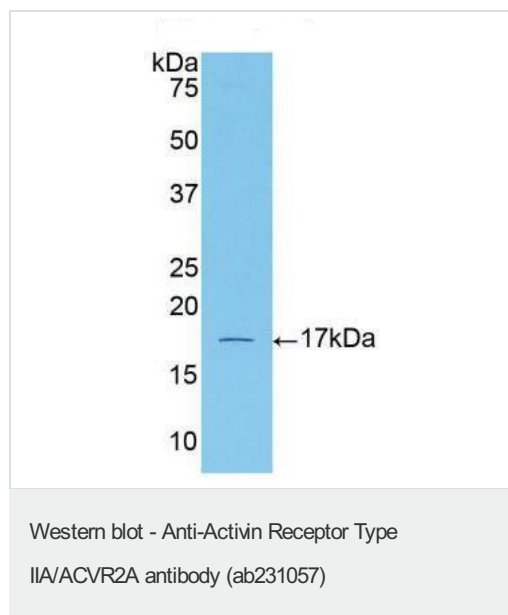
The application notes include recommended starting dilutions; optimal dilutions/concentrations should be determined by the end user.

Application	Abreviews	Notes
WB		Use a concentration of 0.2 - 2 µg/ml. Predicted molecular weight: 58 kDa.

Target

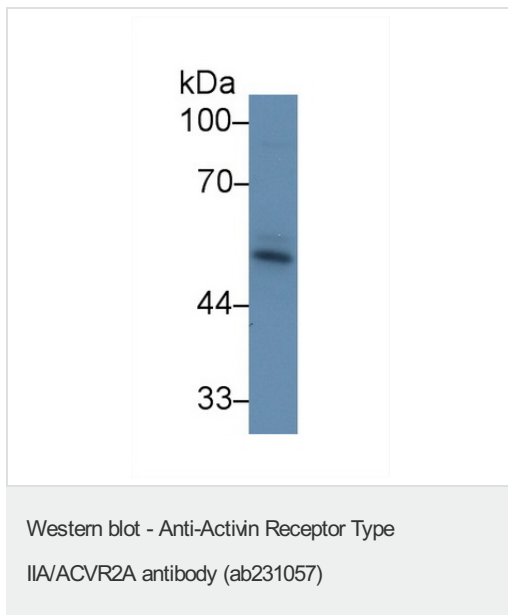
Function	On ligand binding, forms a receptor complex consisting of two type II and two type I transmembrane serine/threonine kinases. Type II receptors phosphorylate and activate type I receptors which autophosphorylate, then bind and activate SMAD transcriptional regulators. Receptor for activin A, activin B and inhibin A.
Sequence similarities	Belongs to the protein kinase superfamily. TKL Ser/Thr protein kinase family. TGFB receptor subfamily. Contains 1 protein kinase domain.
Cellular localization	Membrane.

Images



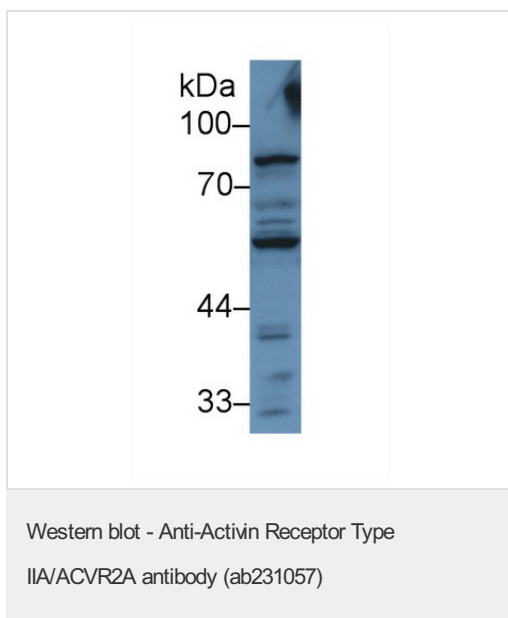
Anti-Activin Receptor Type IIA/ACVR2A antibody (ab231057) at 2 µg/ml + Recombinant cow Activin Receptor Type IIA/ACVR2A protein

Predicted band size: 58 kDa



Anti-Activin Receptor Type IIA/ACVR2A antibody (ab231057) at 1 $\mu\text{g/ml}$ + Cow skeletal muscle lysate

Predicted band size: 58 kDa



Anti-Activin Receptor Type IIA/ACVR2A antibody (ab231057) at 1 $\mu\text{g/ml}$ + HepG2 (human liver hepatocellular carcinoma cell line) cell lysate

Predicted band size: 58 kDa

Please note: All products are "FOR RESEARCH USE ONLY. NOT FOR USE IN DIAGNOSTIC PROCEDURES"

Our Abpromise to you: Quality guaranteed and expert technical support

- Replacement or refund for products not performing as stated on the datasheet
- Valid for 12 months from date of delivery
- Response to your inquiry within 24 hours
- We provide support in Chinese, English, French, German, Japanese and Spanish
- Extensive multi-media technical resources to help you
- We investigate all quality concerns to ensure our products perform to the highest standards

If the product does not perform as described on this datasheet, we will offer a refund or replacement. For full details of the Abpromise, please visit <https://www.abcam.com/abpromise> or contact our technical team.

Terms and conditions

- Guarantee only valid for products bought direct from Abcam or one of our authorized distributors