


Product datasheet

Anti-Activin Receptor Type IIA/ACVR2A antibody ab96793

1 References 2 Images

Overview

Product name	Anti-Activin Receptor Type IIA/ACVR2A antibody
Description	Rabbit polyclonal to Activin Receptor Type IIA/ACVR2A
Host species	Rabbit
Tested applications	Suitable for: WB, ICC/IF
Species reactivity	Reacts with: Human Predicted to work with: Mouse, Rat, Cow, Zebrafish 
Immunogen	Recombinant fragment corresponding to Human Activin Receptor Type IIA/ACVR2A aa 267-509. (AAH69707)
Positive control	HeLa or HepG2 whole cell lysate (ab7900) This antibody gave a positive result in IF/ICC when used in the following formaldehyde fixed cell lines: DU145.
General notes	This product was previously labelled as Activin Receptor Type IIA

Properties

Form	Liquid
Storage instructions	Shipped at 4°C. Upon delivery aliquot and store at -20°C or -80°C. Avoid repeated freeze / thaw cycles.
Storage buffer	pH: 7.00 Preservative: 0.01% Thimerosal (merthiolate) Constituents: 0.75% Glycine, 20% Glycerol, 1.21% Tris
Purity	Immunogen affinity purified
Clonality	Polyclonal
Isotype	IgG

Applications

Our [Abpromise guarantee](#) covers the use of **ab96793** in the following tested applications.

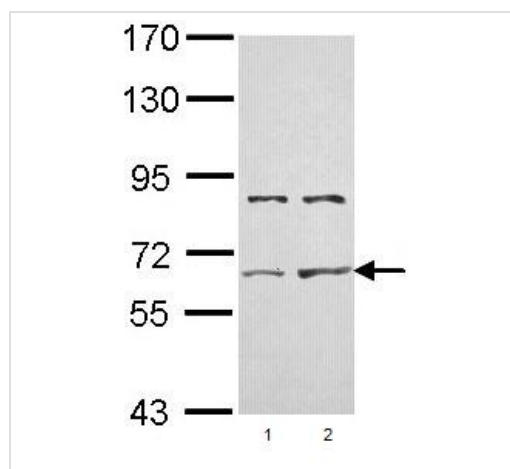
The application notes include recommended starting dilutions; optimal dilutions/concentrations should be determined by the end user.

Application	Abreviews	Notes
WB		1/5000 - 1/20000. Predicted molecular weight: 58 kDa.
ICC/IF		Use a concentration of 5 µg/ml.

Target

Function	On ligand binding, forms a receptor complex consisting of two type II and two type I transmembrane serine/threonine kinases. Type II receptors phosphorylate and activate type I receptors which autophosphorylate, then bind and activate SMAD transcriptional regulators. Receptor for activin A, activin B and inhibin A.
Sequence similarities	Belongs to the protein kinase superfamily. TKL Ser/Thr protein kinase family. TGFB receptor subfamily. Contains 1 protein kinase domain.
Cellular localization	Membrane.

Images



All lanes : Anti-Activin Receptor Type IIA/ACVR2A antibody (ab96793) at 1/10000 dilution

Lane 1 : HeLa whole cell lysate

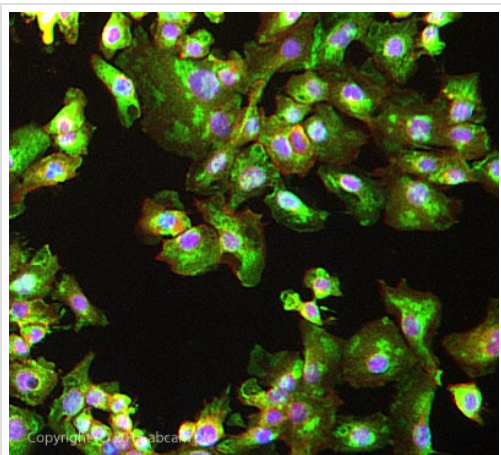
Lane 2 : Hep G2 whole cell lysate

Lysates/proteins at 30 µg per lane.

Predicted band size: 58 kDa

Western blot - Anti-Activin Receptor Type IIA/ACVR2A antibody (ab96793)

7.5% SDS PAGE



Immunocytochemistry/ Immunofluorescence - Anti-
Activin Receptor Type IIA/ACVR2A antibody
(ab96793)

ICC/IF image of ab96793 stained DU145 cells. The cells were 4% formaldehyde fixed (10 min) and then incubated in 1%BSA / 10% normal goat serum / 0.3M glycine in 0.1% PBS-Tween for 1h to permeabilise the cells and block non-specific protein-protein interactions. The cells were then incubated with the antibody ab96793 at 5µg/ml overnight at +4°C. The secondary antibody (green) was DyLight® 488 goat anti- rabbit (ab96899) IgG (H+L) used at a 1/1000 dilution for 1h. Alexa Fluor® 594 WGA was used to label plasma membranes (red) at a 1/200 dilution for 1h. DAPI was used to stain the cell nuclei (blue) at a concentration of 1.43µM.

Please note: All products are "FOR RESEARCH USE ONLY AND ARE NOT INTENDED FOR DIAGNOSTIC OR THERAPEUTIC USE"

Our Abpromise to you: Quality guaranteed and expert technical support

- Replacement or refund for products not performing as stated on the datasheet
- Valid for 12 months from date of delivery
- Response to your inquiry within 24 hours

- We provide support in Chinese, English, French, German, Japanese and Spanish
- Extensive multi-media technical resources to help you
- We investigate all quality concerns to ensure our products perform to the highest standards

If the product does not perform as described on this datasheet, we will offer a refund or replacement. For full details of the Abpromise, please visit <https://www.abcam.com/abpromise> or contact our technical team.

Terms and conditions

- Guarantee only valid for products bought direct from Abcam or one of our authorized distributors