




Product datasheet

Anti-ACY3 antibody ab197799

2 Images

Overview

<b>Product name</b>	Anti-ACY3 antibody
<b>Description</b>	Rabbit polyclonal to ACY3
<b>Host species</b>	Rabbit
<b>Tested applications</b>	<b>Suitable for:</b> IHC-P, WB
<b>Species reactivity</b>	<b>Reacts with:</b> Mouse, Human <b>Predicted to work with:</b> Rat 
<b>Immunogen</b>	<p>Fusion protein corresponding to Human ACY3 aa 1-319. Full length fusion protein. The protein fusion partner is GST.</p> <p>Sequence:</p> <p>MCSLPVPREPLRRVAVTGGTHGNEMSGVYLARHWLH            APAELQRASFSAVP            VLANPAATSGCRRYVDHDLNRTFTSSFLNSRPTDDP            YEVTRARELNQLL            GPKASGQAFDFVLDLHNTTANMGTCIAKSSHEVFAM            HLCRHLQLQYPEL            SCQVFLYQRSGEESYNLDSVAKNGLGLELGPQPQGV            LRADIFSRMRTLVA            TVLDFIELFNQGTAFPAFEMEAYRPVGVVDFPRTEAG            HLAGTVHPQLQDR            DFQPLQPGAPIFQMFSGEDLLYEGESTVYPVFINEAAY            YEKGVAFVQTEK FTFTVPAMPALTPAPSPAS</p> <p>Database link: <a href="#">Q96HD9</a></p> <p style="text-align: right;"> <a href="#">Run BLAST with</a>       <a href="#">Run BLAST with</a></p>
<b>Positive control</b>	Mouse kidney tissue lysate; Human cervical cancer tissue

Properties

<b>Form</b>	Liquid
<b>Storage instructions</b>	Shipped at 4°C. Store at +4°C short term (1-2 weeks). Upon delivery aliquot. Store at -20°C long term. Avoid freeze / thaw cycle.
<b>Storage buffer</b>	pH: 7.3

Preservative: 0.05% Sodium azide  
Constituents: 49% PBS, 50% Glycerol

**Purity** Immunogen affinity purified  
**Clonality** Polyclonal  
**Isotype** IgG

## Applications

Our [Abpromise guarantee](#) covers the use of **ab197799** in the following tested applications.

The application notes include recommended starting dilutions; optimal dilutions/concentrations should be determined by the end user.

Application	Abreviews	Notes
IHC-P		1/25 - 1/100.
WB		1/500 - 1/2000. Predicted molecular weight: 35 kDa.

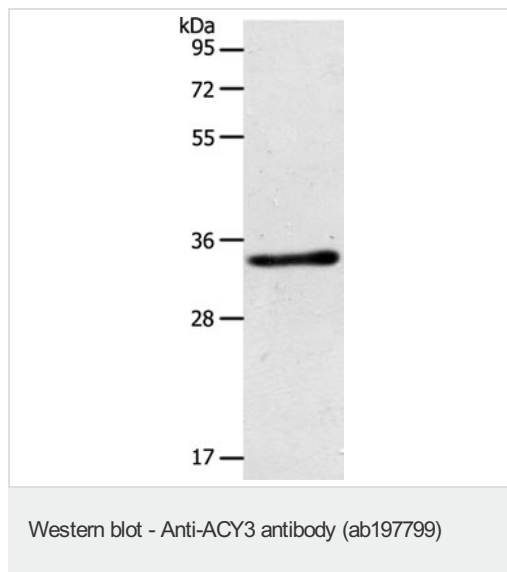
## Target

**Function** Plays an important role in deacetylating mercapturic acids in kidney proximal tubules.

**Sequence similarities** Belongs to the AspA/AstE family. Aspartoacylase subfamily.

**Cellular localization** Apical cell membrane. Cytoplasm. Predominantly localized in the apical membrane of cells in the S1 segment. In the proximal straight tubules (S2 and S3 segments) is expressed diffusely throughout the cytoplasm.

## Images

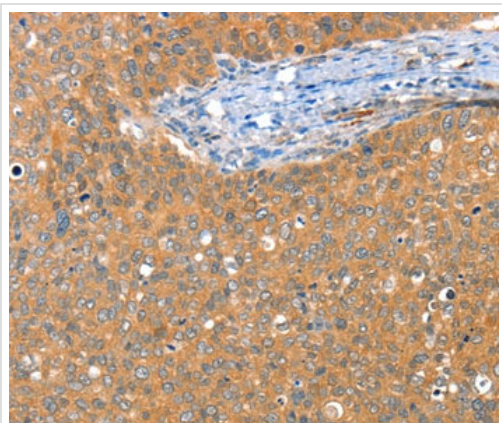


Anti-ACY3 antibody (ab197799) at 1/500 dilution + mouse kidney tissue lysate at 40 µg

**Predicted band size:** 35 kDa

**Exposure time:** 5 seconds

**Gel:** 10%SDS-PAGE



Immunohistochemical analysis of paraffin-embedded Human cervical cancer tissue, labeling ACY3 with ab197799 at 1/25 dilution.

Immunohistochemistry (Formalin/PFA-fixed paraffin-embedded sections) - Anti-ACY3 antibody (ab197799)

**Please note:** All products are "FOR RESEARCH USE ONLY. NOT FOR USE IN DIAGNOSTIC PROCEDURES"

### Our Abpromise to you: Quality guaranteed and expert technical support

---

- Replacement or refund for products not performing as stated on the datasheet
- Valid for 12 months from date of delivery
- Response to your inquiry within 24 hours
- We provide support in Chinese, English, French, German, Japanese and Spanish
- Extensive multi-media technical resources to help you
- We investigate all quality concerns to ensure our products perform to the highest standards

If the product does not perform as described on this datasheet, we will offer a refund or replacement. For full details of the Abpromise, please visit <https://www.abcam.com/abpromise> or contact our technical team.

### Terms and conditions

---

- Guarantee only valid for products bought direct from Abcam or one of our authorized distributors