




Product datasheet

Anti-ADA antibody ab175310

[1 References](#) [2 Images](#)

Overview

Product name	Anti-ADA antibody
Description	Rabbit polyclonal to ADA
Host species	Rabbit
Tested applications	Suitable for: ICC/IF, IHC-P, WB
Species reactivity	Reacts with: Mouse, Rat, Human Predicted to work with: Cow 
Immunogen	Recombinant full length protein corresponding to Human ADA aa 1-363. Sequence: MAQTPAFDKPKVELHVHLDGSIKPETILYGRRRGIALP ANTAEGLLNVI GMDKPLTLPDFLAKFDYMPAIAAGCREAIKRIAYEFVEM KAKEGVVYVEV RYSPHLLANSKVEPIPWNAEGDLTPDEVVALVGQGL QEGERDFGVKARS ILCCMRHQPNWSPKVVVELCKKYQQQTVVAIDLAGEDETI PGSSLLPGHVQA YQEAVKSGIHRTVHAGEVGSAEVVKEAVDILKTERLGH GYHTLEDQALYN RLRQENMHFEICPWSSYLTGAWKPDTEHAVIRLKNQDQ ANYSLNTDDPLIF KSTLDDTDYQMTKRDMGFTEEEFKRLNINAAKSSFLPE DEKRELLDLLYKA YGMPPSASAGQNL Database link: P00813 <div style="text-align: right;">  Run BLAST with  Run BLAST with </div>
Positive control	Recombinant human ADA protein (ab168085) can be used as a positive control in WB. HeLa, Jurkat, DU145, liver and intestine lysates.

Properties

Form	Liquid
Storage instructions	Shipped at 4°C. Store at +4°C short term (1-2 weeks). Upon delivery aliquot. Store at -20°C long term. Avoid freeze / thaw cycle.

Storage buffer	pH: 7.30 Preservative: 0.02% Sodium azide Constituents: 50% Glycerol, 49% PBS
Purity	Protein A purified
Clonality	Polyclonal
Isotype	IgG

Applications

Our [Abpromise guarantee](#) covers the use of **ab175310** in the following tested applications.

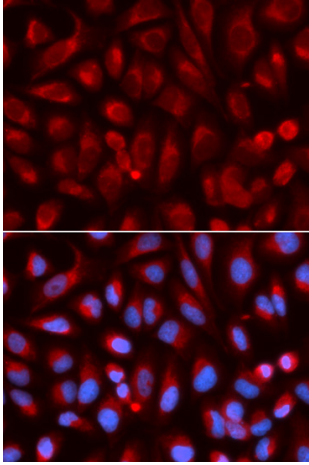
The application notes include recommended starting dilutions; optimal dilutions/concentrations should be determined by the end user.

Application	Abreviews	Notes
ICC/IF		Use at an assay dependent concentration.
IHC-P		1/50 - 1/200. ab171870 - Rabbit polyclonal IgG, is suitable for use as an isotype control with this antibody.
WB		1/500 - 1/2000. Predicted molecular weight: 41 kDa.

Target

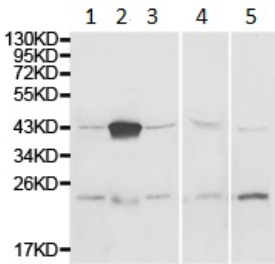
Function	Catalyzes the hydrolytic deamination of adenosine and 2-deoxyadenosine. Plays an important role in purine metabolism and in adenosine homeostasis. Modulates signaling by extracellular adenosine, and so contributes indirectly to cellular signaling events. Acts as a positive regulator of T-cell coactivation, by binding DPP4. Its interaction with DPP4 regulates lymphocyte-epithelial cell adhesion.
Tissue specificity	Found in all tissues, occurs in large amounts in T-lymphocytes and, at the time of weaning, in gastrointestinal tissues.
Involvement in disease	Defects in ADA are the cause of severe combined immunodeficiency autosomal recessive T-cell-negative/B-cell-negative/NK-cell-negative due to adenosine deaminase deficiency (ADASCID) [MIM:102700]. SCID refers to a genetically and clinically heterogeneous group of rare congenital disorders characterized by impairment of both humoral and cell-mediated immunity, leukopenia, and low or absent antibody levels. Patients with SCID present in infancy with recurrent, persistent infections by opportunistic organisms. The common characteristic of all types of SCID is absence of T-cell-mediated cellular immunity due to a defect in T-cell development. ADA-SCID is an autosomal recessive form accounting for about 50% of non-X-linked SCIDs. ADA deficiency has been diagnosed in chronically ill teenagers and adults (late or adult onset). Population and newborn screening programs have also identified several healthy individuals with normal immunity who have partial ADA deficiency.
Sequence similarities	Belongs to the adenosine and AMP deaminases family.
Cellular localization	Cell membrane. Cell junction. Cytoplasmic vesicle lumen. Cytoplasm. Colocalized with DPP4 at the cell junction in lymphocyte-epithelial cell adhesion.

Images



Immunocytochemistry/Immunofluorescence analysis of U2OS cells using ab175310. Blue DAPI for nuclear staining.

Immunocytochemistry/ Immunofluorescence - Anti-ADA antibody (ab175310)



All lanes : Anti-ADA antibody (ab175310) at 1/500 dilution

Lane 1 : HeLa cell lysate

Lane 2 : Jurkat cell lysate

Lane 3 : DU145 cell lysate

Lane 4 : Liver cell lysate

Lane 5 : Intestine cell lysate

Predicted band size: 41 kDa

Western blot - Anti-ADA antibody (ab175310)

Please note: All products are "FOR RESEARCH USE ONLY AND ARE NOT INTENDED FOR DIAGNOSTIC OR THERAPEUTIC USE"

Our Abpromise to you: Quality guaranteed and expert technical support

- Replacement or refund for products not performing as stated on the datasheet
- Valid for 12 months from date of delivery
- Response to your inquiry within 24 hours
- We provide support in Chinese, English, French, German, Japanese and Spanish
- Extensive multi-media technical resources to help you
- We investigate all quality concerns to ensure our products perform to the highest standards

If the product does not perform as described on this datasheet, we will offer a refund or replacement. For full details of the Abpromise, please visit <https://www.abcam.com/abpromise> or contact our technical team.

Terms and conditions

- Guarantee only valid for products bought direct from Abcam or one of our authorized distributors

