


Product datasheet

Anti-ADAM9 antibody ab227600

2 Images

Overview

Product name	Anti-ADAM9 antibody
Description	Rabbit polyclonal to ADAM9
Host species	Rabbit
Tested applications	Suitable for: WB
Species reactivity	Reacts with: Mouse, Human Predicted to work with: Rat, Dog 
Immunogen	Recombinant fragment within Human ADAM9 (internal sequence). The exact sequence is proprietary. Database link: Q13443
Positive control	WB: HEK-293T, A431, HeLa, HepG2, Neuro-2a, C8D30, NIH/3T3, RAW 264.7 and C2C12 whole cell extracts.
General notes	<p>Reproducibility is key to advancing scientific discovery and accelerating scientists' next breakthrough.</p> <p>Abcam is leading the way with our range of recombinant antibodies, knockout-validated antibodies and knockout cell lines, all of which support improved reproducibility.</p> <p>We are also planning to innovate the way in which we present recommended applications and species on our product datasheets, so that only applications & species that have been tested in our own labs, our suppliers or by selected trusted collaborators are covered by our Abpromise™ guarantee.</p> <p>In preparation for this, we have started to update the applications & species that this product is Abpromise guaranteed for.</p> <p>We are also updating the applications & species that this product has been “predicted to work with,” however this information is not covered by our Abpromise guarantee.</p> <p>Applications & species from publications and Abreviews that have not been tested in our own labs or in those of our suppliers are not covered by the Abpromise guarantee.</p> <p>Please check that this product meets your needs before purchasing. If you have any questions, special requirements or concerns, please send us an inquiry and/or contact our Support team ahead of purchase. Recommended alternatives for this product can be found below, as well as customer reviews and Q&As.</p>

Properties

Properties

Form	Liquid
Storage instructions	Shipped at 4°C. Store at +4°C short term (1-2 weeks). Upon delivery aliquot. Store at -20°C long term. Avoid freeze / thaw cycle.
Storage buffer	pH: 7.00 Preservative: 0.025% Proclin 300 Constituents: 79% PBS, 20% Glycerol (glycerin, glycerine)
Purity	Immunogen affinity purified
Clonality	Polyclonal
Isotype	IgG

Applications

Our [Abpromise guarantee](#) covers the use of **ab227600** in the following tested applications.

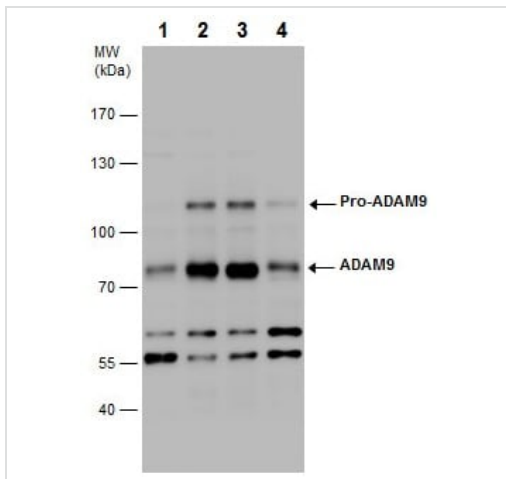
The application notes include recommended starting dilutions; optimal dilutions/concentrations should be determined by the end user.

Application	Abreviews	Notes
WB		1/500 - 1/3000. Predicted molecular weight: 91 kDa.

Target

Relevance	ADAM9 encodes disintegrin and metalloprotease (ADAM) domain 9, which is a member of the ADAM protein family. Members of this family are membrane- anchored proteins structurally related to snake venom disintegrins, and have been implicated in a variety of biologic processes involving cell- cell and cell-matrix interactions, including fertilization, muscle development, and neurogenesis. The member encoded by this gene interacts with SH3 domain-containing proteins, binds mitotic arrest deficient 2 beta protein, and is also involved in TPA-induced ectodomain shedding of membrane-anchored heparin-binding EGF-like growth factor.
Cellular localization	Isoform 1: Cell membrane; single-pass type I membrane protein. Isoform 2: Secreted protein.

Images



Western blot - Anti-ADAM9 antibody (ab227600)

All lanes : Anti-ADAM9 antibody (ab227600) at 1/1000 dilution

Lane 1 : HEK-293T (human epithelial cell line from embryonic kidney transformed with large T antigen) whole cell extract

Lane 2 : A431 (human epidermoid carcinoma cell line) whole cell extract

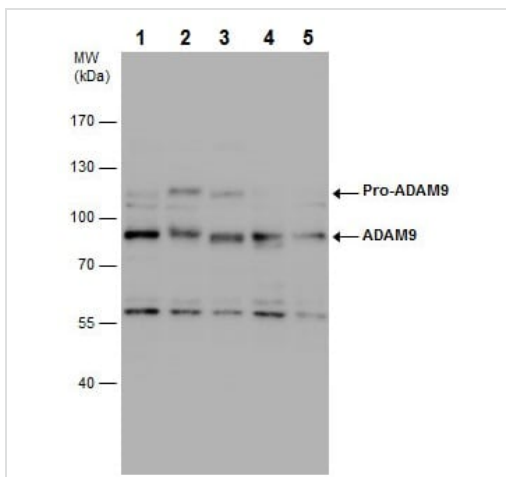
Lane 3 : HeLa (human epithelial cell line from cervix adenocarcinoma) whole cell extract

Lane 4 : HepG2 (human liver hepatocellular carcinoma cell line) whole cell extract

Lysates/proteins at 30 µg per lane.

Predicted band size: 91 kDa

7.5% SDS-PAGE gel.



Western blot - Anti-ADAM9 antibody (ab227600)

All lanes : Anti-ADAM9 antibody (ab227600) at 1/1000 dilution

Lane 1 : Neuro-2a (mouse neuroblastoma cell line) whole cell extract

Lane 2 : C8D30 whole cell extract

Lane 3 : NIH/3T3 (mouse embryo fibroblast cell line) whole cell extract

Lane 4 : RAW 264.7 (mouse macrophage cell line transformed with Abelson murine leukemia virus) whole cell extract

Lane 5 : C2C12 (mouse myoblast cell line) whole cell extract

Lysates/proteins at 30 µg per lane.

Predicted band size: 91 kDa

7.5% SDS-PAGE gel.

Please note: All products are "FOR RESEARCH USE ONLY. NOT FOR USE IN DIAGNOSTIC PROCEDURES"

Our Abpromise to you: Quality guaranteed and expert technical support

- Replacement or refund for products not performing as stated on the datasheet

- Valid for 12 months from date of delivery
- Response to your inquiry within 24 hours

- We provide support in Chinese, English, French, German, Japanese and Spanish
- Extensive multi-media technical resources to help you
- We investigate all quality concerns to ensure our products perform to the highest standards

If the product does not perform as described on this datasheet, we will offer a refund or replacement. For full details of the Abpromise, please visit <https://www.abcam.com/abpromise> or contact our technical team.

Terms and conditions

- Guarantee only valid for products bought direct from Abcam or one of our authorized distributors