

Product datasheet

Anti-ADAMDEC1 antibody - Aminoterminal end  
ab95267

1 Image

Overview

<b>Product name</b>	Anti-ADAMDEC1 antibody - Aminoterminal end
<b>Description</b>	Rabbit polyclonal to ADAMDEC1 - Aminoterminal end
<b>Host species</b>	Rabbit
<b>Tested applications</b>	<b>Suitable for:</b> WB
<b>Species reactivity</b>	<b>Reacts with:</b> Human
<b>Immunogen</b>	KLH conjugated synthetic peptide selected from the N-terminal region of human ADAMDEC1.
<b>Positive control</b>	MCF-7 cell lysate

Properties

<b>Form</b>	Liquid
<b>Storage instructions</b>	Shipped at 4°C. Upon delivery aliquot and store at -20°C. Avoid freeze / thaw cycles.
<b>Storage buffer</b>	Preservative: 0.09% Sodium azide Constituent: PBS
<b>Purity</b>	Ammonium Sulphate Precipitation
<b>Purification notes</b>	Prepared by Saturated Ammonium Sulfate (SAS) precipitation followed by dialysis against PBS.
<b>Clonality</b>	Polyclonal
<b>Isotype</b>	IgG

Applications

Our [Abpromise guarantee](#) covers the use of **ab95267** in the following tested applications.

The application notes include recommended starting dilutions; optimal dilutions/concentrations should be determined by the end user.

Application	Abreviews	Notes
WB		1/50 - 1/100. Detects a band of approximately 53 kDa.

## Target

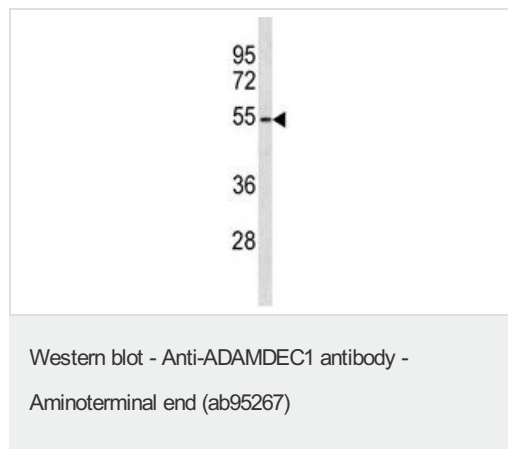
---

<b>Function</b>	May play an important role in the control of the immune response and during pregnancy.
<b>Tissue specificity</b>	Expressed highly in the small intestine and appendix, moderately in lymph node, mucosal lining of the colon, thymus, spleen and very weakly in the bone marrow. Predominantly expressed in dendritic cells (DC) of the germinal center. Weakly expressed in monocyte and highly expressed in macrophage. Absent in immature DC.
<b>Sequence similarities</b>	Contains 1 disintegrin domain. Contains 1 peptidase M12B domain.
<b>Cellular localization</b>	Secreted.

---

## Images

---



Anti-ADAMDEC1 antibody - Aminoterminal end (ab95267) at 1/50 dilution + MCF-7 cell line lysate at 35 µg

**Observed band size:** 53 kDa

[why is the actual band size different from the predicted?](#)

**Please note:** All products are "FOR RESEARCH USE ONLY AND ARE NOT INTENDED FOR DIAGNOSTIC OR THERAPEUTIC USE"

## Our Abpromise to you: Quality guaranteed and expert technical support

---

- Replacement or refund for products not performing as stated on the datasheet
- Valid for 12 months from date of delivery
- Response to your inquiry within 24 hours
- We provide support in Chinese, English, French, German, Japanese and Spanish
- Extensive multi-media technical resources to help you
- We investigate all quality concerns to ensure our products perform to the highest standards

If the product does not perform as described on this datasheet, we will offer a refund or replacement. For full details of the Abpromise, please visit <https://www.abcam.com/abpromise> or contact our technical team.

## Terms and conditions

---

- Guarantee only valid for products bought direct from Abcam or one of our authorized distributors