

Product datasheet

Anti-ADAMTS1 antibody [OTI1B4] ab236497

1 Image

Overview

Product name	Anti-ADAMTS1 antibody [OTI1B4]
Description	Mouse monoclonal [OTI1B4] to ADAMTS1
Host species	Mouse
Tested applications	Suitable for: WB
Species reactivity	Reacts with: Human Predicted to work with: Mouse, Rat
Immunogen	<p>Recombinant fragment corresponding to Human ADAMTS1 aa 412-644. Produced in E.coli (NP_008919).</p> <p>Sequence:</p> <pre>DDAKQCASLNGVNQDSHMMASMLSNLDHSQPWSPCSA YMITSFLDNGHGE CLMDKPQNPIQLPGDLPGTSYDANRQCQFTFGEDSKHCP DAASTCSTLWC TGTSGGVLVCQTKHFPWADGTSCGEGKWCINGKCVNKT DRKHFDTPFHGS WGMWGPWGDCSRTC GGGVQYTMRECDNPV PKNGGKY CEGKRVRYRSCNLE DCPDNNGKTFREEQCEAHNEFSKASFGSGPAVE</pre> <p>Database link: Q9UHI8 Run BLAST with Run BLAST with</p>
Positive control	WB: pCMV6-ENTRY ADAMTS1 cDNA transfected HEK-293T cell lysate.
General notes	<p>Clone OTI1B4 (formerly 1B4).</p> <p>Reproducibility is key to advancing scientific discovery and accelerating scientists' next breakthrough.</p> <p>Abcam is leading the way with our range of recombinant antibodies, knockout-validated antibodies and knockout cell lines, all of which support improved reproducibility.</p> <p>We are also planning to innovate the way in which we present recommended applications and species on our product datasheets, so that only applications & species that have been tested in our own labs, our suppliers or by selected trusted collaborators are covered by our Abpromise™ guarantee.</p> <p>In preparation for this, we have started to update the applications & species that this product is</p>

Abpromise guaranteed for.

We are also updating the applications & species that this product has been “predicted to work with,” however this information is not covered by our Abpromise guarantee.

Applications & species from publications and Abreviews that have not been tested in our own labs or in those of our suppliers are not covered by the Abpromise guarantee.

Please check that this product meets your needs before purchasing. If you have any questions, special requirements or concerns, please send us an inquiry and/or contact our Support team ahead of purchase. Recommended alternatives for this product can be found below, as well as customer reviews and Q&As.

Properties

Form	Liquid
Storage instructions	Shipped at 4°C. Store at +4°C short term (1-2 weeks). Upon delivery aliquot. Store at -20°C long term. Avoid freeze / thaw cycle.
Storage buffer	pH: 7.30 Preservative: 0.02% Sodium azide Constituents: PBS, 1% BSA, 50% Glycerol
Purity	Affinity purified
Purification notes	Purified from cell culture supernatant.
Clonality	Monoclonal
Clone number	OT11B4
Isotype	IgG1

Applications

Our [Abpromise guarantee](#) covers the use of **ab236497** in the following tested applications.

The application notes include recommended starting dilutions; optimal dilutions/concentrations should be determined by the end user.

Application	Abreviews	Notes
WB		1/2000. Predicted molecular weight: 105 kDa.

Target

Function	Cleaves aggrecan, a cartilage proteoglycan, and may be involved in its turnover (By similarity). Has angiogenic inhibitor activity. Active metalloprotease, which may be associated with various inflammatory processes as well as development of cancer cachexia. May play a critical role in follicular rupture.
Sequence similarities	Contains 1 disintegrin domain. Contains 1 peptidase M12B domain. Contains 3 TSP type-1 domains.
Domain	The spacer domain and the TSP type-1 domains are important for a tight interaction with the extracellular matrix.

The conserved cysteine present in the cysteine-switch motif binds the catalytic zinc ion, thus inhibiting the enzyme. The dissociation of the cysteine from the zinc ion upon the activation-peptide release activates the enzyme.

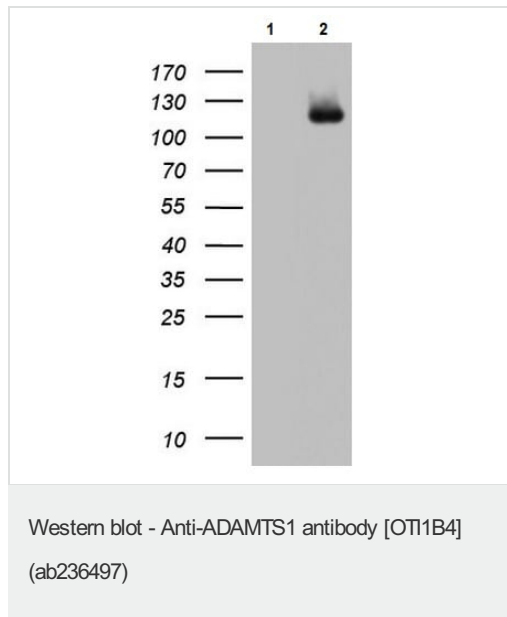
Post-translational modifications

The precursor is cleaved by a furin endopeptidase.

Cellular localization

Secreted > extracellular space > extracellular matrix.

Images



All lanes : Anti-ADAMTS1 antibody [OT11B4] (ab236497) at 1/2000 dilution

Lane 1 : pCMV6-ENTRY control cDNA transfected HEK-293T (human epithelial cell line from embryonic kidney transformed with large T antigen) cell lysate

Lane 2 : pCMV6-ENTRY ADAMTS1 cDNA transfected HEK-293T cell lysate

Lysates/proteins at 5 µg per lane.

Predicted band size: 105 kDa

Please note: All products are "FOR RESEARCH USE ONLY. NOT FOR USE IN DIAGNOSTIC PROCEDURES"

Our Abpromise to you: Quality guaranteed and expert technical support

- Replacement or refund for products not performing as stated on the datasheet
- Valid for 12 months from date of delivery
- Response to your inquiry within 24 hours
- We provide support in Chinese, English, French, German, Japanese and Spanish
- Extensive multi-media technical resources to help you
- We investigate all quality concerns to ensure our products perform to the highest standards

If the product does not perform as described on this datasheet, we will offer a refund or replacement. For full details of the Abpromise, please visit <https://www.abcam.com/abpromise> or contact our technical team.

Terms and conditions

- Guarantee only valid for products bought direct from Abcam or one of our authorized distributors