

## Product datasheet

# Anti-Adenine Nucleotide Translocase 1/ANT 1 antibody ab220408

3 Images

### Overview

<b>Product name</b>	Anti-Adenine Nucleotide Translocase 1/ANT 1 antibody
<b>Description</b>	Rabbit polyclonal to Adenine Nucleotide Translocase 1/ANT 1
<b>Host species</b>	Rabbit
<b>Tested applications</b>	<b>Suitable for:</b> ICC/IF, WB
<b>Species reactivity</b>	<b>Reacts with:</b> Human <b>Predicted to work with:</b> Mouse, Rat
<b>Immunogen</b>	Recombinant fragment corresponding to Human Adenine Nucleotide Translocase 1/ANT 1 aa 19-46. Sequence: AAVSKTAVAPIERVKLLLQVQHASKQIS  Database link: <a href="#">P12235</a>  <a href="#">Run BLAST with</a> <a href="#">Run BLAST with</a>
<b>Positive control</b>	RT-4 and U-251 MG cell lysates; PC-3 cells.
<b>General notes</b>	Previously labelled as Adenine Nucleotide Translocase 1.

Reproducibility is key to advancing scientific discovery and accelerating scientists' next breakthrough.

Abcam is leading the way with our range of recombinant antibodies, knockout-validated antibodies and knockout cell lines, all of which support improved reproducibility.

We are also planning to innovate the way in which we present recommended applications and species on our product datasheets, so that only applications & species that have been tested in our own labs, our suppliers or by selected trusted collaborators are covered by our Abpromise™ guarantee.

In preparation for this, we have started to update the applications & species that this product is Abpromise guaranteed for.

We are also updating the applications & species that this product has been “predicted to work with,” however this information is not covered by our Abpromise guarantee.

Applications & species from publications and Abreviews that have not been tested in our own labs or in those of our suppliers are not covered by the Abpromise guarantee.

Please check that this product meets your needs before purchasing. If you have any questions,

special requirements or concerns, please send us an inquiry and/or contact our Support team ahead of purchase. Recommended alternatives for this product can be found below, as well as customer reviews and Q&As.

## Properties

---

<b>Form</b>	Liquid
<b>Storage instructions</b>	Shipped at 4°C. Store at +4°C short term (1-2 weeks). Upon delivery aliquot. Store at -20°C long term. Avoid freeze / thaw cycle.
<b>Storage buffer</b>	pH: 7.20 Preservative: 0.02% Sodium azide Constituents: 40% Glycerol (glycerin, glycerine), 59% PBS
<b>Purity</b>	Immunogen affinity purified
<b>Clonality</b>	Polyclonal
<b>Isotype</b>	IgG

## Applications

---

Our [Abpromise guarantee](#) covers the use of **ab220408** in the following tested applications.

The application notes include recommended starting dilutions; optimal dilutions/concentrations should be determined by the end user.

Application	Abreviews	Notes
ICC/IF		Use a concentration of 0.25 - 2 µg/ml. Fixation/Permeabilization: PFA/Triton X-100.
WB		Use a concentration of 0.04 - 0.4 µg/ml. Predicted molecular weight: 33 kDa.

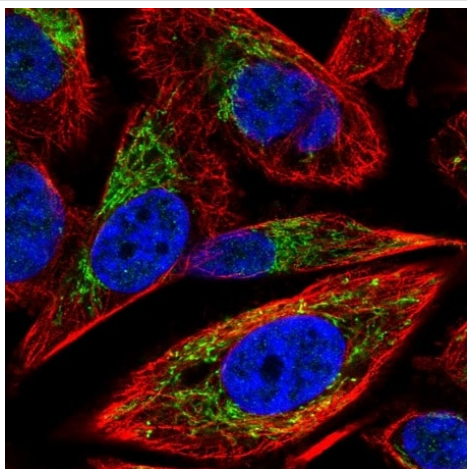
## Target

---

<b>Function</b>	Catalyzes the exchange of ADP and ATP across the mitochondrial inner membrane.
<b>Involvement in disease</b>	Defects in SLC25A4 are a cause of progressive external ophthalmoplegia with mitochondrial DNA deletions autosomal dominant type 2 (PEOA2) [MIM:609283]. Progressive external ophthalmoplegia is characterized by progressive weakness of ocular muscles and levator muscle of the upper eyelid. In a minority of cases, it is associated with skeletal myopathy, which predominantly involves axial or proximal muscles and which causes abnormal fatigability and even permanent muscle weakness. Ragged-red fibers and atrophy are found on muscle biopsy. A large proportion of chronic ophthalmoplegias are associated with other symptoms, leading to a multisystemic pattern of this disease. Additional symptoms are variable, and may include cataracts, hearing loss, sensory axonal neuropathy, ataxia, depression, hypogonadism, and parkinsonism.
<b>Sequence similarities</b>	Belongs to the mitochondrial carrier family. Contains 3 Solcar repeats.
<b>Cellular localization</b>	Mitochondrion inner membrane.

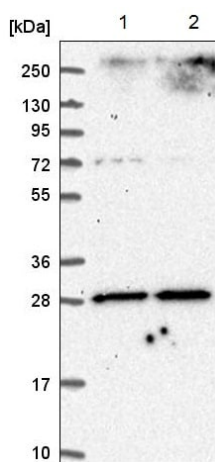
---

## Images



Immunofluorescent analysis of PFA-fixed, Triton X-100 permeabilized PC-3 cells labeling Adenine Nucleotide Translocator 2 with ab220408 at 4 µg/ml (green).

Immunocytochemistry/ Immunofluorescence - Anti-Adenine Nucleotide Translocase 1/ANT 1 antibody (ab220408)



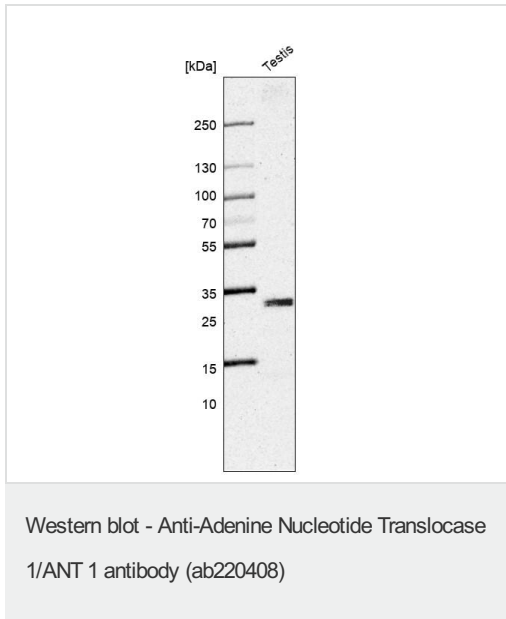
**All lanes** : Anti-Adenine Nucleotide Translocase 1/ANT 1 antibody (ab220408) at 1/100 dilution

**Lane 1** : RT-4 cell lysate

**Lane 2** : U-251 MG cell lysate

**Predicted band size:** 33 kDa

Western blot - Anti-Adenine Nucleotide Translocase 1/ANT 1 antibody (ab220408)



Anti-Adenine Nucleotide Translocase 1/ANT 1 antibody (ab220408) at 0.4  $\mu$ g + Testis tissue lysate

**Predicted band size:** 33 kDa

**Please note:** All products are "FOR RESEARCH USE ONLY. NOT FOR USE IN DIAGNOSTIC PROCEDURES"

### Our Abpromise to you: Quality guaranteed and expert technical support

---

- Replacement or refund for products not performing as stated on the datasheet
- Valid for 12 months from date of delivery
- Response to your inquiry within 24 hours
- We provide support in Chinese, English, French, German, Japanese and Spanish
- Extensive multi-media technical resources to help you
- We investigate all quality concerns to ensure our products perform to the highest standards

If the product does not perform as described on this datasheet, we will offer a refund or replacement. For full details of the Abpromise, please visit <https://www.abcam.com/abpromise> or contact our technical team.

### Terms and conditions

---

- Guarantee only valid for products bought direct from Abcam or one of our authorized distributors