

Product datasheet

Anti-ADH7 antibody ab236767

4 Images

Overview

<b>Product name</b>	Anti-ADH7 antibody
<b>Description</b>	Rabbit polyclonal to ADH7
<b>Host species</b>	Rabbit
<b>Tested applications</b>	<b>Suitable for:</b> IHC-P, WB
<b>Species reactivity</b>	<b>Reacts with:</b> Mouse, Human
<b>Immunogen</b>	<p>Recombinant full length protein corresponding to Human ADH7 aa 1-386. Sequence:</p> <p>MFAEIQIQDKDRMGTAGKVIKCKAAVLWEQKQPFSIEEIEV          APPKTKEVR          IKLATGICRTDDHVIKGTMVSKFPVIVGHEATGIVESIGEGV          TTVKPGD          KVIPLFLPQCRECNACRNPDGNLICIRSDITGRGVLDGTRR          FTCKGKPVH          HFMNTSTFTEYTVVDESSVAKIDDAAPPEKVCLIGCGFST          GYGAAVKTGK          VKPGSTCVVFGGGLSVIMGCKSAGASRIIGIDLNKDKF          EKAMAVGAT          ECISPKDSTKPISEVLSEMTGNNVGYTFEVIHLETMIDALA          SCHMNYGT          SVVVGVPSSAKMLTYDPMLLFTGRTWKGCVFGGLKSRD          DVPKLVTEFLAK          KFDLDQLITHVLPFKKISEGFELLNSGQSIRTVLTF</p>

Database link: [P40394](#)

 [Run BLAST with](#)

 [Run BLAST with](#)

**Positive control** WB: Mouse liver tissue lysate. IHC-P: Human lung, lung cancer and gastric cancer tissues.

**General notes**

Reproducibility is key to advancing scientific discovery and accelerating scientists' next breakthrough.

Abcam is leading the way with our range of recombinant antibodies, knockout-validated antibodies and knockout cell lines, all of which support improved reproducibility.

We are also planning to innovate the way in which we present recommended applications and species on our product datasheets, so that only applications & species that have been tested in our own labs, our suppliers or by selected trusted collaborators are covered by our Abpromise™

guarantee.

In preparation for this, we have started to update the applications & species that this product is Abpromise guaranteed for.

We are also updating the applications & species that this product has been “predicted to work with,” however this information is not covered by our Abpromise guarantee.

Applications & species from publications and Abreviews that have not been tested in our own labs or in those of our suppliers are not covered by the Abpromise guarantee.

Please check that this product meets your needs before purchasing. If you have any questions, special requirements or concerns, please send us an inquiry and/or contact our Support team ahead of purchase. Recommended alternatives for this product can be found below, as well as customer reviews and Q&As.

## Properties

---

<b>Form</b>	Liquid
<b>Storage instructions</b>	Shipped at 4°C. Store at +4°C short term (1-2 weeks). Upon delivery aliquot. Store at -20°C long term. Avoid freeze / thaw cycle.
<b>Storage buffer</b>	pH: 7.40 Constituents: 50% Glycerol (glycerin, glycerine), PBS, 0.03% Proclin 300
<b>Purity</b>	Protein G purified
<b>Purification notes</b>	Purity >95%
<b>Clonality</b>	Polyclonal
<b>Isotype</b>	IgG

## Applications

---

Our [Abpromise guarantee](#) covers the use of **ab236767** in the following tested applications.

The application notes include recommended starting dilutions; optimal dilutions/concentrations should be determined by the end user.

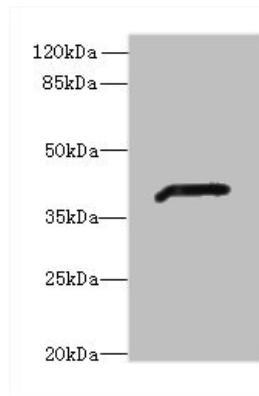
Application	Abreviews	Notes
IHC-P		1/20 - 1/200.
WB		1/1000 - 1/5000. Predicted molecular weight: 41 kDa.

## Target

---

**Relevance** This gene encodes class IV alcohol dehydrogenase 7 mu or sigma subunit, which is a member of the alcohol dehydrogenase family. Members of this family metabolize a wide variety of substrates, including ethanol, retinol, other aliphatic alcohols, hydroxysteroids, and lipid peroxidation products. The enzyme encoded by this gene is inefficient in ethanol oxidation, but is the most active as a retinol dehydrogenase; thus it may participate in the synthesis of retinoic acid, a hormone important for cellular differentiation. The expression of this gene is much more abundant in stomach than liver, thus differing from the other known gene family members.

## Images



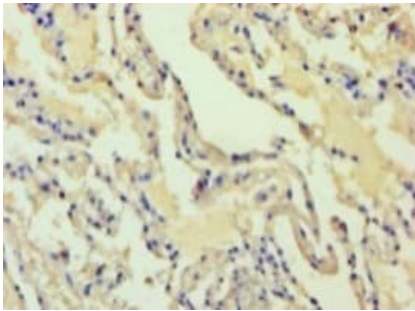
Western blot - Anti-ADH7 antibody (ab236767)

Anti-ADH7 antibody (ab236767) at 1/1000 dilution + Mouse liver tissue lysate

**Secondary**

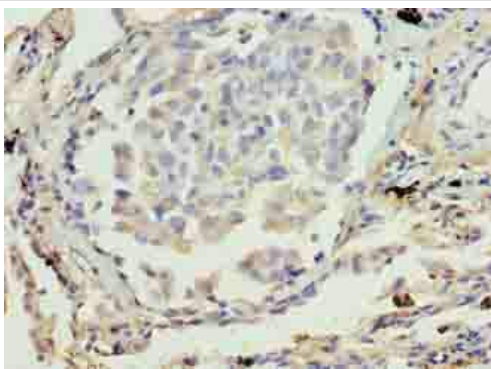
Goat polyclonal to rabbit IgG at 1/10000 dilution

**Predicted band size:** 41 kDa



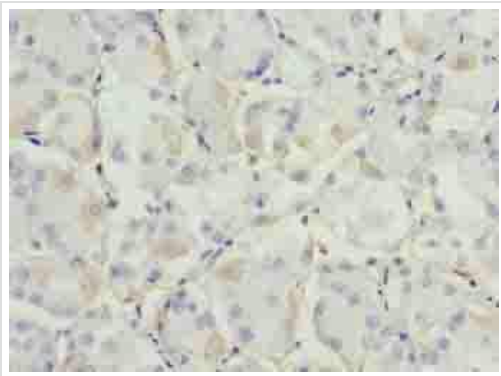
Immunohistochemistry (Formalin/PFA-fixed paraffin-embedded sections) - Anti-ADH7 antibody (ab236767)

Paraffin-embedded human lung tissue stained for ADH7 with ab236767 at 1/100 dilution in immunohistochemical analysis.



Immunohistochemistry (Formalin/PFA-fixed paraffin-embedded sections) - Anti-ADH7 antibody (ab236767)

Paraffin-embedded human lung cancer tissue stained for ADH7 with ab236767 at 1/100 dilution in immunohistochemical analysis.



Paraffin-embedded human gastric cancer tissue stained for ADH7 with ab236767 at 1/100 dilution in immunohistochemical analysis.

Immunohistochemistry (Formalin/PFA-fixed paraffin-embedded sections) - Anti-ADH7 antibody (ab236767)

**Please note:** All products are "FOR RESEARCH USE ONLY. NOT FOR USE IN DIAGNOSTIC PROCEDURES"

### **Our Abpromise to you: Quality guaranteed and expert technical support**

---

- Replacement or refund for products not performing as stated on the datasheet
- Valid for 12 months from date of delivery
- Response to your inquiry within 24 hours
- We provide support in Chinese, English, French, German, Japanese and Spanish
- Extensive multi-media technical resources to help you
- We investigate all quality concerns to ensure our products perform to the highest standards

If the product does not perform as described on this datasheet, we will offer a refund or replacement. For full details of the Abpromise, please visit <https://www.abcam.com/abpromise> or contact our technical team.

### **Terms and conditions**

---

- Guarantee only valid for products bought direct from Abcam or one of our authorized distributors