

## Product datasheet

# Anti-ADRM1/ARM-1 antibody [EPR11450(B)] ab157218

Recombinant **RabMAb**

[2 References](#) [4 Images](#)

### Overview

|                            |   |
|----------------------------|---|
| <b>Product name</b>        | Anti-ADRM1/ARM-1 antibody [EPR11450(B)]   |
| <b>Description</b>         | Rabbit monoclonal [EPR11450(B)] to ADRM1/ARM-1  |
| <b>Host species</b>        | Rabbit  |
| <b>Tested applications</b> | <b>Suitable for:</b> WB, IHC-P, ICC/IF, Flow Cyt<br><b>Unsuitable for:</b> IP   |
| <b>Species reactivity</b>  | <b>Reacts with:</b> Mouse, Human  |
| <b>Immunogen</b>           | Synthetic peptide corresponding to Human ADRM1/ARM-1 aa 350-450.  |
| <b>Positive control</b>    | Raji, HeLa, Raw264.7 and NIH 3T3 cell lysates; Human testis tissue, Human thyroid gland carcinoma tissue; HeLa cells.                             |
| <b>General notes</b>       | Rat: We have preliminary internal testing data to indicate this antibody may not react with this species. Please contact us for more information. |

This product was previously labelled as ADRM1

Our RabMAb<sup>®</sup> technology is a patented hybridoma-based technology for making rabbit monoclonal antibodies. For details on our patents, please refer to [RabMAb<sup>®</sup> patents](#).

This product is a [recombinant rabbit monoclonal antibody](#).

### Properties

|                             |   |
|-----------------------------|---|
| <b>Form</b>                 | Liquid  |
| <b>Storage instructions</b> | Shipped at 4°C. Upon delivery aliquot and store at -20°C. Avoid freeze / thaw cycles.                             |
| <b>Storage buffer</b>       | Preservative: 0.01% Sodium azide<br>Constituents: 9% PBS, 40% Glycerol, 0.05% BSA, 50% Tissue culture supernatant |
| <b>Purity</b>               | Tissue culture supernatant  |
| <b>Clonality</b>            | Monoclonal  |
| <b>Clone number</b>         | EPR11450(B)   |
| <b>Isotype</b>              | IgG   |

## Applications

Our [Abpromise guarantee](#) covers the use of **ab157218** in the following tested applications.

The application notes include recommended starting dilutions; optimal dilutions/concentrations should be determined by the end user.

| Application | Abreviews | Notes  |
|-------------|-----------|--|
| WB          |           | 1/1000 - 1/10000. Predicted molecular weight: 42 kDa.  |
| IHC-P       |           | 1/50 - 1/100. Perform heat mediated antigen retrieval with citrate buffer pH 6 before commencing with IHC staining protocol.     |
| ICC/IF      |           | 1/100 - 1/250.   |
| Flow Cyt    |           | 1/10 - 1/100.<br><a href="#">ab172730</a> - Rabbit monoclonal IgG, is suitable for use as an isotype control with this antibody. |

**Application notes** Is unsuitable for IP.

## Target

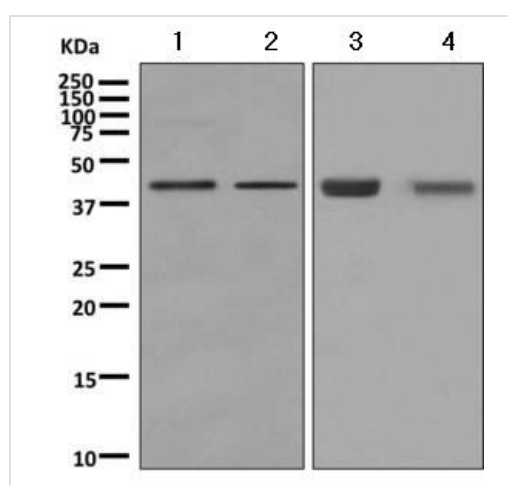
**Function** Functions as a proteasomal ubiquitin receptor. Recruits the deubiquitinating enzyme UCHL5 at the 26S proteasome and promotes its activity.

**Sequence similarities** Belongs to the ADRM1 family.  
Contains 1 PH domain.

**Domain** The PH domain mediates interactions with PSMD1 and ubiquitin. Preferential binding to the proximal subunit of K48-linked diubiquitin allows UCHL5 access to the distal subunit.

**Cellular localization** Cytoplasm. Nucleus.

## Images



**All lanes** : Anti-ADRM1/ARM-1 antibody [EPR11450(B)]  
(ab157218) at 1/1000 dilution

**Lane 1** : Raji cell lysate

**Lane 2** : HeLa cell lysate

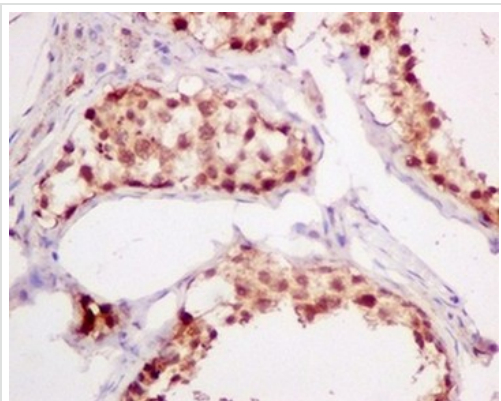
**Lane 3** : Raw264.7 cell lysate

**Lane 4** : NIH 3T3 cell lysate

Lysates/proteins at 10 µg per lane.

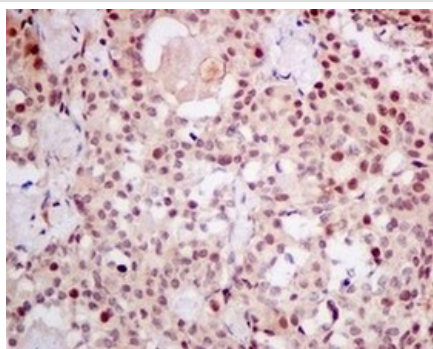
**Predicted band size:** 42 kDa

Western blot - Anti-ADRM1/ARM-1 antibody  
[EPR11450(B)] (ab157218)



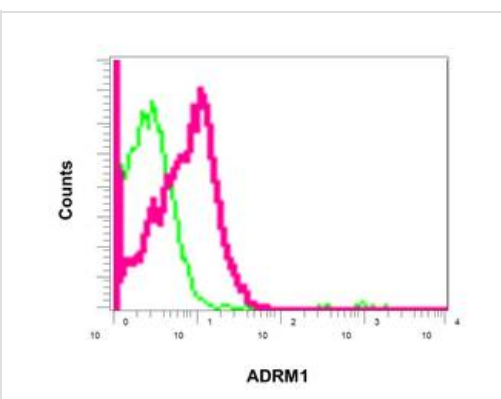
Immunohistochemical analysis of paraffin embedded Human testis tissue labeling ADRM1/ARM-1 with ab157218 at 1/50.

Immunohistochemistry (Formalin/PFA-fixed paraffin-embedded sections) - Anti-ADRM1/ARM-1 antibody [EPR11450(B)] (ab157218)



Immunohistochemical analysis of paraffin embedded Human thyroid gland carcinoma tissue labeling ADRM1/ARM-1 with ab157218 at 1/50.

Immunohistochemistry (Formalin/PFA-fixed paraffin-embedded sections) - Anti-ADRM1/ARM-1 antibody [EPR11450(B)] (ab157218)



Flow cytometric analysis of permeabilized HeLa cells using ab157218 at 1/10 (red) or a rabbit IgG negative (green).

Flow Cytometry - Anti-ADRM1/ARM-1 antibody [EPR11450(B)] (ab157218)

**Please note:** All products are "FOR RESEARCH USE ONLY. NOT FOR USE IN DIAGNOSTIC PROCEDURES"

## **Our Abpromise to you: Quality guaranteed and expert technical support**

---

- Replacement or refund for products not performing as stated on the datasheet
- Valid for 12 months from date of delivery
- Response to your inquiry within 24 hours
  
- We provide support in Chinese, English, French, German, Japanese and Spanish
- Extensive multi-media technical resources to help you
- We investigate all quality concerns to ensure our products perform to the highest standards

If the product does not perform as described on this datasheet, we will offer a refund or replacement. For full details of the Abpromise, please visit <https://www.abcam.com/abpromise> or contact our technical team.

## **Terms and conditions**

---

- Guarantee only valid for products bought direct from Abcam or one of our authorized distributors