




## Product datasheet

# Anti-AFF2 antibody ab243387

1 Image

### Overview

|                            |   |
|----------------------------|---|
| <b>Product name</b>        | Anti-AFF2 antibody  |
| <b>Description</b>         | Rabbit polyclonal to AFF2   |
| <b>Host species</b>        | Rabbit  |
| <b>Tested applications</b> | <b>Suitable for:</b> IHC-P  |
| <b>Species reactivity</b>  | <b>Reacts with:</b> Human<br><b>Predicted to work with:</b> Chimpanzee   |
| <b>Immunogen</b>           | Recombinant fragment corresponding to Human AFF2 aa 715-855.<br>Sequence:<br>SSTSDSNTDQEETLQIKVLPPCIISGGNTAKSKEICGASLTL<br>STLMSSSG<br>SNNNLSISNEEPTFSPIPVMQTEILSPLRDHENLKNLWVKID<br>LDLLSRVP<br>GHSSLHAAPAKPDHKETATKPKRQTAVTAVEKPAPKGKR<br>KH<br><br>Database link: <a href="#">P51816</a><br> <a href="#">Run BLAST with</a>  <a href="#">Run BLAST with</a>  |
| <b>Positive control</b>    | IHC-P: Human hippocampus tissue.  |
| <b>General notes</b>       | <p>Reproducibility is key to advancing scientific discovery and accelerating scientists' next breakthrough.</p> <p>Abcam is leading the way with our range of recombinant antibodies, knockout-validated antibodies and knockout cell lines, all of which support improved reproducibility.</p> <p>We are also planning to innovate the way in which we present recommended applications and species on our product datasheets, so that only applications &amp; species that have been tested in our own labs, our suppliers or by selected trusted collaborators are covered by our Abpromise™ guarantee.</p> <p>In preparation for this, we have started to update the applications &amp; species that this product is Abpromise guaranteed for.</p> <p>We are also updating the applications &amp; species that this product has been “predicted to work with,” however this information is not covered by our Abpromise guarantee.</p> <p>Applications &amp; species from publications and Abreviews that have not been tested in our own labs or in those of our suppliers are not covered by the Abpromise guarantee.</p> |

Please check that this product meets your needs before purchasing. If you have any questions, special requirements or concerns, please send us an inquiry and/or contact our Support team ahead of purchase. Recommended alternatives for this product can be found below, as well as customer reviews and Q&As.

## Properties

---

|                             |   |
|-----------------------------|---|
| <b>Form</b>                 | Liquid  |
| <b>Storage instructions</b> | Shipped at 4°C. Store at +4°C short term (1-2 weeks). Upon delivery aliquot. Store at -20°C long term. Avoid freeze / thaw cycle. |
| <b>Storage buffer</b>       | pH: 7.20<br>Preservative: 0.02% Sodium azide<br>Constituents: 40% Glycerol (glycerin, glycerine), PBS                             |
| <b>Purity</b>               | Immunogen affinity purified   |
| <b>Clonality</b>            | Polyclonal  |
| <b>Isotype</b>              | IgG   |

## Applications

---

Our [Abpromise guarantee](#) covers the use of **ab243387** in the following tested applications.

The application notes include recommended starting dilutions; optimal dilutions/concentrations should be determined by the end user.

| Application | Abreviews | Notes   |
|-------------|-----------|---|
| IHC-P       |           | 1/20 - 1/50. Perform heat mediated antigen retrieval with citrate buffer pH 6 before commencing with IHC staining protocol. |

---

## Target

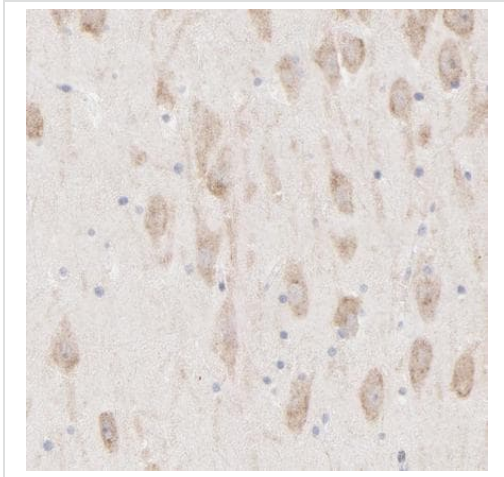
---

|                               |  |
|-------------------------------|--|
| <b>Function</b>               | RNA-binding protein. Might be involved in alternative splicing regulation through an interaction with G-quartet RNA structure. |
| <b>Tissue specificity</b>     | Brain (most abundant in hippocampus and amygdala), placenta and lung.  |
| <b>Involvement in disease</b> | Mental retardation, X-linked, associated with fragile site FRAXE   |
| <b>Sequence similarities</b>  | Belongs to the AF4 family.   |
| <b>Cellular localization</b>  | Nucleus speckle. When splicing is inhibited, accumulates in enlarged speckles.   |

---

## Images

---



Formalin-fixed, paraffin-embedded human hippocampus tissue stained for AFF2 with ab243387 at 1/20 dilution in immunohistochemical analysis.

Immunohistochemistry (Formalin/PFA-fixed paraffin-embedded sections) - Anti-AFF2 antibody (ab243387)

**Please note:** All products are "FOR RESEARCH USE ONLY. NOT FOR USE IN DIAGNOSTIC PROCEDURES"

### **Our Abpromise to you: Quality guaranteed and expert technical support**

---

- Replacement or refund for products not performing as stated on the datasheet
- Valid for 12 months from date of delivery
- Response to your inquiry within 24 hours
- We provide support in Chinese, English, French, German, Japanese and Spanish
- Extensive multi-media technical resources to help you
- We investigate all quality concerns to ensure our products perform to the highest standards

If the product does not perform as described on this datasheet, we will offer a refund or replacement. For full details of the Abpromise, please visit <https://www.abcam.com/abpromise> or contact our technical team.

### **Terms and conditions**

---

- Guarantee only valid for products bought direct from Abcam or one of our authorized distributors