


Product datasheet

Anti-AHA1 antibody [25F2.D10] ab136882

1 Image

Overview

<b>Product name</b>	Anti-AHA1 antibody [25F2.D10]
<b>Description</b>	Rat monoclonal [25F2.D10] to AHA1
<b>Host species</b>	Rat
<b>Tested applications</b>	<b>Suitable for:</b> WB, IP, ELISA, IHC-P, ICC, ICC/IF
<b>Species reactivity</b>	<b>Reacts with:</b> Human <b>Predicted to work with:</b> Mouse, Rat 
<b>Immunogen</b>	Recombinant full length Aha1
<b>Positive control</b>	Human brain cortex tissue (neurons).

Properties

<b>Form</b>	Liquid
<b>Storage instructions</b>	Shipped at 4°C. Store at +4°C short term (1-2 weeks). Upon delivery aliquot. Store at -20°C long term.
<b>Storage buffer</b>	pH: 7.20 Constituents: 0.27% Potassium phosphate, 0.88% Sodium chloride
<b>Purity</b>	Protein G purified
<b>Clonality</b>	Monoclonal
<b>Clone number</b>	25F2.D10
<b>Isotype</b>	IgG2a
<b>Light chain type</b>	kappa

Applications

Our [Abpromise guarantee](#) covers the use of **ab136882** in the following tested applications.

The application notes include recommended starting dilutions; optimal dilutions/concentrations should be determined by the end user.

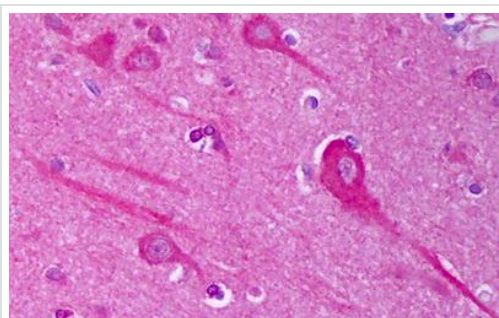
Application	Abreviews	Notes
WB		Use a concentration of 1 µg/ml. Predicted molecular weight: 38 kDa.

Application	Abreviews	Notes
IP		Use at an assay dependent dilution.
ELISA		Use at an assay dependent dilution.
IHC-P		Use a concentration of 5 µg/ml. Perform heat mediated antigen retrieval with citrate buffer pH 6 before commencing with IHC staining protocol.
ICC		Use at an assay dependent dilution.
ICC/IF		Use at an assay dependent dilution.

## Target

<b>Function</b>	Cochaperone that stimulates HSP90 ATPase activity (By similarity). May affect a step in the endoplasmic reticulum to Golgi trafficking.
<b>Tissue specificity</b>	Expressed in numerous tissues, including brain, heart, skeletal muscle and kidney and, at lower levels, liver and placenta.
<b>Sequence similarities</b>	Belongs to the AHA1 family.
<b>Cellular localization</b>	Cytoplasm > cytosol. Endoplasmic reticulum. May transiently interact with the endoplasmic reticulum.

## Images



Immuno-electrophoresis - Anti-AHA1 antibody  
[25F2.D10] (ab136882)

Immunohistochemical analysis of formalin-fixed, paraffin-embedded Human brain cortex (neurons) tissue labelling AHA1 with ab136882 at 5 µg/ml.

**Please note:** All products are "FOR RESEARCH USE ONLY. NOT FOR USE IN DIAGNOSTIC PROCEDURES"

## Our Abpromise to you: Quality guaranteed and expert technical support

- Replacement or refund for products not performing as stated on the datasheet
- Valid for 12 months from date of delivery
- Response to your inquiry within 24 hours

- We provide support in Chinese, English, French, German, Japanese and Spanish
- Extensive multi-media technical resources to help you
- We investigate all quality concerns to ensure our products perform to the highest standards

If the product does not perform as described on this datasheet, we will offer a refund or replacement. For full details of the Abpromise, please visit <https://www.abcam.com/abpromise> or contact our technical team.

### **Terms and conditions**

---

- Guarantee only valid for products bought direct from Abcam or one of our authorized distributors