


Product datasheet

Anti-AHA1 antibody ab228492

4 Images

Overview

---

<b>Product name</b>	Anti-AHA1 antibody
<b>Description</b>	Rabbit polyclonal to AHA1
<b>Host species</b>	Rabbit
<b>Tested applications</b>	<b>Suitable for:</b> WB, IHC-P, ICC/IF
<b>Species reactivity</b>	<b>Reacts with:</b> Human <b>Predicted to work with:</b> Mouse, Rat, Cow, Rhesus monkey 
<b>Immunogen</b>	Recombinant fragment within Human AHA1 (internal sequence). The exact sequence is proprietary. Database link: <a href="#">O95433</a>
<b>Positive control</b>	WB: HeLa cell extract; Jurkat whole cell lysate. IHC-P: A549 xenograft tissue. ICC/IF: A431 cells.
<b>General notes</b>	<p>Reproducibility is key to advancing scientific discovery and accelerating scientists' next breakthrough.</p> <p>Abcam is leading the way with our range of recombinant antibodies, knockout-validated antibodies and knockout cell lines, all of which support improved reproducibility.</p> <p>We are also planning to innovate the way in which we present recommended applications and species on our product datasheets, so that only applications &amp; species that have been tested in our own labs, our suppliers or by selected trusted collaborators are covered by our Abpromise™ guarantee.</p> <p>In preparation for this, we have started to update the applications &amp; species that this product is Abpromise guaranteed for.</p> <p>We are also updating the applications &amp; species that this product has been “predicted to work with,” however this information is not covered by our Abpromise guarantee.</p> <p>Applications &amp; species from publications and Abreviews that have not been tested in our own labs or in those of our suppliers are not covered by the Abpromise guarantee.</p> <p>Please check that this product meets your needs before purchasing. If you have any questions, special requirements or concerns, please send us an inquiry and/or contact our Support team ahead of purchase. Recommended alternatives for this product can be found below, as well as customer reviews and Q&amp;As.</p>

Properties

---

<b>Form</b>	Liquid
<b>Storage instructions</b>	Shipped at 4°C. Store at +4°C short term (1-2 weeks). Upon delivery aliquot. Store at -20°C long term. Avoid freeze / thaw cycle.
<b>Storage buffer</b>	pH: 7.00 Preservative: 0.01% Thimerosal (merthiolate) Constituents: 59.99% PBS, 40% Glycerol (glycerin, glycerine)
<b>Purity</b>	Immunogen affinity purified
<b>Clonality</b>	Polyclonal
<b>Isotype</b>	IgG

## Applications

Our [Abpromise guarantee](#) covers the use of **ab228492** in the following tested applications.

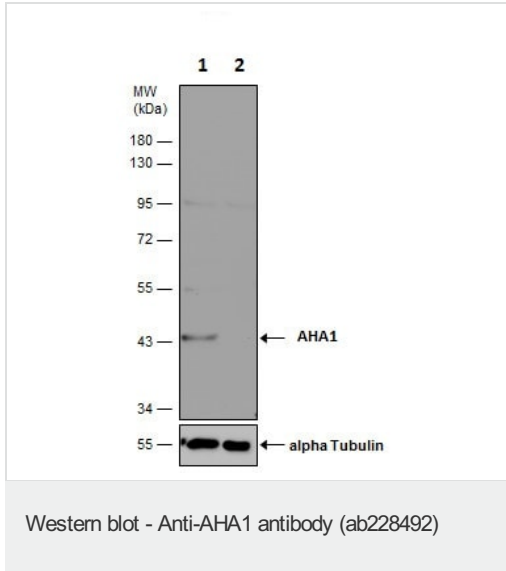
The application notes include recommended starting dilutions; optimal dilutions/concentrations should be determined by the end user.

Application	Abreviews	Notes
WB		1/500 - 1/30000. Predicted molecular weight: 38 kDa.
IHC-P		1/100 - 1/1000.
ICC/IF		1/100 - 1/1000.

## Target

<b>Function</b>	Cochaperone that stimulates HSP90 ATPase activity (By similarity). May affect a step in the endoplasmic reticulum to Golgi trafficking.
<b>Tissue specificity</b>	Expressed in numerous tissues, including brain, heart, skeletal muscle and kidney and, at lower levels, liver and placenta.
<b>Sequence similarities</b>	Belongs to the AHA1 family.
<b>Cellular localization</b>	Cytoplasm > cytosol. Endoplasmic reticulum. May transiently interact with the endoplasmic reticulum.

## Images



**All lanes :** Anti-AHA1 antibody (ab228492) at 1/30000 dilution

**Lane 1 :** Wild-type HeLa (human epithelial cell line from cervix adenocarcinoma) cell extract

**Lane 2 :** AHA1 knockout HeLa cell extract

Lysates/proteins at 30 µg per lane.

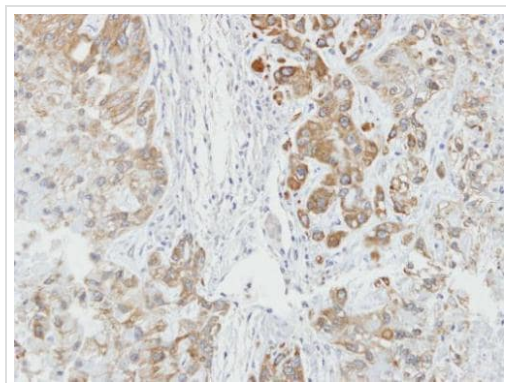
### Secondary

**All lanes :** HRP-conjugated anti-rabbit IgG

Developed using the ECL technique.

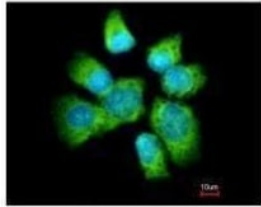
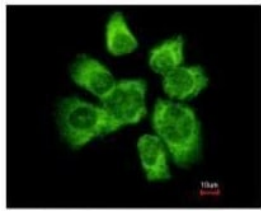
**Predicted band size:** 38 kDa

10% SDS-PAGE



Paraffin-embedded A549 xenograft tissue stained for AHA1 with ab228492 at 1:100 dilution in immunohistochemical analysis.

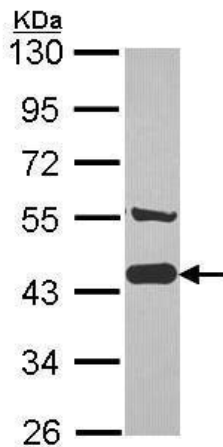
Immunohistochemistry (Formalin/PFA-fixed paraffin-embedded sections) - Anti-AHA1 antibody (ab228492)



Methanol-fixed A431 (human epidermoid carcinoma cell line) cells stained for AHA1 (green) using ab228492 at 1:500 dilution in ICC/IF.

Blue: Hoechst 33342 staining.

Immunocytochemistry/ Immunofluorescence - Anti-AHA1 antibody (ab228492)



Anti-AHA1 antibody (ab228492) at 1/1000 dilution + Jurkat (human T cell leukemia cell line from peripheral blood) whole cell lysate at 30  $\mu$ g

Developed using the ECL technique.

**Predicted band size:** 38 kDa

10% SDS-PAGE

Western blot - Anti-AHA1 antibody (ab228492)

**Please note:** All products are "FOR RESEARCH USE ONLY. NOT FOR USE IN DIAGNOSTIC PROCEDURES"

### Our Abpromise to you: Quality guaranteed and expert technical support

- Replacement or refund for products not performing as stated on the datasheet
- Valid for 12 months from date of delivery
- Response to your inquiry within 24 hours
- We provide support in Chinese, English, French, German, Japanese and Spanish
- Extensive multi-media technical resources to help you
- We investigate all quality concerns to ensure our products perform to the highest standards

If the product does not perform as described on this datasheet, we will offer a refund or replacement. For full details of the Abpromise,

please visit <https://www.abcam.com/abpromise> or contact our technical team.

## **Terms and conditions**

---

- Guarantee only valid for products bought direct from Abcam or one of our authorized distributors