


Product datasheet

Anti-Alas1 antibody - Mitochondrial Marker ab84962

5 References 1 Image

Overview

Product name	Anti-Alas1 antibody - Mitochondrial Marker
Description	Rabbit polyclonal to Alas1 - Mitochondrial Marker
Host species	Rabbit
Tested applications	Suitable for: WB
Species reactivity	Reacts with: Human Predicted to work with: Rat, Sheep, Rabbit, Horse, Chicken, Guinea pig, Cow, Cat, Dog, Zebrafish 
Immunogen	Synthetic peptide within residues: VAETSAGPSV VSVKTDGGDP SGLLKNFQDI MQQRPERVS HLLQDNLPKS, corresponding to N terminal amino acids 144-193 of Human Alas1 (NP_000679). Run BLAST with ExPASy Run BLAST with NCBI
Positive control	Human fetal lung lysate.

Properties

Form	Liquid
Storage instructions	Shipped at 4°C. Store at +4°C short term (1-2 weeks). Upon delivery aliquot. Store at -20°C long term. Avoid freeze / thaw cycle.
Storage buffer	pH: 7.2 Preservative: 0.09% Sodium azide Constituents: 2% Sucrose, PBS
Purity	Immunogen affinity purified
Clonality	Polyclonal
Isotype	IgG

Applications

Our [Abpromise guarantee](#) covers the use of **ab84962** in the following tested applications.

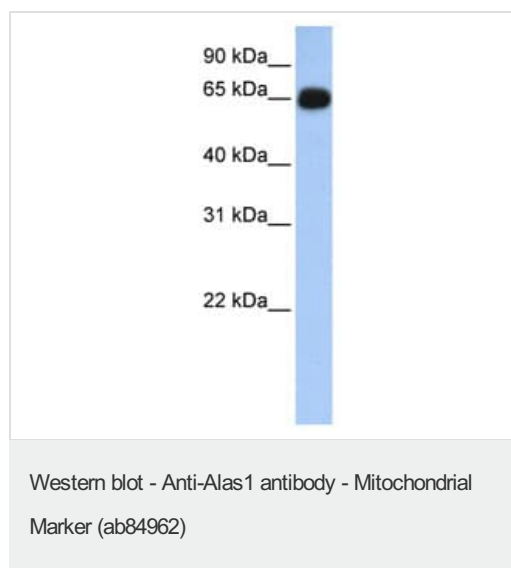
The application notes include recommended starting dilutions; optimal dilutions/concentrations should be determined by the end user.

Application	Abreviews	Notes
WB		Use a concentration of 1 µg/ml. Detects a band of approximately 65 kDa (predicted molecular weight: 71 kDa). Good results were obtained when blocked with 5% non-fat dry milk in 0.05% PBS-T.

Target

Pathway	Porphyrin metabolism; protoporphyrin-IX biosynthesis; 5-aminolevulinate from glycine: step 1/1.
Sequence similarities	Belongs to the class-II pyridoxal-phosphate-dependent aminotransferase family.
Cellular localization	Mitochondrion matrix.

Images



Anti-Alas1 antibody - Mitochondrial Marker (ab84962) at 1 µg/ml (5% skim milk / PBS buffer) + Human fetal lung lysate at 10 µg

Secondary

anti-Rabbit IgG HRP at 1/50000 dilution

Predicted band size: 71 kDa

Observed band size: 65 kDa

[why is the actual band size different from the predicted?](#)

Gel concentration: 12%

Please note: All products are "FOR RESEARCH USE ONLY. NOT FOR USE IN DIAGNOSTIC PROCEDURES"

Our Abpromise to you: Quality guaranteed and expert technical support

- Replacement or refund for products not performing as stated on the datasheet
- Valid for 12 months from date of delivery
- Response to your inquiry within 24 hours
- We provide support in Chinese, English, French, German, Japanese and Spanish
- Extensive multi-media technical resources to help you
- We investigate all quality concerns to ensure our products perform to the highest standards

If the product does not perform as described on this datasheet, we will offer a refund or replacement. For full details of the Abpromise, please visit <https://www.abcam.com/abpromise> or contact our technical team.

Terms and conditions

- Guarantee only valid for products bought direct from Abcam or one of our authorized distributors