

Product datasheet

Anti-Albumin antibody ab106582

★★★★☆ 11 Abreviews 35 References 4 Images

Overview

Product name	Anti-Albumin antibody
Description	Chicken polyclonal to Albumin
Host species	Chicken
Tested applications	Suitable for: WB, IHC-P
Species reactivity	Reacts with: Mouse, Human
Immunogen	Synthetic peptide corresponding to Human Albumin (internal sequence). The immunogen is located within amino acids 340 - 390 of Albumin. Database link: P02768
Positive control	Mouse liver lysate; Human liver tissue
General notes	<p>Antibodies should not be exposed to prolonged high temperatures.</p> <p>Reproducibility is key to advancing scientific discovery and accelerating scientists' next breakthrough.</p> <p>Abcam is leading the way with our range of recombinant antibodies, knockout-validated antibodies and knockout cell lines, all of which support improved reproducibility.</p> <p>We are also planning to innovate the way in which we present recommended applications and species on our product datasheets, so that only applications & species that have been tested in our own labs, our suppliers or by selected trusted collaborators are covered by our Abpromise™ guarantee.</p> <p>In preparation for this, we have started to update the applications & species that this product is Abpromise guaranteed for.</p> <p>We are also updating the applications & species that this product has been “predicted to work with,” however this information is not covered by our Abpromise guarantee.</p> <p>Applications & species from publications and Abreviews that have not been tested in our own labs or in those of our suppliers are not covered by the Abpromise guarantee.</p> <p>Please check that this product meets your needs before purchasing. If you have any questions, special requirements or concerns, please send us an inquiry and/or contact our Support team ahead of purchase. Recommended alternatives for this product can be found below, as well as customer reviews and Q&As.</p>

Properties

Form	Liquid
Storage instructions	Shipped at 4°C. Store at +4°C short term (1-2 weeks). Upon delivery aliquot. Store at -20°C long term. Avoid freeze / thaw cycle. Please see notes section.
Storage buffer	pH: 7.2 Preservative: 0.02% Sodium azide Constituent: PBS
Purity	Immunogen affinity purified
Clonality	Polyclonal
Isotype	IgY

Applications

Our [Abpromise guarantee](#) covers the use of **ab106582** in the following tested applications.

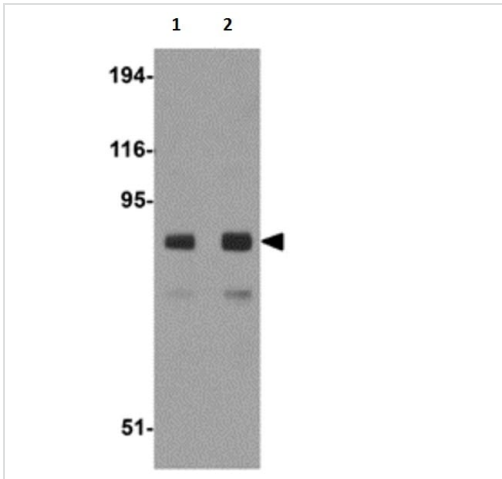
The application notes include recommended starting dilutions; optimal dilutions/concentrations should be determined by the end user.

Application	Abreviews	Notes
WB		Use a concentration of 1 - 2 µg/ml. Predicted molecular weight: 69 kDa.
IHC-P	★★★★☆	Use a concentration of 2.5 - 20 µg/ml.
IF		Use a concentration of 20 µg/ml.

Target

Function	Serum albumin, the main protein of plasma, has a good binding capacity for water, Ca(2+), Na(+), K(+), fatty acids, hormones, bilirubin and drugs. Its main function is the regulation of the colloidal osmotic pressure of blood. Major zinc transporter in plasma, typically binds about 80% of all plasma zinc.
Tissue specificity	Plasma.
Involvement in disease	Defects in ALB are a cause of familial dysalbuminemic hyperthyroxinemia (FDH) [MIM:103600]. FDH is a form of euthyroid hyperthyroxinemia that is due to increased affinity of ALB for T(4). It is the most common cause of inherited euthyroid hyperthyroxinemia in Caucasian population.
Sequence similarities	Belongs to the ALB/AFP/VDB family. Contains 3 albumin domains.
Post-translational modifications	Kenitra variant is partially O-glycosylated at Thr-620. It has two new disulfide bonds Cys-600 to Cys-602 and Cys-601 to Cys-606. Glycated in diabetic patients. Phosphorylation sites are present in the extracellular medium. Acetylated on Lys-223 by acetylsalicylic acid.
Cellular localization	Secreted.
Form	There are 2 isoforms produced by alternative splicing.

Images



Western blot - Anti-Albumin antibody (ab106582)

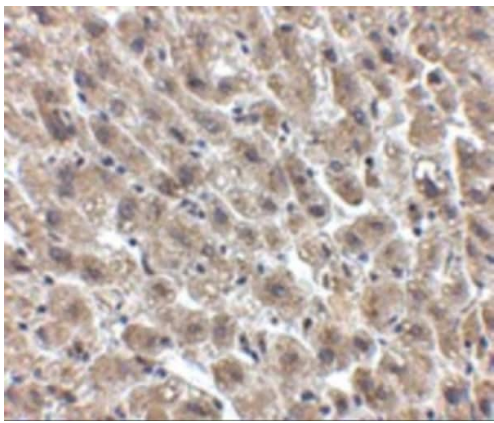
Lane 1 : Anti-Albumin antibody (ab106582) at 1 µg/ml

Lane 2 : Anti-Albumin antibody (ab106582) at 2 µg/ml

All lanes : Mouse liver tissue lysate

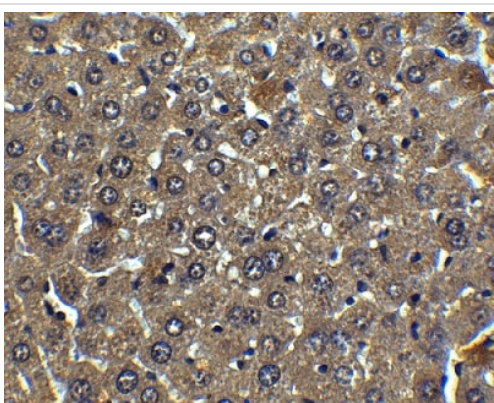
Lysates/proteins at 15 µg per lane.

Predicted band size: 69 kDa



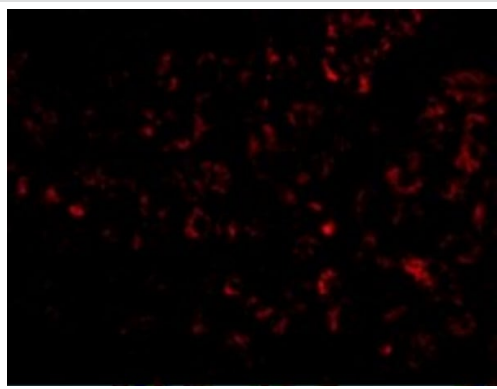
Immunohistochemistry (Formalin/PFA-fixed paraffin-embedded sections) - Anti-Albumin antibody (ab106582)

Immunohistochemical analysis of paraffin embedded Human liver tissue section labelling Albumin with ab106582 at 2.5 µg/ml.



Immunohistochemistry (Formalin/PFA-fixed paraffin-embedded sections) - Anti-Albumin antibody (ab106582)

Immunohistochemical analysis of paraffin embedded Mouse liver tissue section labelling Albumin with ab106582 at 5 µg/ml.



Immunofluorescence analysis of paraffin embedded mouse liver tissue section labelling Albumin with ab106582 at 20 µg/mL.

Immunofluorescence - Anti-Albumin antibody
(ab106582)

Please note: All products are "FOR RESEARCH USE ONLY. NOT FOR USE IN DIAGNOSTIC PROCEDURES"

Our Abpromise to you: Quality guaranteed and expert technical support

- Replacement or refund for products not performing as stated on the datasheet
- Valid for 12 months from date of delivery
- Response to your inquiry within 24 hours
- We provide support in Chinese, English, French, German, Japanese and Spanish
- Extensive multi-media technical resources to help you
- We investigate all quality concerns to ensure our products perform to the highest standards

If the product does not perform as described on this datasheet, we will offer a refund or replacement. For full details of the Abpromise, please visit <https://www.abcam.com/abpromise> or contact our technical team.

Terms and conditions

- Guarantee only valid for products bought direct from Abcam or one of our authorized distributors